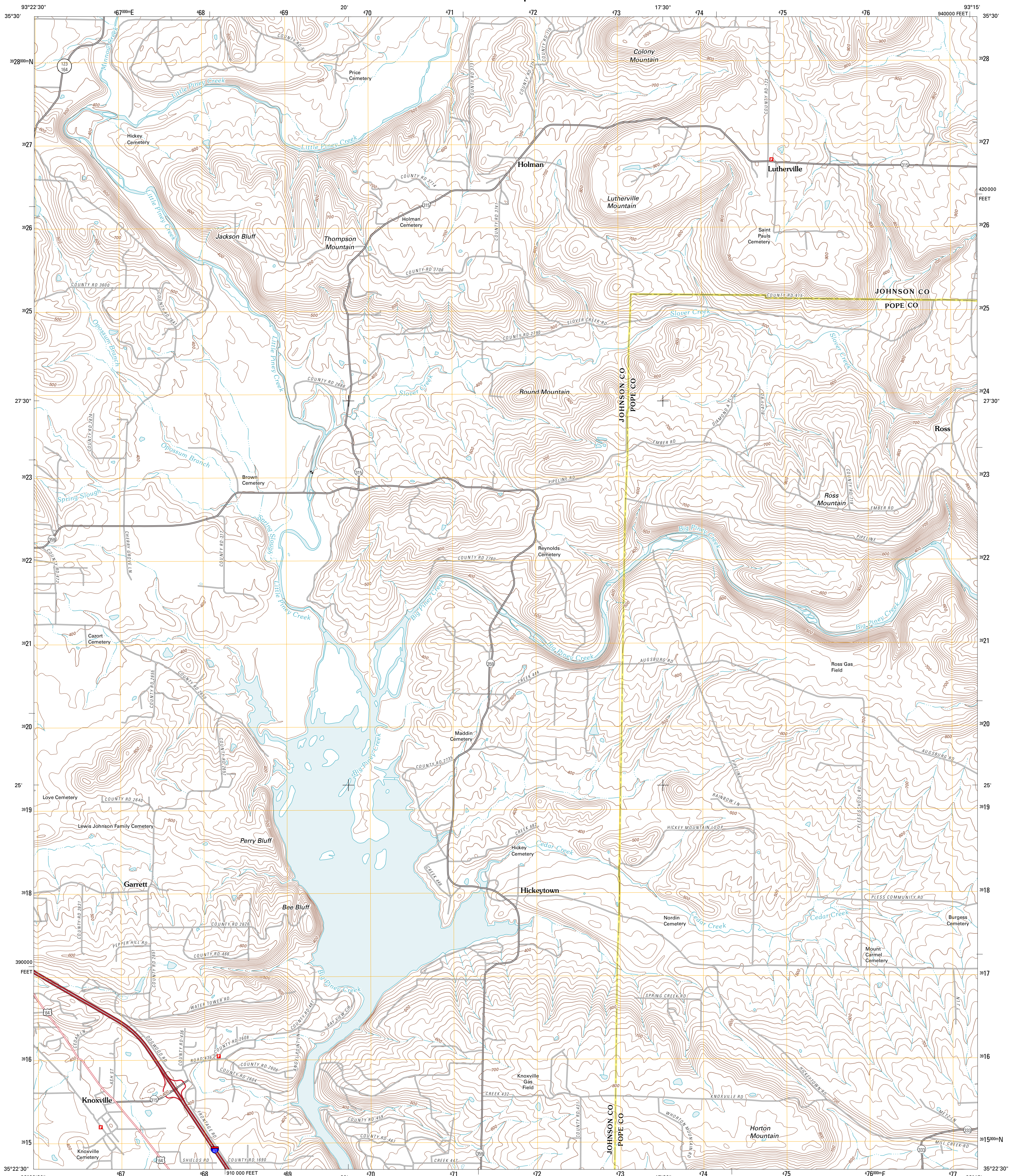




U.S. DEPARTMENT OF THE INTERIOR  
U. S. GEOLOGICAL SURVEY



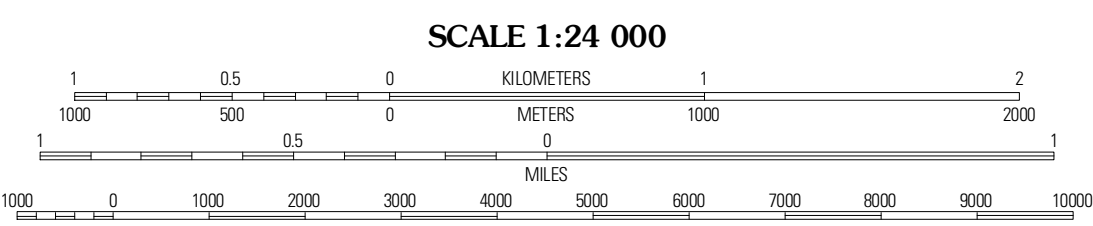
KNOXVILLE QUADRANGLE  
ARKANSAS  
7.5-MINUTE SERIES



Produced by the United States Geological Survey  
North American Datum of 1983 (NAD83)  
World Geodetic System of 1984 (WGS84). Projection and  
1 000-foot grid: Universal Transverse Mercator, Zone 15S  
10 000-foot ticks: Arkansas Coordinate System of 1983  
(north zone)

UTM GRID AND 2011 MAGNETIC NORTH  
DECLINATION AT CENTER OF SHEET

|                       |
|-----------------------|
| U.S. National Grid    |
| 100,000-m Square ID   |
| WV                    |
| Grid Zone Designation |
| 15S                   |



CONTOUR INTERVAL 20 FEET  
NORTH AMERICAN VERTICAL DATUM OF 1988

This map was produced to conform with version 0.5.10  
of the USGS US Topo Product Standard.  
A metadata file associated with this product is draft version 0.5.16



ROAD CLASSIFICATION

|                  |             |
|------------------|-------------|
| Interstate Route | State Route |
| US Route         | Local Road  |
| Ramp             | 4WD         |

QUADRANGLE LOCATION

|             |            |              |
|-------------|------------|--------------|
| Ludwig      | Hagarville | Trest        |
| Clarksville | Knoxville  | Lee Mountain |
| New Blaine  | Delaware   | Russell West |

ADJOINING 7.5 QUADRANGLES

KNOXVILLE, AR  
2011