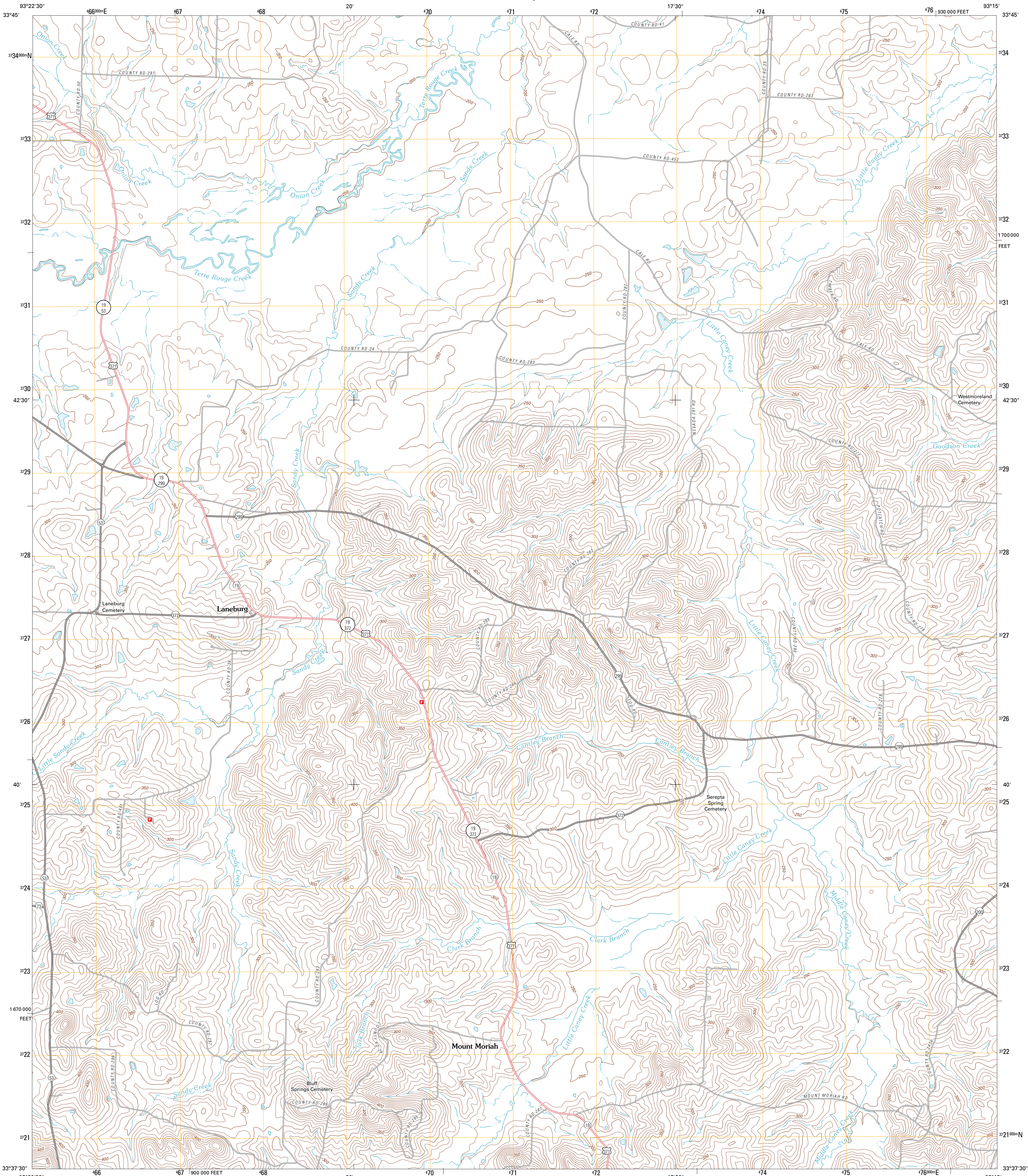




U.S. DEPARTMENT OF THE INTERIOR  
U. S. GEOLOGICAL SURVEY

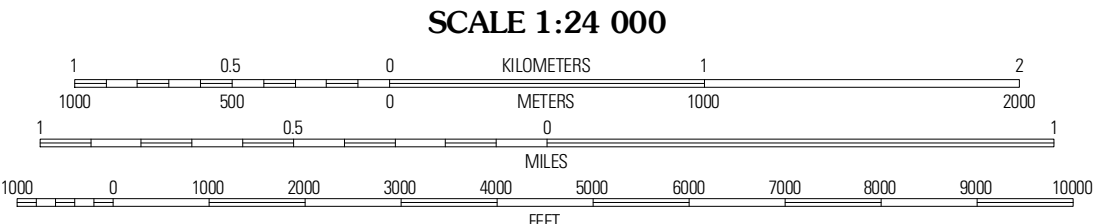
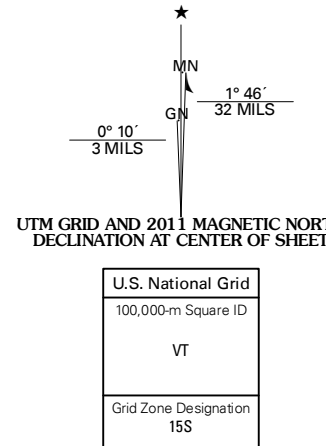


LANEBURG QUADRANGLE  
ARKANSAS-NEVADA CO.  
7.5-MINUTE SERIES



Produced by the United States Geological Survey  
North American Datum of 1983 (NAD83)  
World Geodetic System of 1984 (WGS84). Projection and  
1 000-meter grid; Universal Transverse Mercator, Zone 15S  
10 000-foot ticks: Arkansas Coordinate System of 1983  
(south zone)

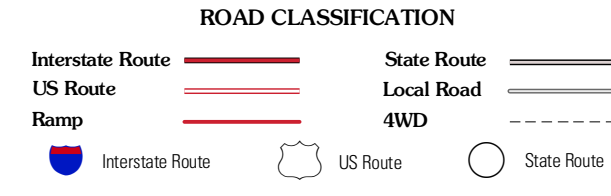
Imagery.....NAIP, September 2009  
Roads.....S2006-2010 Tele Atlas  
Names.....GNS, 2010  
Hydrography.....National Hydrography Dataset, 2009  
Contours.....National Elevation Dataset, 1999  
Boundaries.....Census, IBWC, IBC, USGS, 1972 - 2010



CONTOUR INTERVAL 10 FEET  
NORTH AMERICAN VERTICAL DATUM OF 1988  
This map was produced to conform with version 0.5.10  
of the USGS US Topo Product Standard.  
A metadata file associated with this product is draft version 0.5.16



|               |               |                |
|---------------|---------------|----------------|
| Prescott West | Prescott East | Whelen Springs |
| Emmet         | Laneburg      | Bluff City     |
| Bodcaw        | Willbottle    | Waterloo       |



LANEBURG, AR  
2011

ADJOINING 7.5 QUADRANGLES