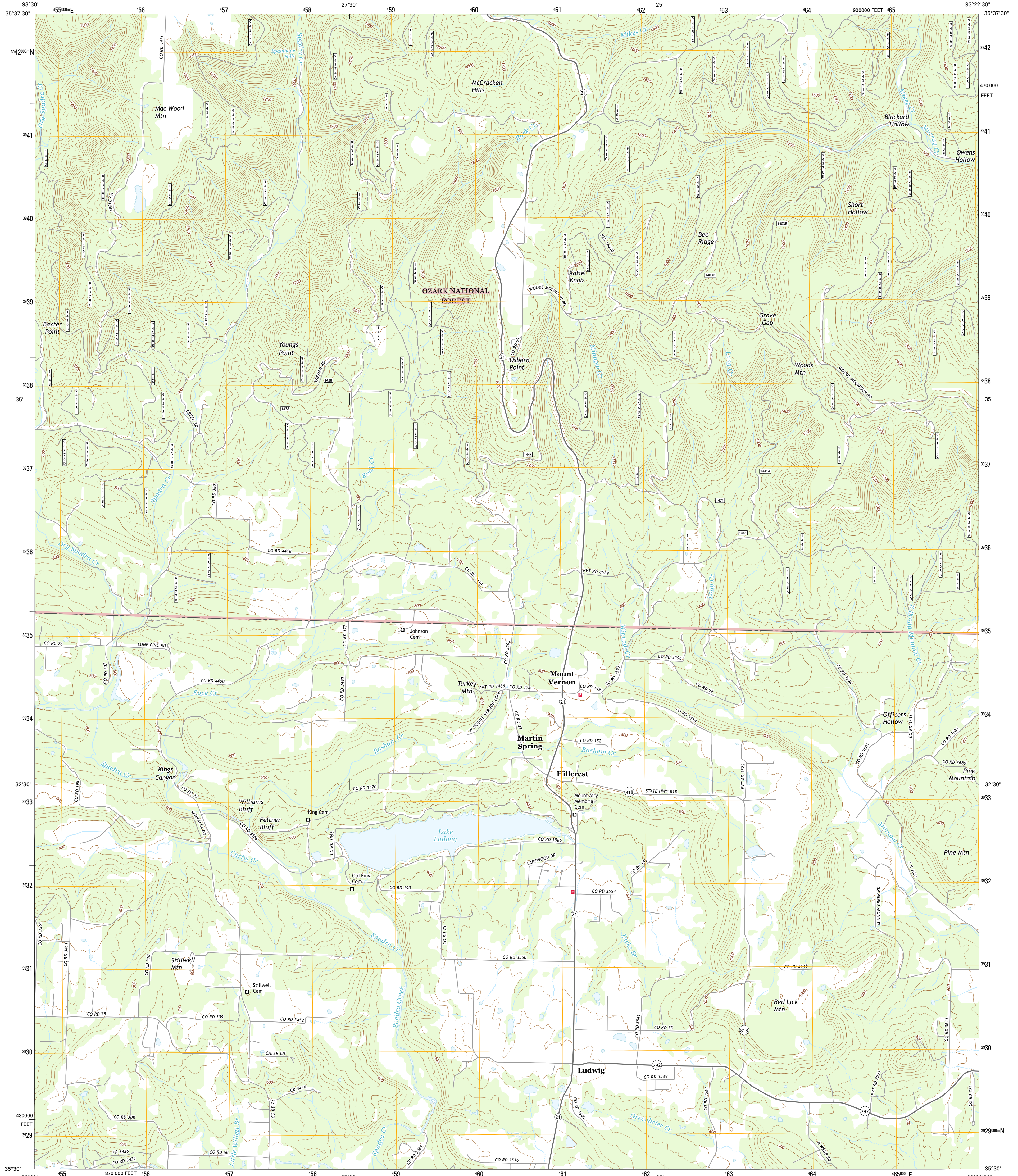




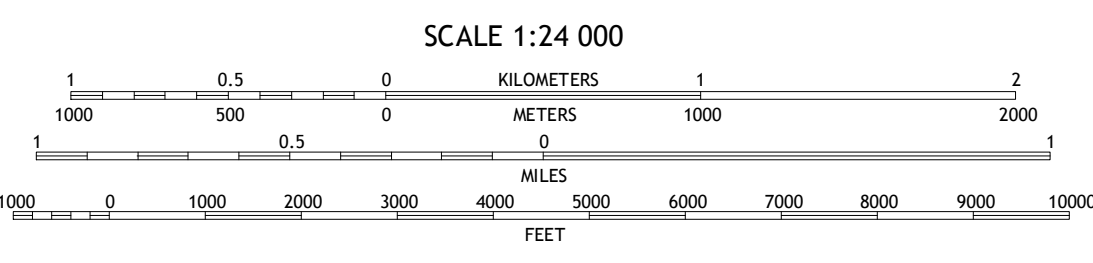
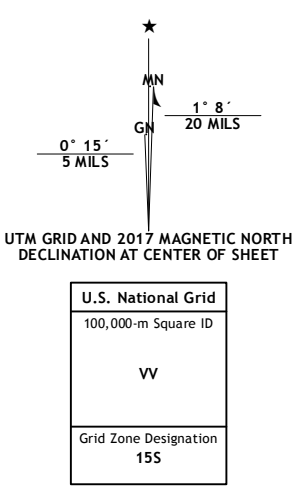
U.S. DEPARTMENT OF THE INTERIOR
U.S. GEOLOGICAL SURVEY



LUDWIG QUADRANGLE
ARKANSAS-JOHNSON CO.
7.5-MINUTE SERIES



Produced by the United States Geological Survey
 North American Datum of 1983 (NAD83)
 World Geodetic System of 1984 (WGS84), Projection and
 1 000-meter grid; Universal Transverse Mercator, Zone 15S
 10 000-foot ticks; Arkansas Coordinate System of 1983 (north
 zone)
 This map is not a legal document. Boundaries may be
 generalized for this map scale. Private lands within government
 reservations may not be shown. Obtain permission before
 entering private lands.
 Imagery: NAIP, December 2015
 U.S. Census Bureau, 2015 - 2016
 Roads within US Forest Service Lands: FSTopo Data
 with limited Forest Service updates, 2012 - 2016
 GNIS, 2016
 Hydrography: National Hydrography Dataset, 2015
 Contours: National Elevation Dataset, 2017
 Boundaries: Multiple sources; see metadata file 1972 - 2016
 Public Land Survey System: BLM, 2015
 Wetlands: FWS National Wetlands Inventory 1977 - 2014



CONTOUR INTERVAL 40 FEET
NORTH AMERICAN VERTICAL DATUM OF 1988

This map was produced to conform with the
National Geospatial Program US Topo Product Standard, 2011.
A metadata file associated with this product is draft version 0.6.19



- ROAD CLASSIFICATION**
- Expressway
 - Secondary Hwy
 - Interstate Route
 - FS Primary Route
 - Local Connector
 - Local Road
 - 4WD
 - US Route
 - FS Passenger Route
 - FS High Clearance Route
 - State Route
- Check with local Forest Service unit
for current travel conditions and restrictions.

1	2	3
4	5	6
7	8	

- 1 Oak
- 2 Ozone
- 3 Rosetta
- 4 Harmony
- 5 Hagarville
- 6 Hartman
- 7 Clarkville
- 8 Knoxville

LUDWIG, AR
2017

