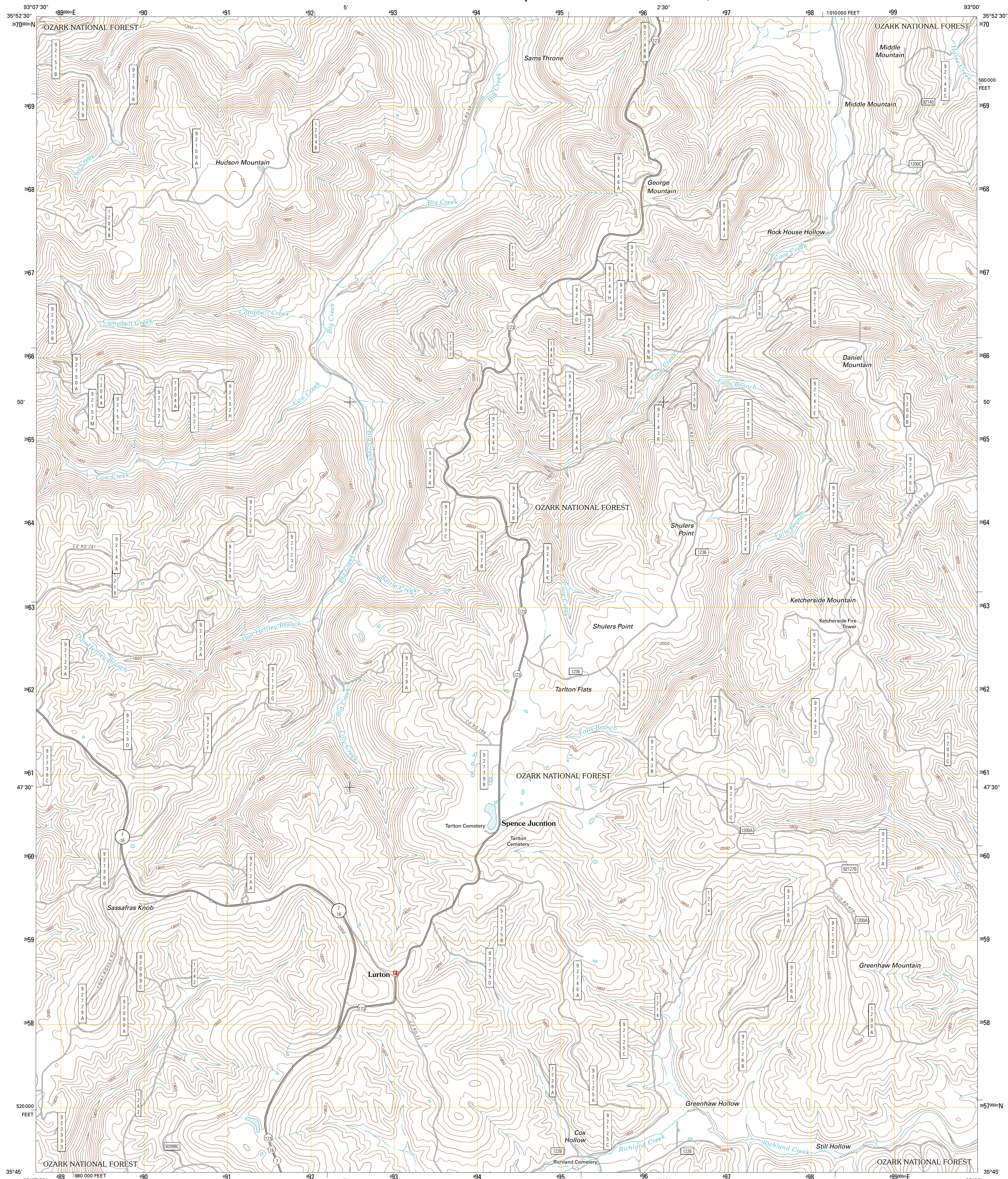




U.S. DEPARTMENT OF THE INTERIOR
U. S. GEOLOGICAL SURVEY



LURTON QUADRANGLE
ARKANSAS-NEWTON CO.
7.5-MINUTE SERIES

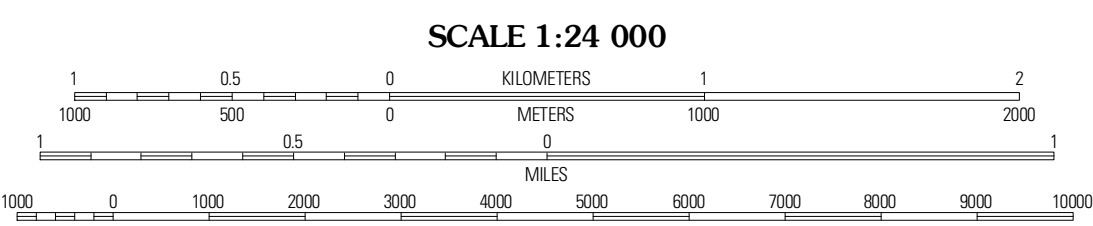


Produced by the United States Geological Survey
North American Datum of 1983 (NAD83)
World Geodetic System of 1984 (WGS84). Projection and
1 000-meter grid: Universal Transverse Mercator, Zone 15S
10 000-foot ticks: Arkansas Coordinate System of 1983
(north zone)

Imagery.....NAIP, August 2009 - September 2009
Roads.....©2006-2010 Tele Atlas
Roads within US Forest Service Lands.....FS Topo Data
with limited Forest Service updates, 2009
Names.....GNIS, 2010
Hydrography.....National Hydrography Dataset, 2009
Contours.....National Elevation Dataset, 2000
Boundaries.....Census, BWC, IBC, USGS, 1972 - 2010

UTM GRID AND 2011 MAGNETIC NORTH
DECLINATION AT CENTER OF SHEET

U.S. National Grid
100,000-m Square ID
W
Grid Zone Designation
15S



CONTOUR INTERVAL 40 FEET
NORTH AMERICAN VERTICAL DATUM OF 1988

This map was produced to conform with version 0.5.10
of the USGS US Topo Product Standard.
A metadata file associated with this product is draft version 0.5.16



QUADRANGLE LOCATION

Parthenon	Mount Jukea	Eals
Deer	Lurton	Moore
Fort Douglas	Sand Gap	Seymour

ADJOINING 7.5 QUADRANGLES

ROAD CLASSIFICATION

- Interstate Route
- US Route
- Ramp
- FS Primary Route
- State Route
- Local Road
- 4WD
- FS Passenger Route
- FS High Clearance Route

Check with local Forest Service unit
for current travel conditions and restrictions.

LURTON, AR
2011