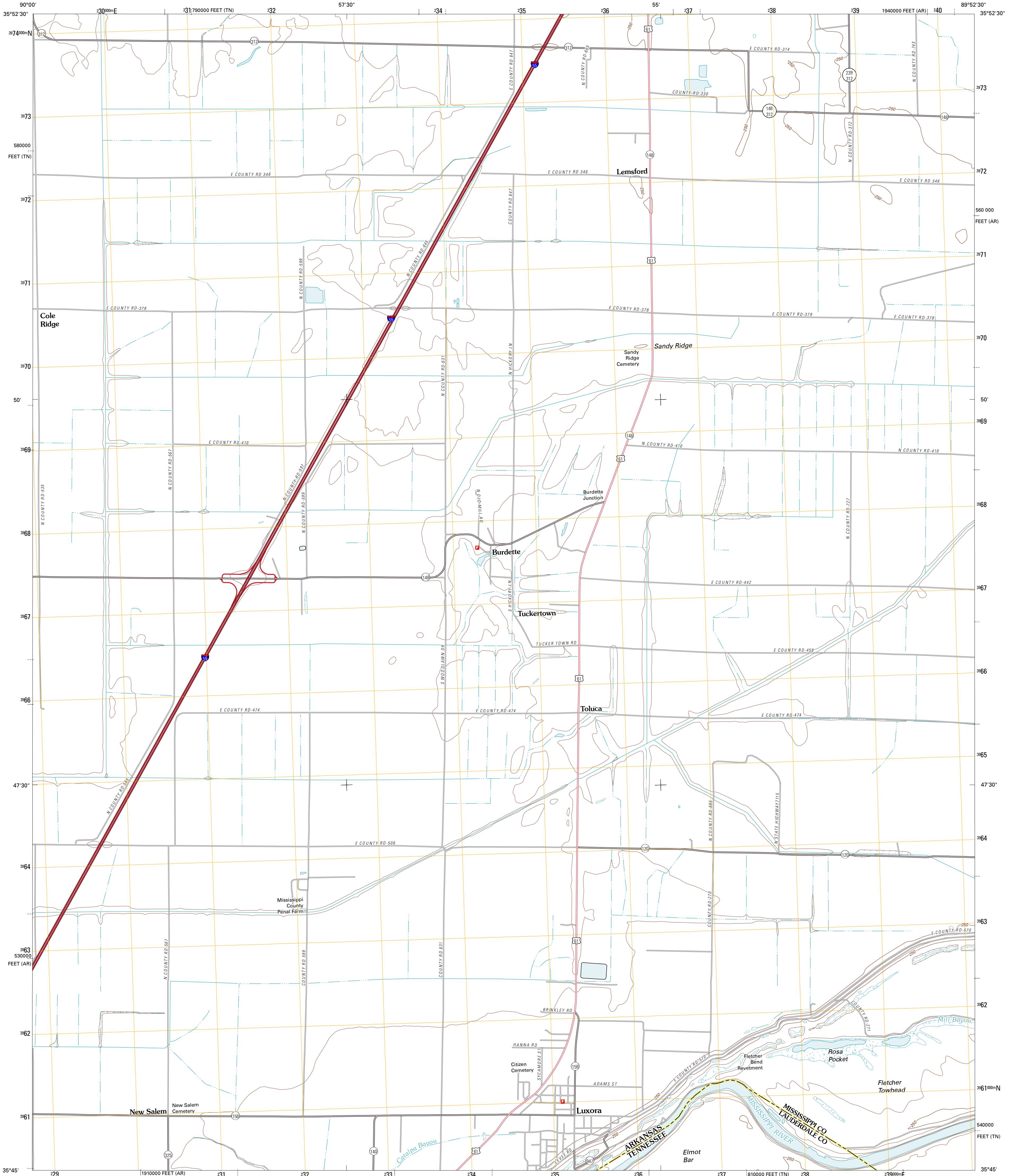




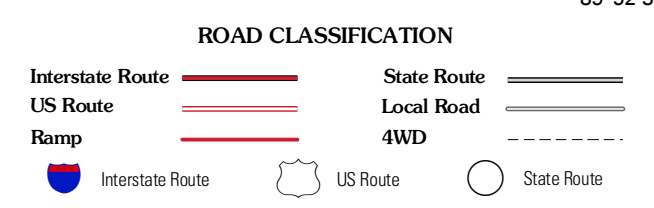
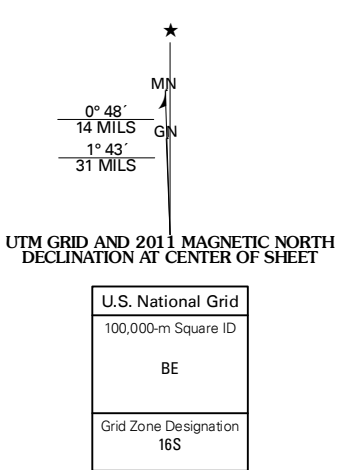
U.S. DEPARTMENT OF THE INTERIOR
U. S. GEOLOGICAL SURVEY



LUXORA QUADRANGLE
ARKANSAS-TENNESSEE
7.5-MINUTE SERIES



Produced by the United States Geological Survey
North American Datum of 1983 (NAD83)
World Geodetic System of 1984 (WGS84). Projection and
1 000-meter grid: Universal Transverse Mercator, Zone 16S
10 000-foot ticks: Arkansas Coordinate System of 1983
(north zone), Tennessee Coordinate System of 1983



Half Moon	Bytheville	Amored
Dell	Luxora	Rosa
Kaiser	Oceola	Goldust

ADJOINING 7.5' QUADRANGLES

LUXORA, AR-TN
2011