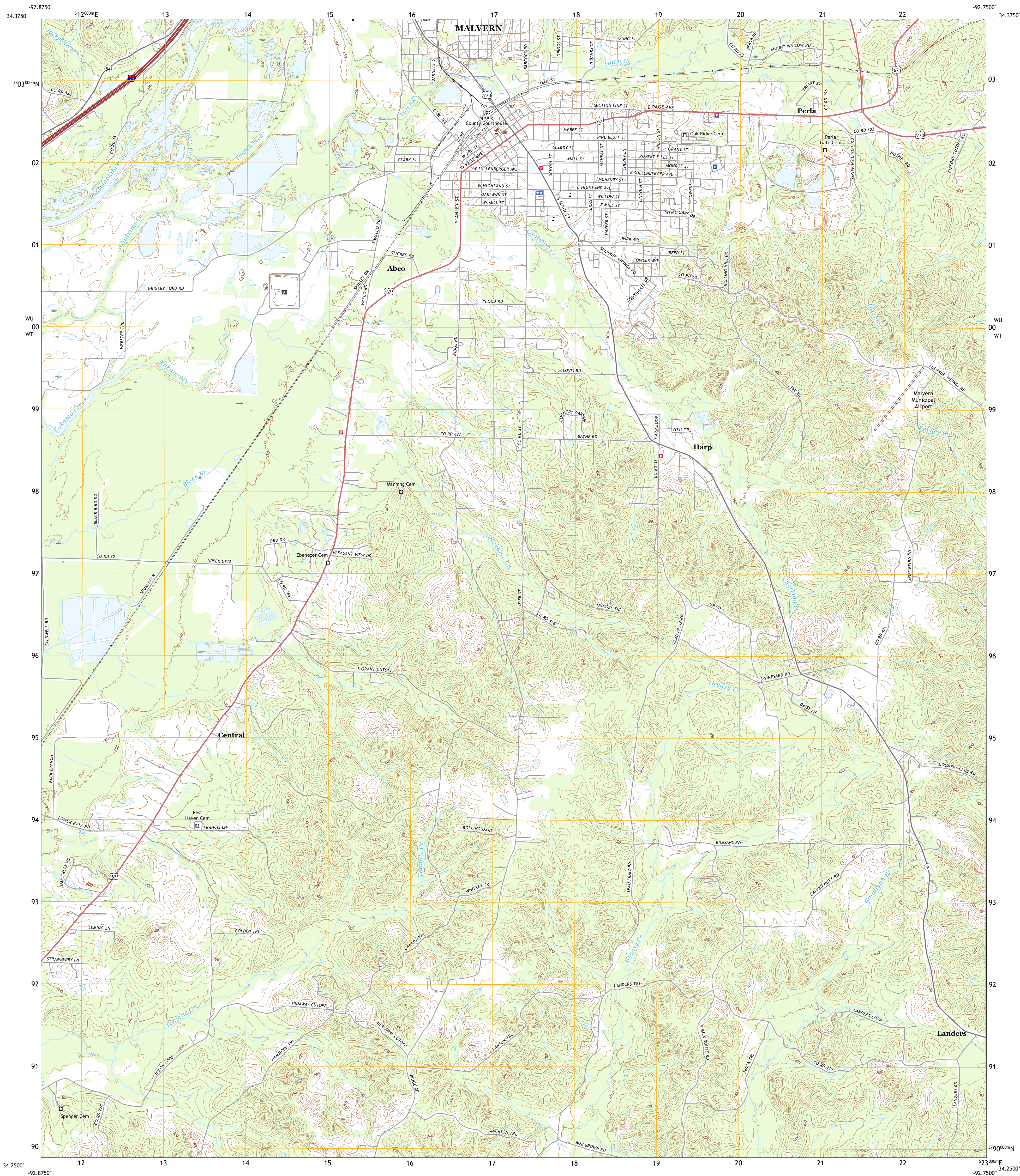




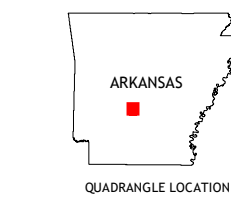
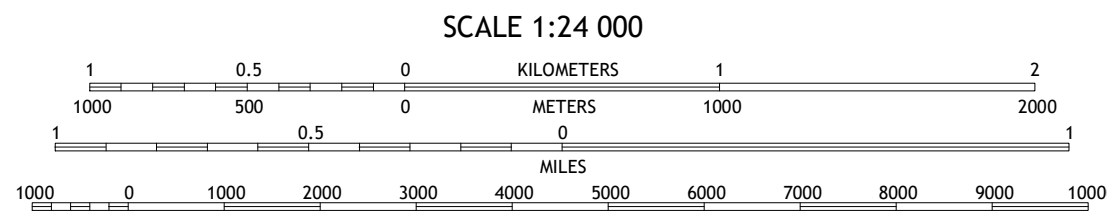
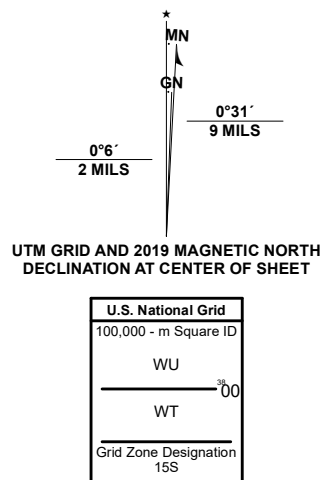
U.S. DEPARTMENT OF THE INTERIOR
U.S. GEOLOGICAL SURVEY



MALVERN SOUTH QUADRANGLE
ARKANSAS - HOT SPRING COUNTY
7.5-MINUTE SERIES



Produced by the United States Geological Survey
North American Datum of 1983 (NAD83)
World Geodetic System of 1984 (WGS84). Projection and
1 000-meter grid/Universal Transverse Mercator, Zone 15S
This map is not a legal document. Boundaries may be
generalized for this map scale. Private lands within government
reservations may not be shown. Obtain permission before
entering private lands.
Imagery.....NAIP, October 2017 - November 2017
Roads.....U.S. Census Bureau, 2016 - 2017
Names.....GNIS, 1980 - 2020
Hydrography.....National Hydrography Dataset, 2002 - 2019
Contours.....National Elevation Dataset, 2018
Boundaries.....Multiple sources; see metadata file 2018 - 2019
Public Land Survey System.....BLM, 2018
Wetlands.....FWS National Wetlands Inventory 1983



1	2	3
4	5	6
7	8	9

ADJOINING QUADRANGLES

ROAD CLASSIFICATION	
Expressway	Local Connector
Secondary Hwy	Local Road
Ramp	4WD
Interstate Route	US Route
	State Route

MALVERN SOUTH, AR
2020

