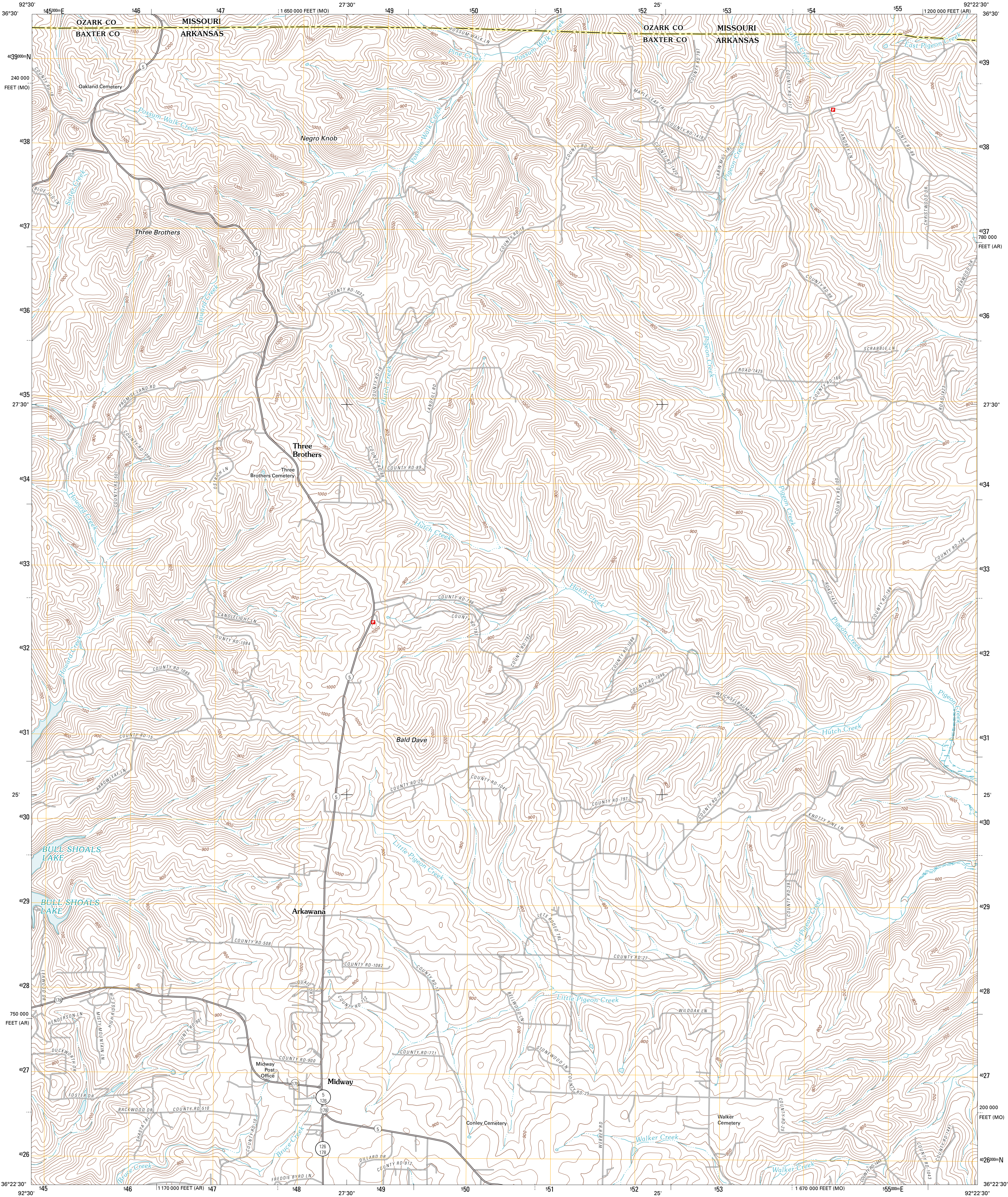




U.S. DEPARTMENT OF THE INTERIOR  
U. S. GEOLOGICAL SURVEY



MIDWAY QUADRANGLE  
ARKANSAS-MISSOURI  
7.5-MINUTE SERIES



Produced by the United States Geological Survey  
North American Datum of 1983 (NAD83)  
World Geodetic System of 1984 (WGS84). Projection and  
1 000-meter grid: Universal Transverse Mercator, Zone 15S  
10 000-foot ticks: Arkansas Coordinate System of 1983  
(north zone), Missouri Coordinate System of 1983 (central  
zone)

Imagery.....NAIP, September 2009  
Roads.....©2006-2010 Tele Atlas  
Names.....GNIS, 2010  
Hydrography.....National Hydrography Dataset, 2009  
Contours.....National Elevation Dataset, 2005  
Boundaries.....Census, IBWC, IBC, USGS, 1972 - 2010

UTM GRID AND 2011 MAGNETIC NORTH  
DECLINATION AT CENTER OF SHEET

|                       |
|-----------------------|
| U.S. National Grid    |
| 100,000-m Square ID   |
| WA                    |
| Grid Zone Designation |
| 15S                   |

SCALE 1:24 000

1 000 0 500 0 500 1 000 2 000  
KILOMETERS  
1 000 0 500 0 500 1 000 2 000  
METERS  
1 000 0 1000 2000 3000 4000 5000 6000 7000 8000 9000 10000  
MILES  
FEET

CONTOUR INTERVAL 20 FEET  
NORTH AMERICAN VERTICAL DATUM OF 1988

This map was produced to conform with version 0.5.10  
of the USGS US Topo Product Standard.  
A metadata file associated with this product is draft version 0.5.16



|             |                    |                    |
|-------------|--------------------|--------------------|
| Isabella    | Guineville         | Udall              |
| Bull Shoals | Midway             | Clarkridge         |
| Cotter      | Mountain Home West | Mountain Home East |

ROAD CLASSIFICATION

|                  |             |
|------------------|-------------|
| Interstate Route | State Route |
| US Route         | Local Road  |
| Ramp             | 4WD         |

Interstate Route US Route State Route

MIDWAY, AR-MO  
2011