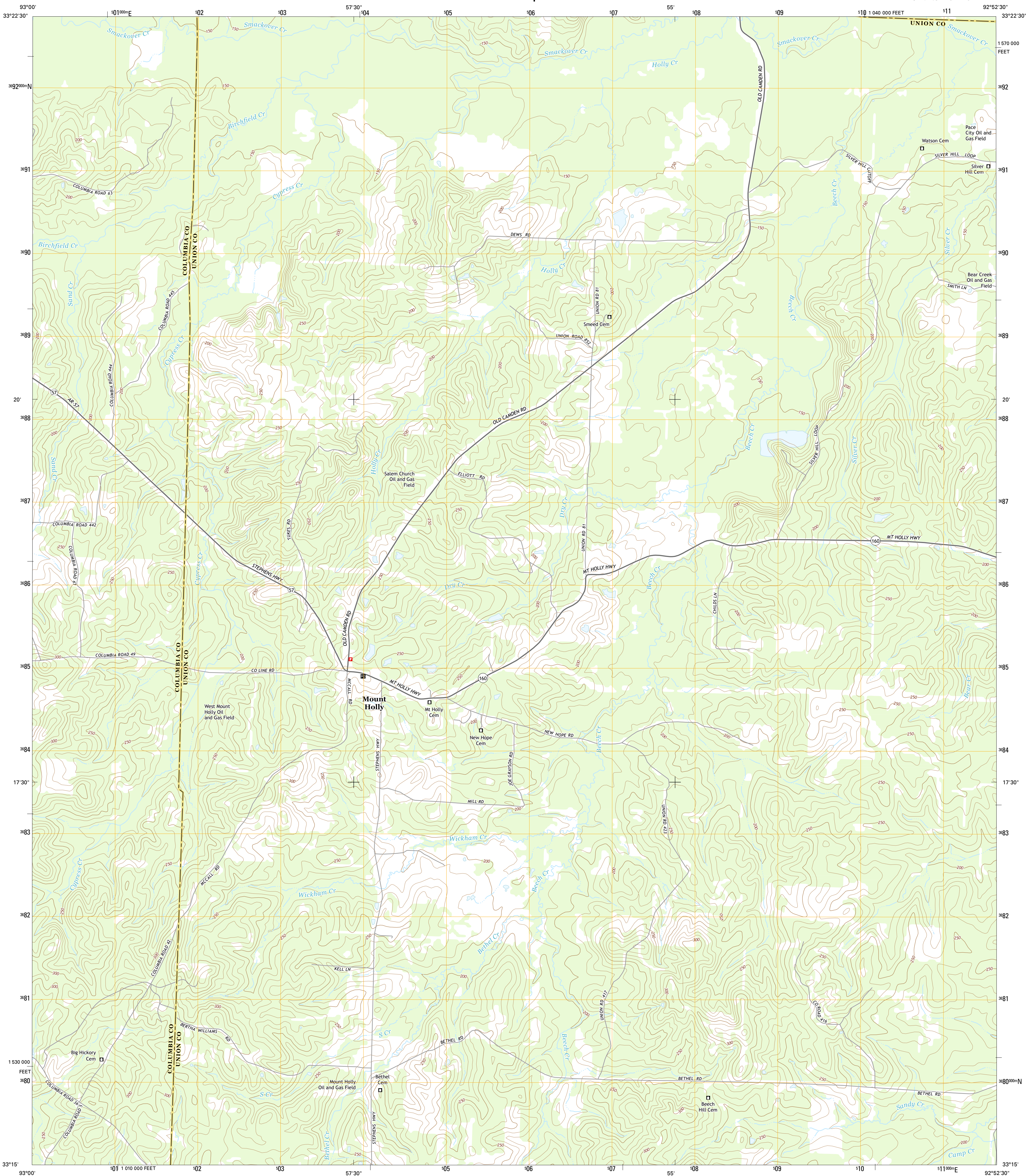




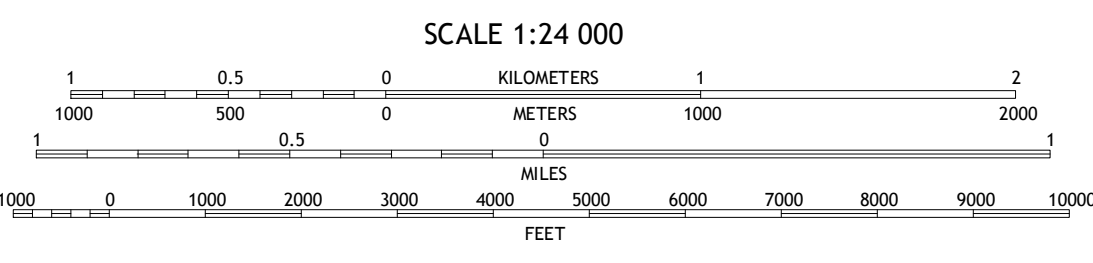
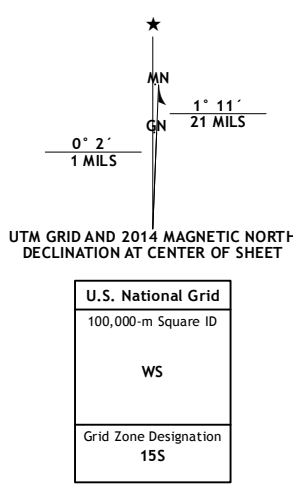
U.S. DEPARTMENT OF THE INTERIOR  
U.S. GEOLOGICAL SURVEY



MOUNT HOLLY QUADRANGLE  
ARKANSAS  
7.5-MINUTE SERIES



**Produced by the United States Geological Survey**  
North American Datum of 1983 (NAD83)  
World Geodetic System of 1984 (WGS84) Projection and  
1 000-meter grid: Universal Transverse Mercator, Zone 15S  
10 000-foot ticks: Arkansas Coordinate System of 1983 (south  
zone)  
This map is not a legal document. Boundaries may be  
generalized for this map scale. Private lands within government  
reservations may not be shown. Obtain permission before  
entering private lands.  
Imagery.....NAIP, August 2010  
Roads.....HERE, ©2013  
Names.....GNIS, 2013  
Hydrography.....National Hydrography Dataset, 2010  
Contours.....National Elevation Dataset, 2009  
Boundaries.....Multiple sources; see metadata file 1972 - 2013  
Public Land Survey System.....BLM, 2011



CONTOUR INTERVAL 10 FEET  
NORTH AMERICAN VERTICAL DATUM OF 1988  
This map was produced to conform with the  
National Geospatial Program US Topo Product Standard, 2011.  
A metadata file associated with this product is draft version 0.6.16



**ROAD CLASSIFICATION**

Expressway	Local Connector
Secondary Hwy	Local Road
Ramp	4WD
Interstate Route	US Route
	State Route

ADJOINING QUADRANGLES

1	2	3
4	5	6
7	8	

1 Stephens  
2 Buena Vista  
3 Louann  
4 Village  
5 Lisbon  
6 Spotville  
7 Marysville  
8 Newell

MOUNT HOLLY, AR  
2014

