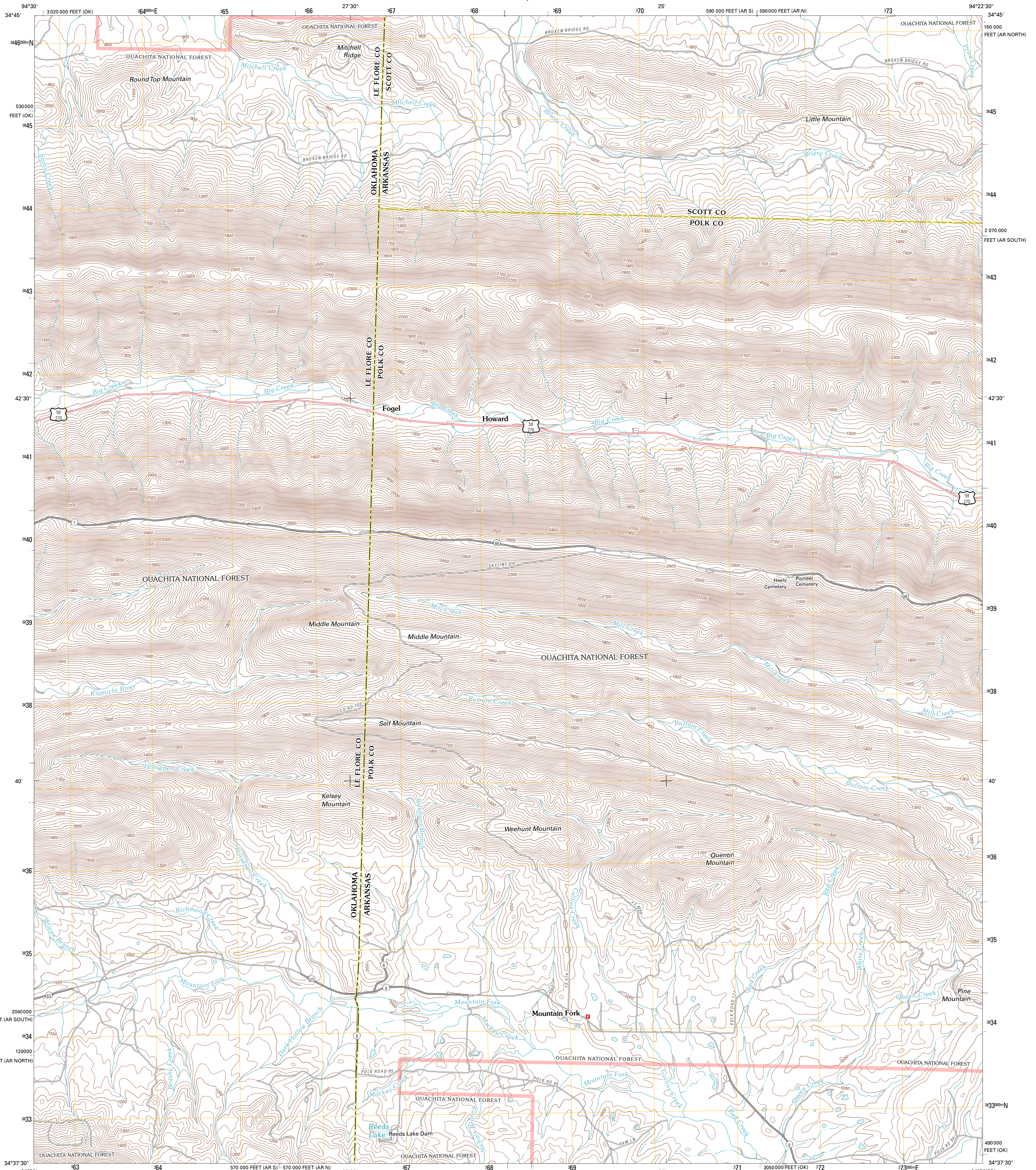




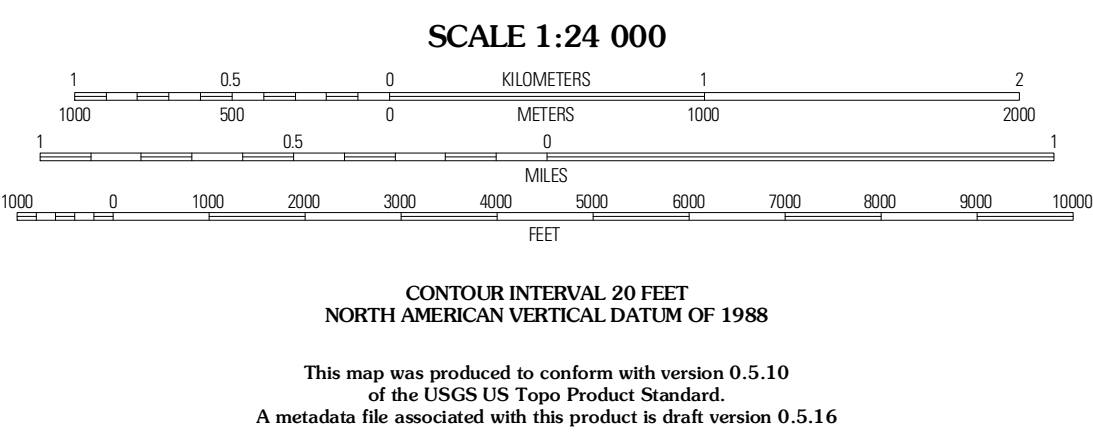
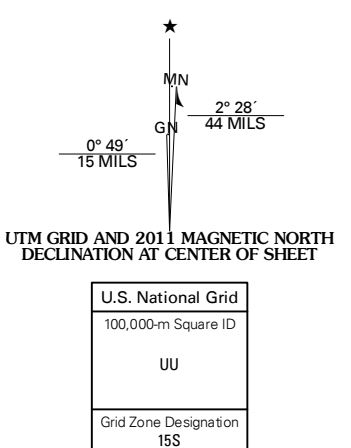
U.S. DEPARTMENT OF THE INTERIOR  
U. S. GEOLOGICAL SURVEY



**MOUNTAIN FORK QUADRANGLE**  
ARKANSAS-OKLAHOMA  
7.5-MINUTE SERIES



Produced by the United States Geological Survey  
North American Datum of 1983 (NAD83)  
World Geodetic System of 1984 (WGS84). Projection and  
10 000-foot ticks: Arkansas Transverse Mercator, Zone 15S  
(south and north zones), Oklahoma Coordinate System of  
1983 (south zone)  
Imagery:.....NAIP, September 2009  
Roads:.....©2006-2010 Tele Atlas  
Roads within US Forest Service Lands:.....FSTopo Data  
with limited Forest Service updates, 2009  
Names:.....©2009 National Hydrography Dataset, 2009  
Hydrography:.....National Hydrography Dataset, 2009  
Contours:.....National Elevation Dataset, 2003  
Boundaries:.....Census, IBWC, IBC, USGS, 1972 - 2010



QUADRANGLE LOCATION

Honubby	Loving	Horseshoe Mountain
Page	Mountain Fork	Rich Mountain
Lynn Mountain	Zafra	Potter

**ROAD CLASSIFICATION**

- Interstate Route
- US Route
- Ramp
- FS Primary Route
- State Route
- Local Road
- 4WD
- FS Passenger Route
- State Route
- FS High Clearance Route

Check with local Forest Service unit for current travel conditions and restrictions.

**MOUNTAIN FORK, AR-OK**  
2011

ADJOINING 7.5 QUADRANGLES