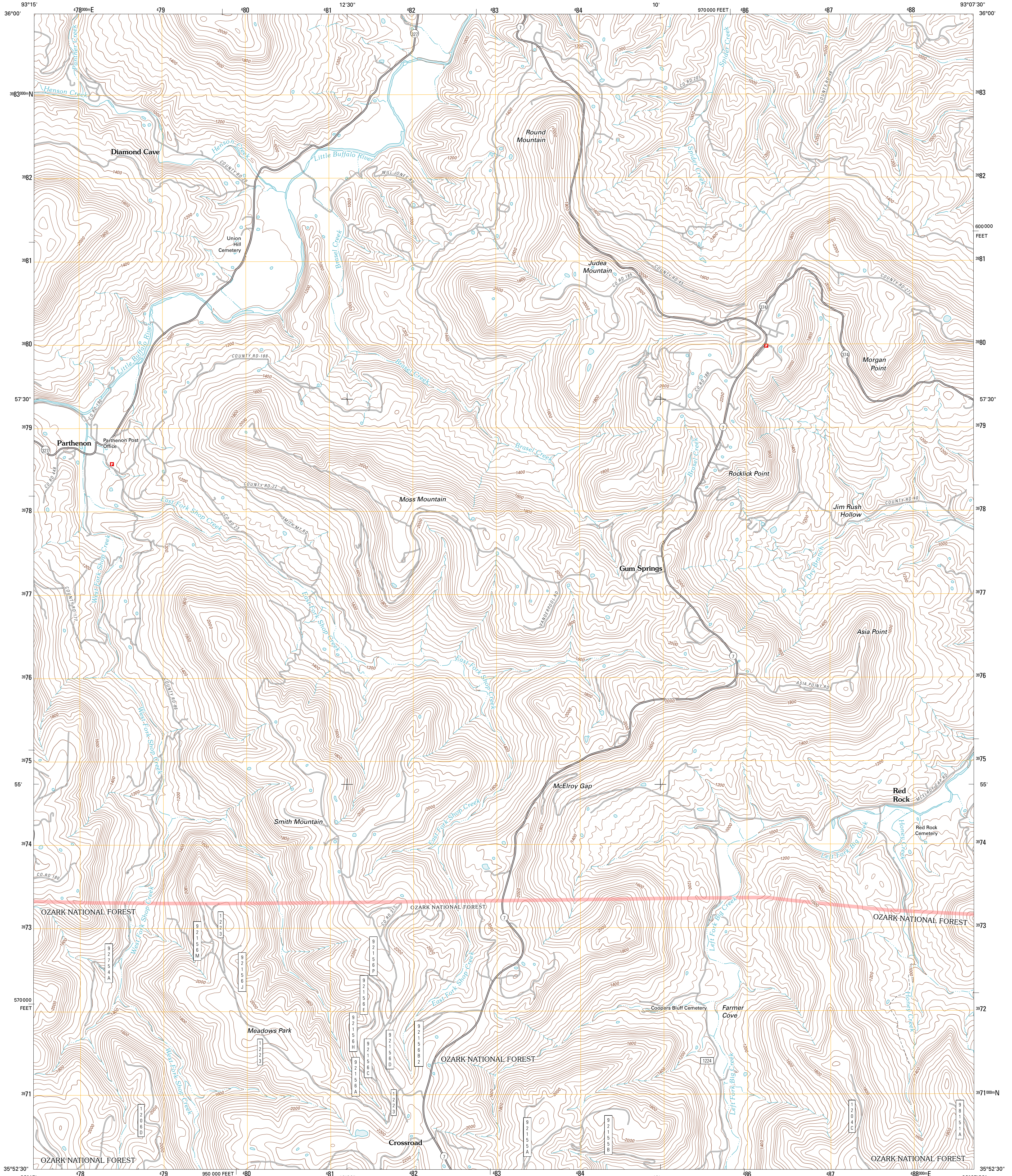




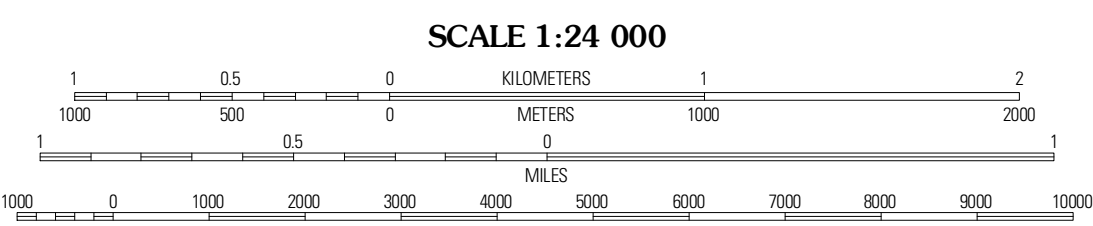
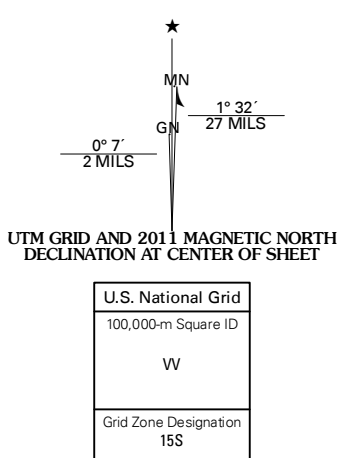
U.S. DEPARTMENT OF THE INTERIOR  
U. S. GEOLOGICAL SURVEY



PARTHENON QUADRANGLE  
ARKANSAS-NEWTON CO.  
7.5-MINUTE SERIES



Produced by the United States Geological Survey  
North American Datum of 1983 (NAD83)  
World Geodetic System of 1984 (WGS84). Projection and  
1 000-meter grid: Universal Transverse Mercator, Zone 15S  
10 000-foot ticks: Arkansas Coordinate System of 1983  
(north zone)



CONTOUR INTERVAL 40 FEET  
NORTH AMERICAN VERTICAL DATUM OF 1988

This map was produced to conform with version 0.5.10  
of the USGS US Topo Product Standard.  
A metadata file associated with this product is draft version 0.5.16



QUADRANGLE LOCATION

|        |           |             |
|--------|-----------|-------------|
| Ponca  | Jasper    | Hasty       |
| Murray | Parthenon | Mount Judea |
| Swain  | Deer      | Larton      |

**ROAD CLASSIFICATION**

Interstate Route State Route

US Route Local Road

Ramp 4WD

Interstate Route US Route

FS Primary Route FS Passenger Route

FS High Clearance Route

Check with local Forest Service unit  
for current travel conditions and restrictions.

PARTHENON, AR  
2011

ADJOINING 7.5 QUADRANGLES