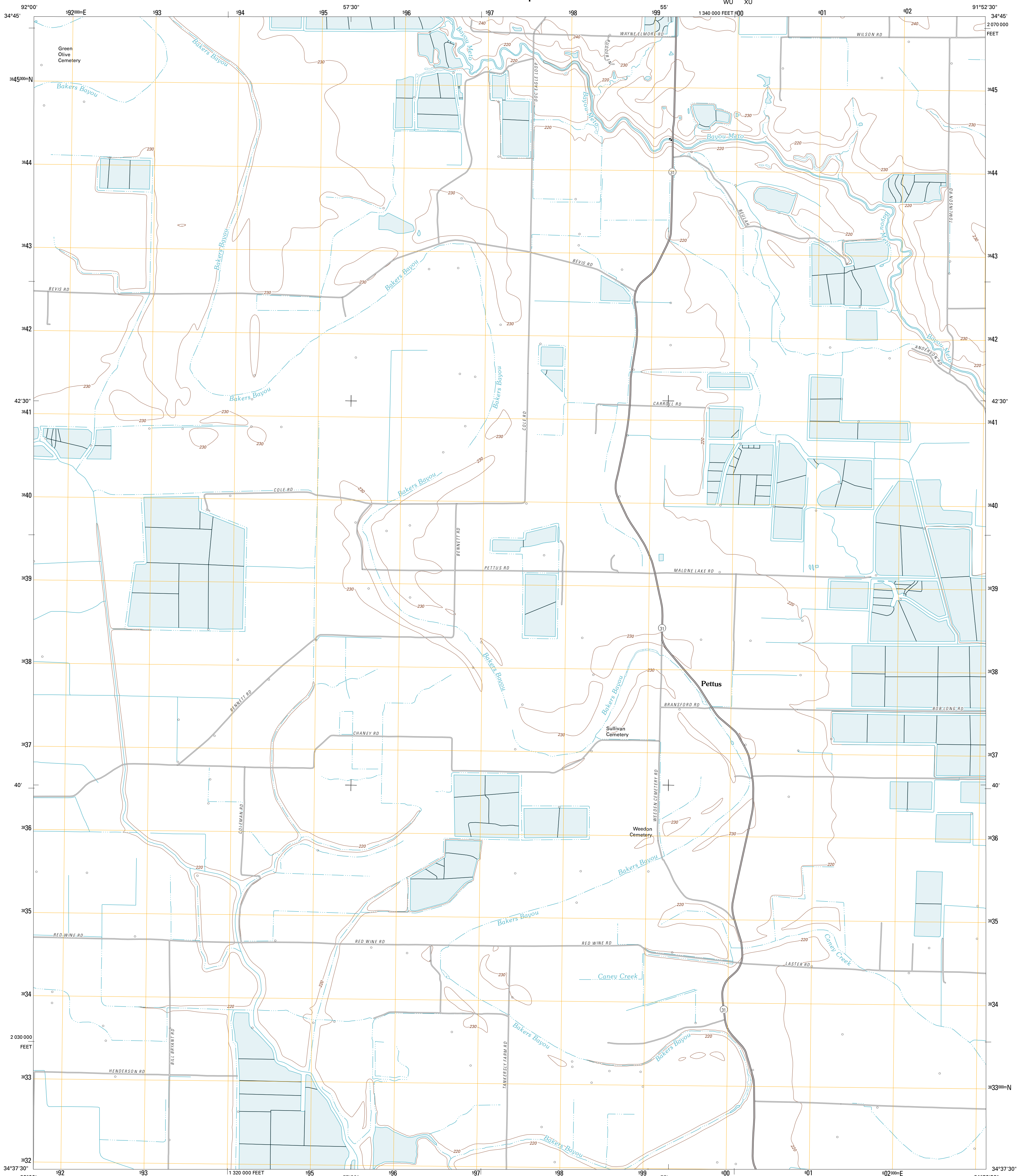




U.S. DEPARTMENT OF THE INTERIOR
U. S. GEOLOGICAL SURVEY

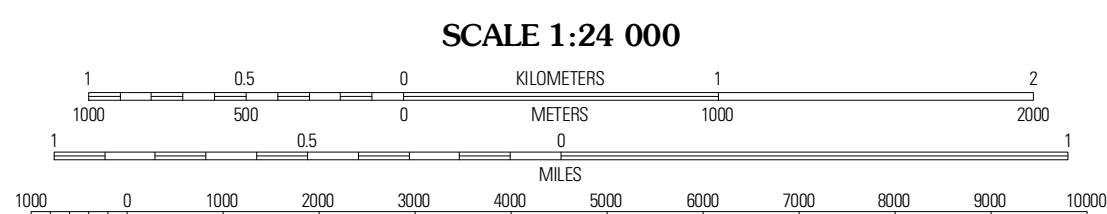
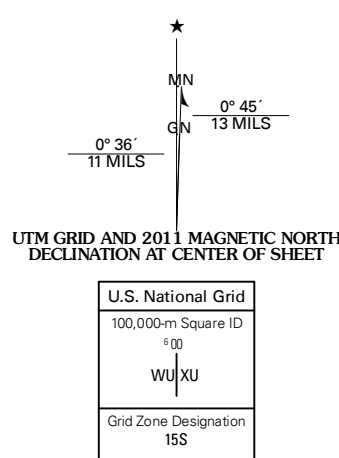


PETTUS QUADRANGLE
ARKANSAS-LONOKE CO.
7.5-MINUTE SERIES



Produced by the United States Geological Survey
North American Datum of 1983 (NAD83)
World Geodetic System of 1984 (WGS84). Projection and
10 000-foot ticks: Arkansas Coordinate System of 1983
(south zone)

Imagery: NAIP, August 2009
Roads: 2006-2010 Title Atlas
Names: GNIS, 2010
Hydrography: National Hydrography Dataset, 2009
Contours: National Elevation Dataset, 1999
Boundaries: Census, IBWC, IBC, USGS, 1972 - 2010



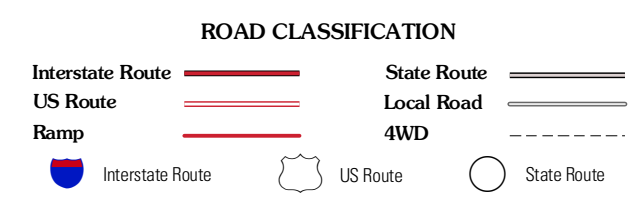
CONTOUR INTERVAL 10 FEET
NORTH AMERICAN VERTICAL DATUM OF 1988

This map was produced to conform with version 0.5.10
of the USGS US Topo Product Standard.
A metadata file associated with this product is draft version 0.5.16



QUADRANGLE LOCATION

Jacksonville	Lonoke	Pocket Prairie
Scott	Pettus	Calder
Keo	England	Hummock



PETTUS, AR
2011

ADJOINING 7.5 QUADRANGLES