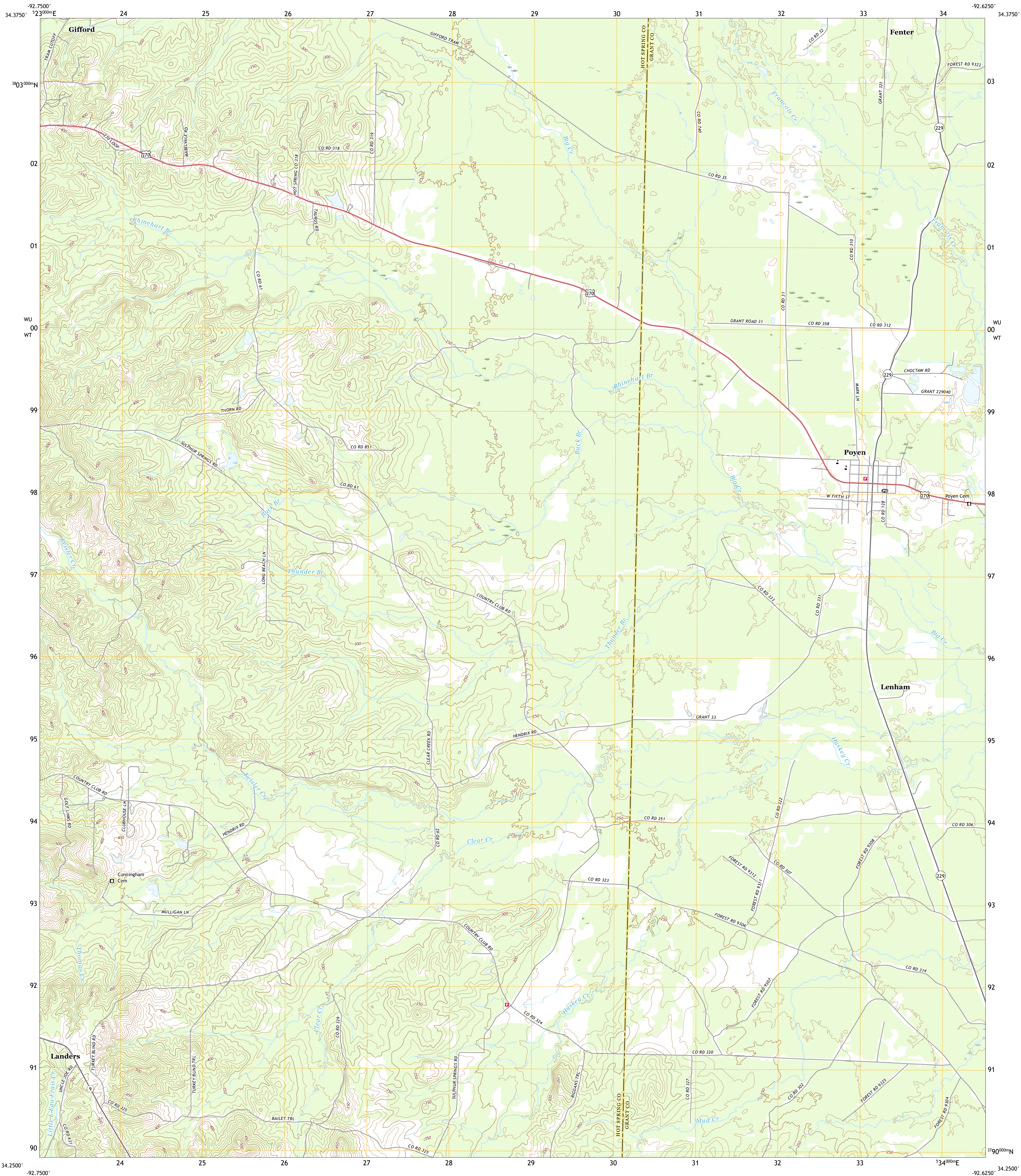




U.S. DEPARTMENT OF THE INTERIOR  
U.S. GEOLOGICAL SURVEY



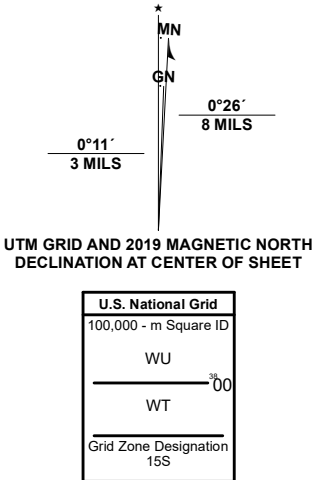
POYEN QUADRANGLE  
ARKANSAS  
7.5-MINUTE SERIES



Produced by the United States Geological Survey

North American Datum of 1983 (NAD83)  
World Geodetic System of 1984 (WGS84). Projection and  
1 000-meter grid/Universal Transverse Mercator, Zone 15S  
This map is not a legal document. Private lands within government  
reservations may not be shown. Obtain permission before  
entering private lands.

Imagery.....NAIP, October 2017 - November 2017  
Roads.....U.S. Census Bureau, 2016 - 2017  
Names.....GNIS, 1980 - 2020  
Hydrography.....National Hydrography Dataset, 2002 - 2019  
Contours.....National Elevation Dataset, 2018  
Boundaries.....Multiple sources; see metadata file 2018 - 2019  
Public Land Survey System.....BLM, 2018  
Wetlands.....FWS National Wetlands Inventory 1983 - 1985



CONTOUR INTERVAL 10 FEET  
NORTH AMERICAN VERTICAL DATUM OF 1988  
This map was produced to conform with the  
National Geospatial Program US Topo Product Standard, 2011.  
A metadata file associated with this product is draft version 0.6.18



1	2	3
4	5	6
7	8	9

ADJOINING QUADRANGLES

1 Malvern North  
2 Traskwood  
3 Tull  
4 Malvern South  
5 Prattsville  
6 Round Hill  
7 Willow  
8 Leola

ROAD CLASSIFICATION

Expressway  
Secondary Hwy  
Ramp  
Interstate Route  
Local Connector  
Local Road  
4WD  
US Route  
State Route

POYEN, AR  
2020

