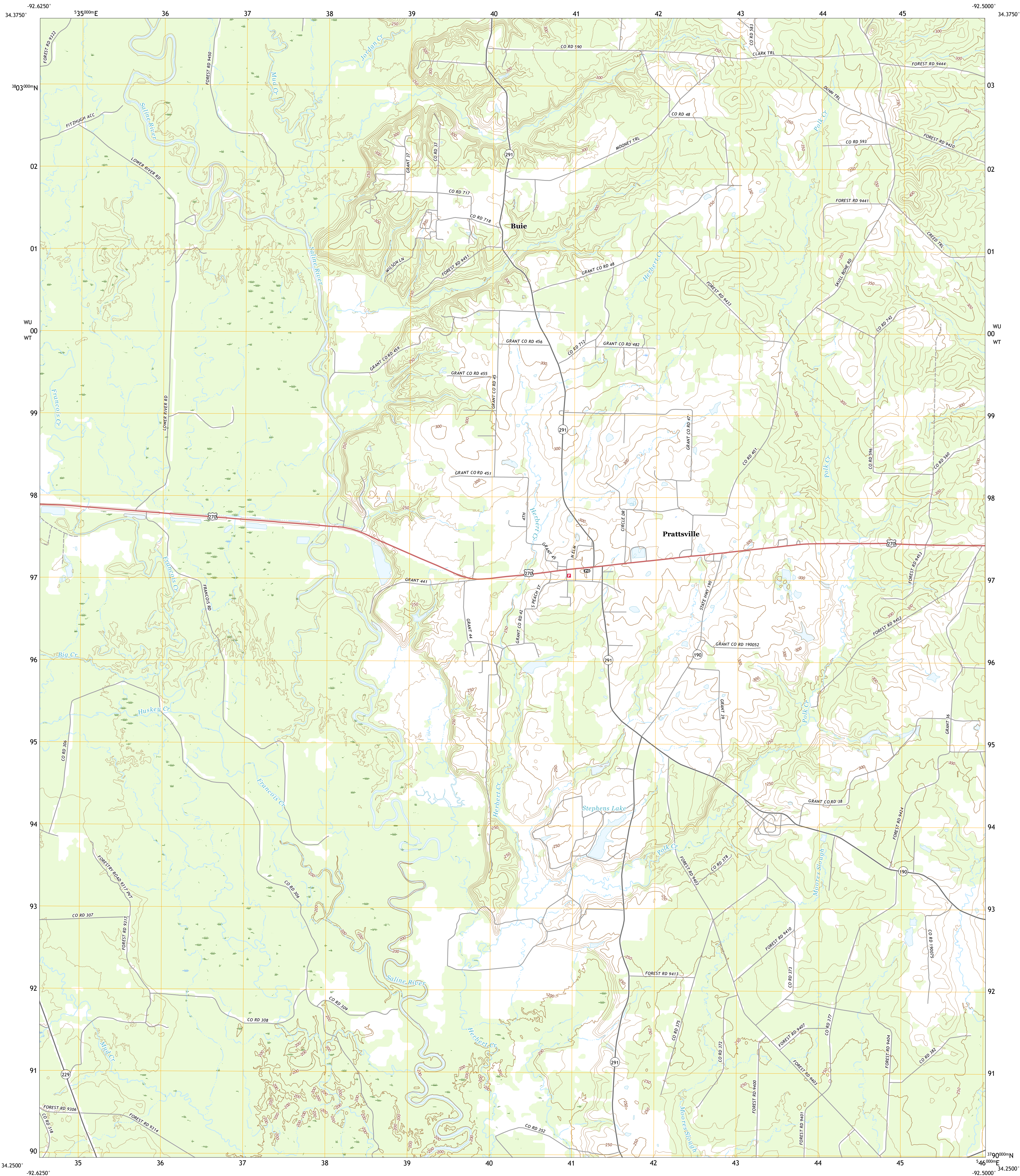




U.S. DEPARTMENT OF THE INTERIOR
U.S. GEOLOGICAL SURVEY



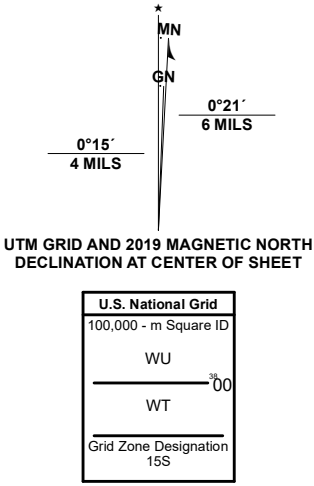
PRATTSVILLE QUADRANGLE
ARKANSAS - GRANT COUNTY
7.5-MINUTE SERIES



Produced by the United States Geological Survey

North American Datum of 1983 (NAD83)
World Geodetic System of 1984 (WGS84) - Projection and
1 000-meter grid/Universal Transverse Mercator, Zone 15S
This map is not a legal document. Boundaries may be
generalized for this map scale. Private lands within government
reservations may not be shown. Obtain permission before
entering private lands.

Imagery.....NAIP, October 2017 - November 2017
Roads.....U.S. Census Bureau, 2016 - 2017
Names.....GNIS, 1980 - 2020
Hydrography.....National Hydrography Dataset, 1999 - 2019
Contours.....National Elevation Dataset, 2018
Boundaries.....Multiple sources; see metadata file 2018 - 2019
Public Land Survey System.....BLM, 2018
Wetlands.....FWS National Wetlands Inventory 1983 - 1985



1	2	3
4	5	6
7	8	9

- 1 Traskwood
- 2 Tull
- 3 Belfast
- 4 Poyen
- 5 Sheridan
- 6 Willow
- 7 Leola
- 8 Millerville

ROAD CLASSIFICATION

Expressway	Local Connector
Secondary Hwy	Local Road
Ramp	4WD
Interstate Route	US Route
	State Route

PRATTSVILLE, AR
2020



NSN 7540-01-603-0000
USGS X 2.4 K 3 6 3 5 1