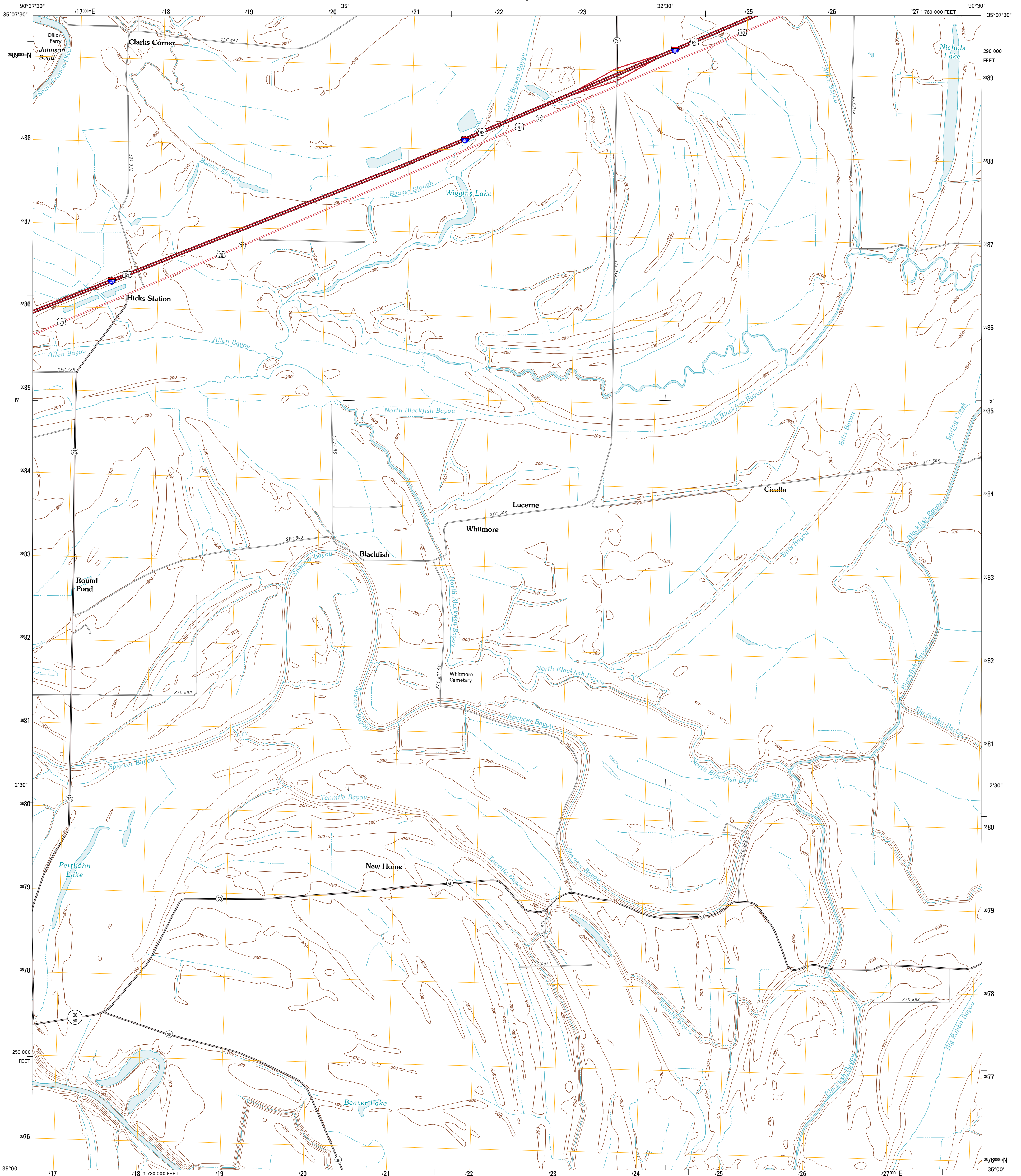




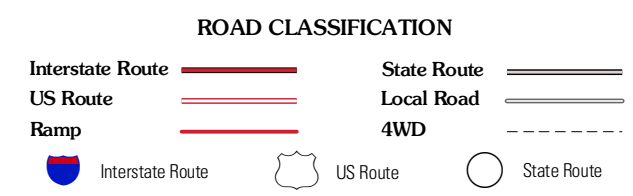
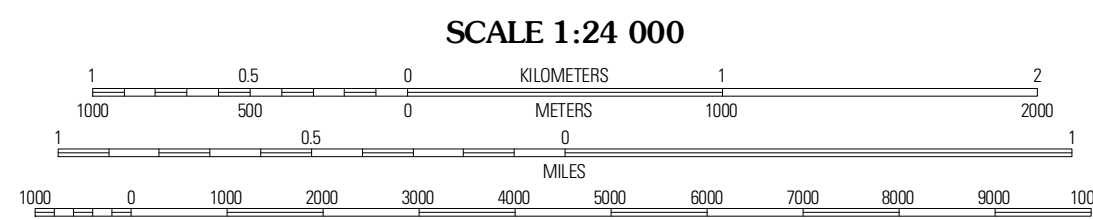
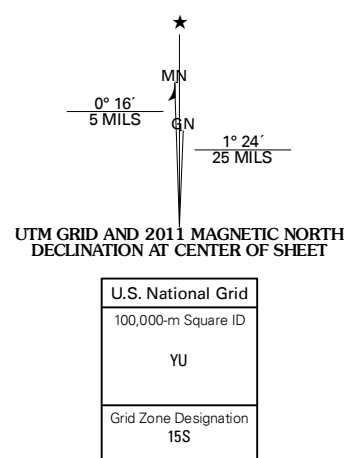
U.S. DEPARTMENT OF THE INTERIOR  
U. S. GEOLOGICAL SURVEY



ROUND POND QUADRANGLE  
ARKANSAS-ST. FRANCIS CO.  
7.5-MINUTE SERIES



Produced by the United States Geological Survey  
North American Datum of 1983 (NAD83)  
World Geodetic System of 1984 (WGS84). Projection and  
1 000-meter grid. Universal Transverse Mercator, Zone 15S  
10 000-foot ticks: Arkansas Coordinate System of 1983  
(north zone)



Imagery:.....NAP, September 2009  
Roads:.....©2006-2010 Tele Atlas  
Names:.....GNIS, 2010  
Hydrography:.....National Hydrography Dataset, 2009  
Contours:.....National Elevation Dataset, 1999  
Boundaries:.....Census, IBWC, IBC, USGS, 1972 - 2010

U.S. National Grid  
100,000-m Square ID  
YU  
Grid Zone Designation  
15S

SCALE 1:24 000  
CONTOUR INTERVAL 10 FEET  
NORTH AMERICAN VERTICAL DATUM OF 1988  
This map was produced to conform with version 0.5.10  
of the USGS US Topo Product Standard.  
A metadata file associated with this product is draft version 0.5.16

QUADRANGLE LOCATION

Wittsburg	Glaseck	Jeanette
Mudson	Round Pond	Chatfield
Dansby	Mud Lake	Hughes

ADJOINING 7.5' QUADRANGLES

ROUND POND, AR  
2011