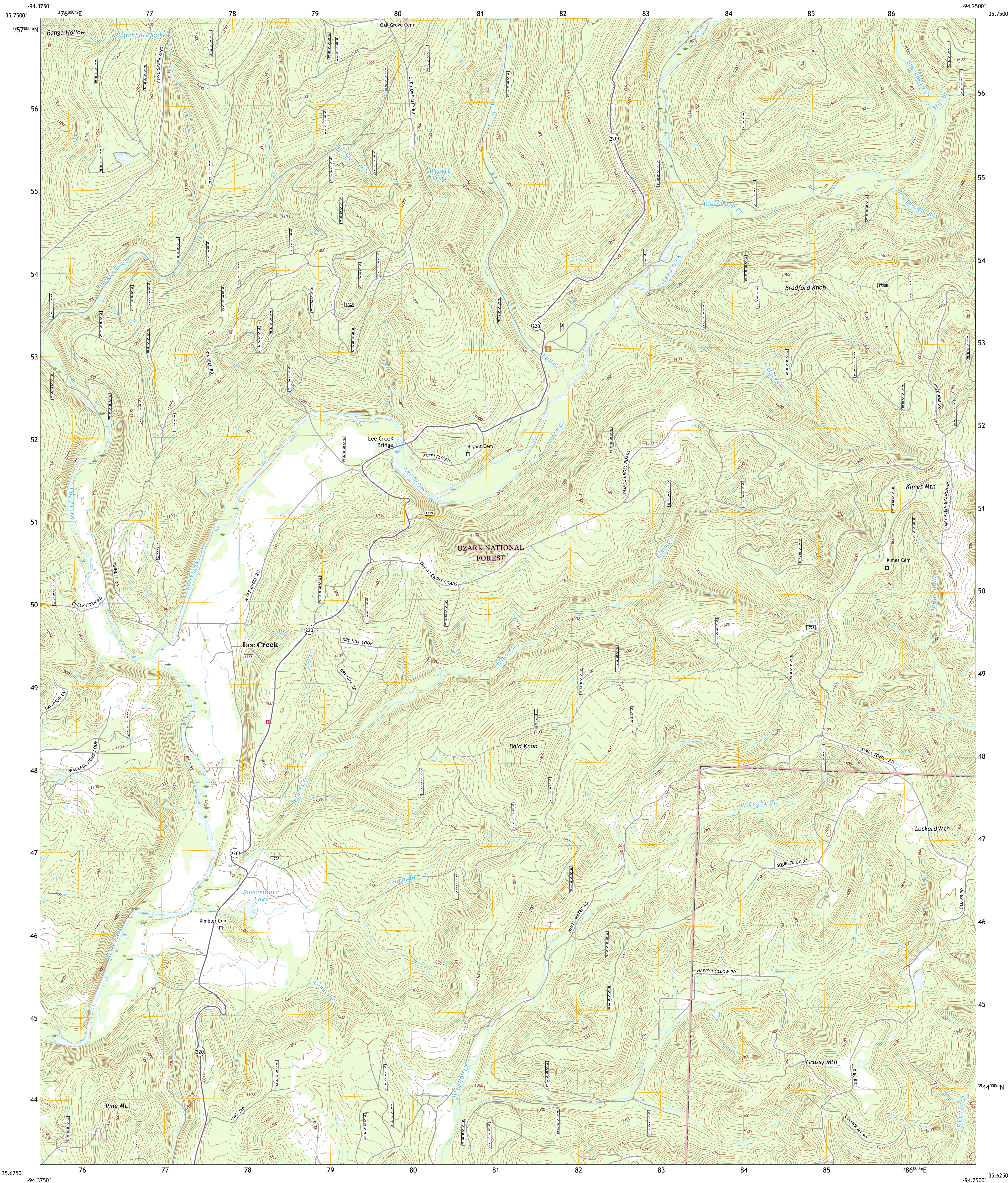




U.S. DEPARTMENT OF THE INTERIOR  
U.S. GEOLOGICAL SURVEY



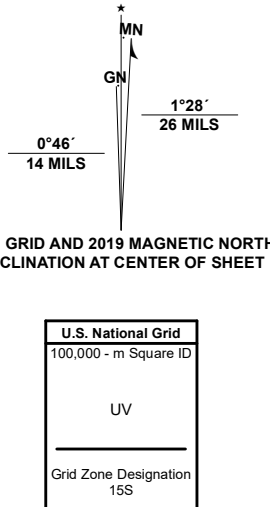
RUDY NE QUADRANGLE  
ARKANSAS - CRAWFORD COUNTY  
7.5-MINUTE SERIES



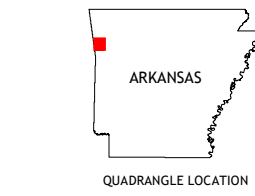
Produced by the United States Geological Survey

North American Datum of 1983 (NAD83)  
World Geodetic System of 1984 (WGS84). Projection and  
1 000-meter grid: Universal Transverse Mercator, Zone 15S  
This map is not a legal document. Boundaries may be  
generalized for this map scale. Private lands within government  
reservations may not be shown. Obtain permission before  
entering private lands.

Imagery.....NAIP, September 2017 - November 2017  
Roads.....U.S. Census Bureau, 2017  
Roads within US Forest Service Lands.....FSTopo Data  
with limited Forest Service updates, 2014 - 2017  
Names.....GNS, 1980 - 2020  
Hydrography.....National Hydrography Dataset, 1899 - 2018  
Contours.....National Elevation Dataset, 2000 - 2018  
Boundaries.....Multiple sources; see metadata file 2018 - 2019  
Public Land Survey System.....BLM, 2018  
Wetlands.....FWS National Wetlands Inventory 1980 - 1981



CONTOUR INTERVAL 20 FEET  
NORTH AMERICAN VERTICAL DATUM OF 1988  
This map was produced to conform with the  
National Geospatial Program US Topo Product Standard, 2011.  
A metadata file associated with this product is draft version 0.6.18



1	2	3	1 Evansville
4	5	6	2 Strickler
7	8	9	3 Winslow
			4 Natural Dam
			5 Mountainburg
			6 Uniontown
			7 Rudy
			8 Mountainburg SW

ROAD CLASSIFICATION	
Expressway	Local Connector
Secondary Hwy	Local Road
Ramp	4WD
Interstate Route	US Route
FS Primary Route	State Route
FS Passenger Route	FS High Clearance Route

Check with local Forest Service unit  
for current travel conditions and restrictions.

RUDY NE, AR  
2020

