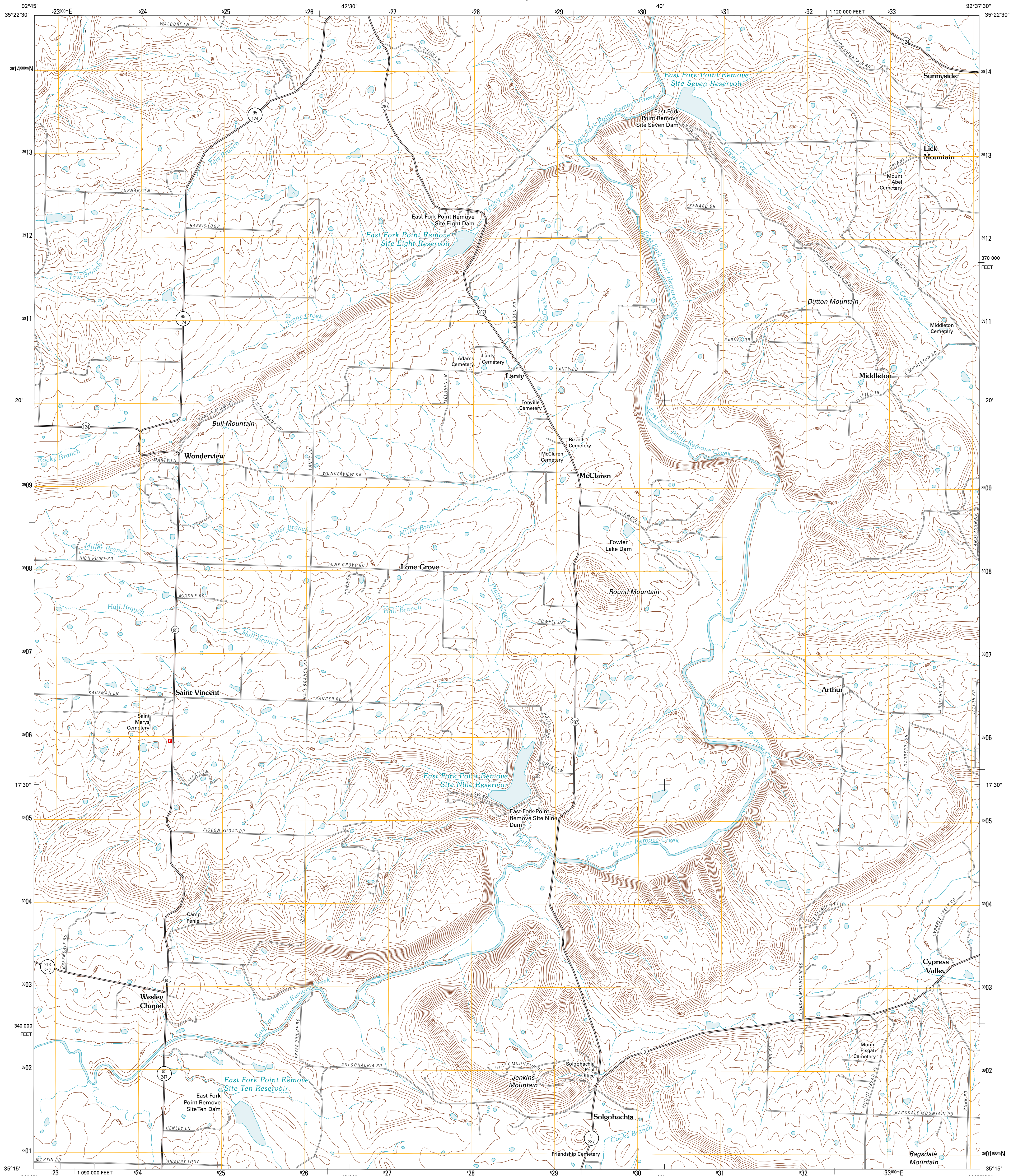




U.S. DEPARTMENT OF THE INTERIOR
U. S. GEOLOGICAL SURVEY



SOLGOHACHIA QUADRANGLE
ARKANSAS-CONWAY CO.
7.5-MINUTE SERIES

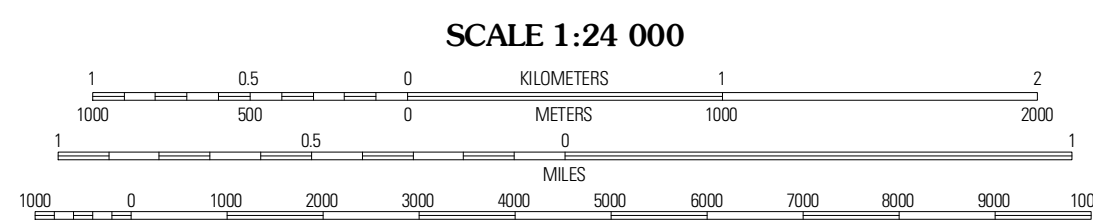


Produced by the United States Geological Survey
North American Datum of 1983 (NAD83)
World Geodetic System of 1984 (WGS84). Projection and
1 000-meter grid: Universal Transverse Mercator, Zone 15S
10 000-foot ticks: Arkansas Coordinate System of 1983
(north zone)

Imagery.....NAP, August 2009 - September 2009
Roads.....1:2006-2010 Tele Atlas
Names.....GNIS, 2010
Hydrography.....National Hydrography Dataset, 2009
Contours.....National Elevation Dataset, 2000
Boundaries.....Census, IBWC, IBC, USGS, 1972 - 2010

UTM GRID AND 2011 MAGNETIC NORTH
DECLINATION AT CENTER OF SHEET

U.S. National Grid
100,000-m Square ID
WV
Grid Zone Designation
15S



CONTOUR INTERVAL 20 FEET
NORTH AMERICAN VERTICAL DATUM OF 1988

This map was produced to conform with version 0.5.10
of the USGS US Topo Product Standard.
A metadata file associated with this product is draft version 0.5.16



QUADRANGLE LOCATION

Jerusalem	Cleveland	Formosa
Hartsville	Solgohachia	Springfield
Morrison West	Morrison East	Memife

ROAD CLASSIFICATION

Interstate Route	State Route
US Route	Local Road
Ramp	4WD

SOLGOHACHIA, AR
2011

ADJOINING 7.5 QUADRANGLES