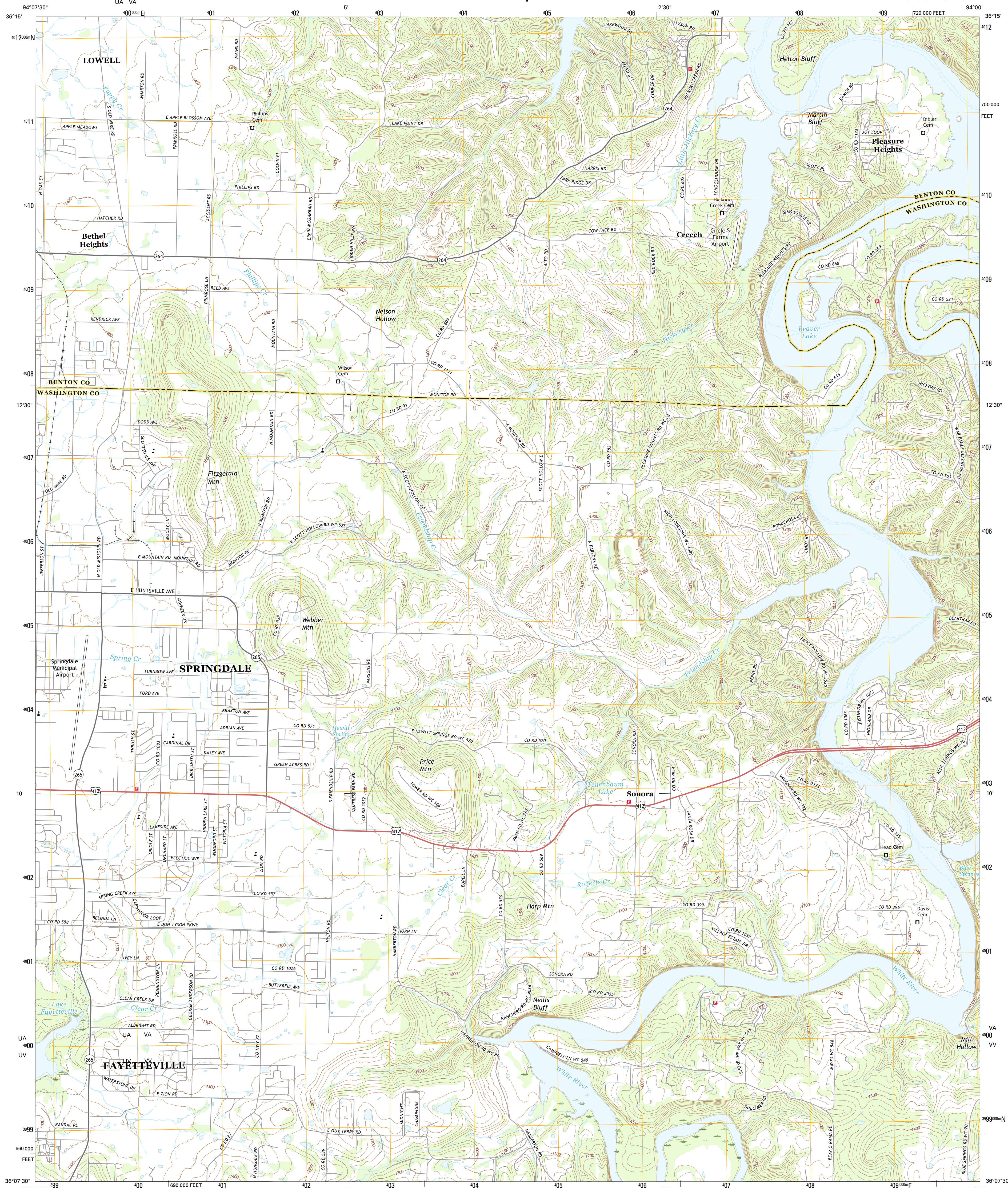




U.S. DEPARTMENT OF THE INTERIOR  
U.S. GEOLOGICAL SURVEY



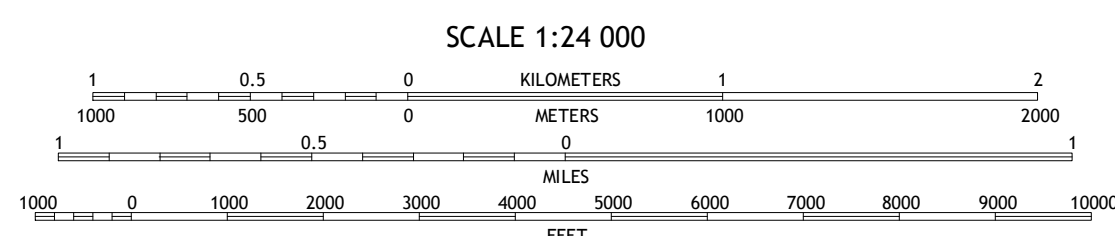
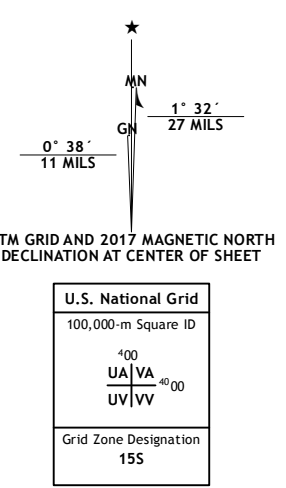
SONORA QUADRANGLE  
ARKANSAS  
7.5-MINUTE SERIES



Produced by the United States Geological Survey  
North American Datum of 1983 (NAD83)  
World Geodetic System of 1984 (WGS84) Projection and  
1 000-meter grid: Universal Transverse Mercator, Zone 15S  
10 000-foot ticks: Arkansas Coordinate System of 1983 (north  
zone)

This map is not a legal document. Boundaries may be  
generalized for this map scale. Private lands within government  
reservations may not be shown. Obtain permission before  
entering private lands.

Imagery:.....NAIP, December 2015  
Roads:.....U.S. Census Bureau, 2015 - 2016  
Names:.....GNIS, 2016  
Hydrography:.....National Hydrography Dataset, 2015  
Contours:.....National Elevation Dataset, 2016  
Boundaries:.....Multiple sources; see metadata file 1972 - 2016  
Public Land Survey System:.....BLM, 2015  
Wetlands:.....FWS National Wetlands Inventory 1977 - 2014



CONTOUR INTERVAL 20 FEET  
NORTH AMERICAN VERTICAL DATUM OF 1988

This map was produced to conform with the  
National Geospatial Program US Topo Product Standard, 2011.  
A metadata file associated with this product is draft version 0.6.19



ROAD CLASSIFICATION

Expressway	Local Connector
Secondary Hwy	Local Road
Ramp	4WD
Interstate Route	US Route
	State Route

ADJOINING QUADRANGLES

1	2	3
4	5	6
7	8	

- 1 Bentonville South
- 2 Rogers
- 3 War Eagle
- 4 Springdale
- 5 Spring Valley
- 6 Fayetteville
- 7 Elkins
- 8 Goshen

SONORA, AR  
2017

