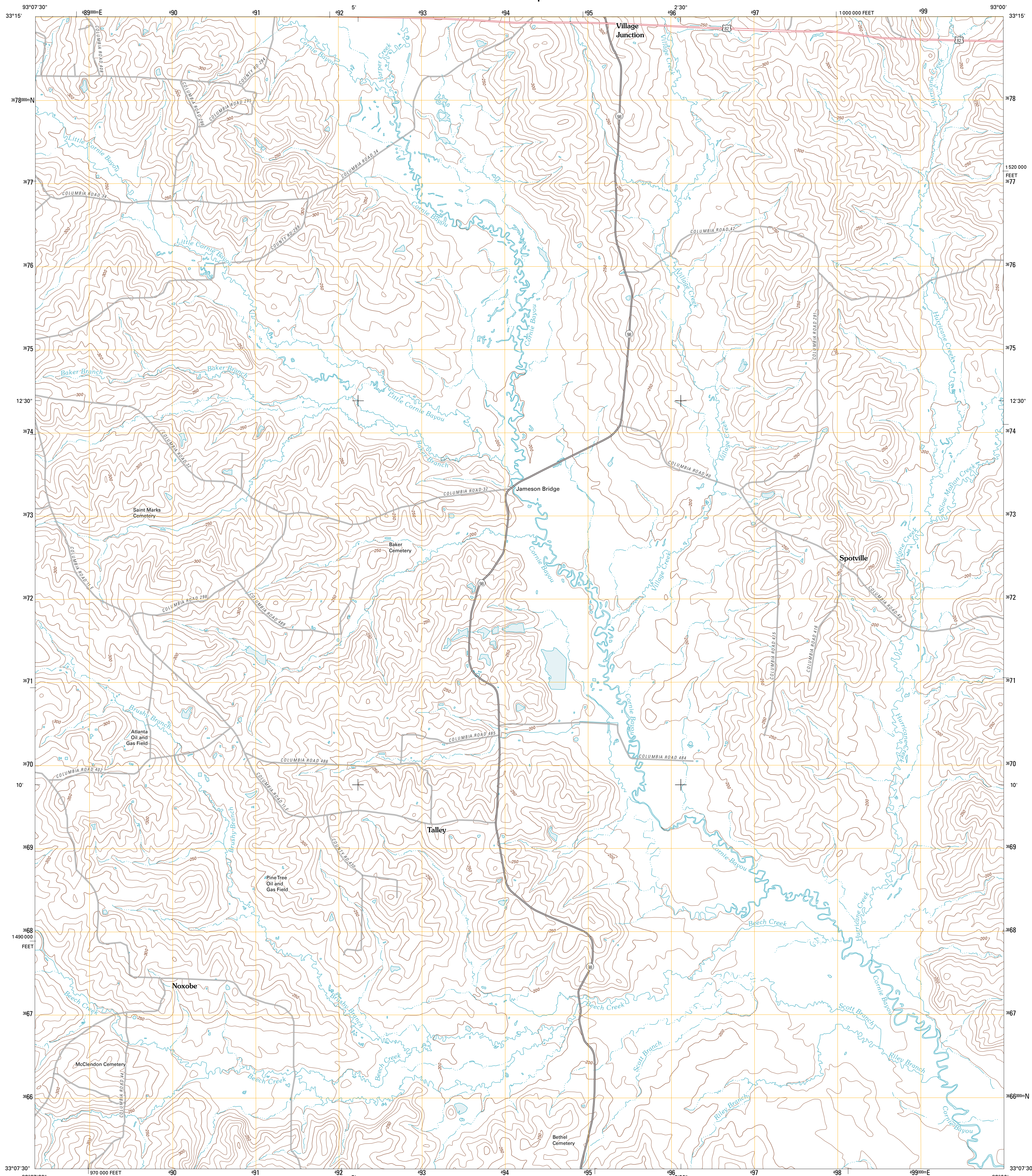




U.S. DEPARTMENT OF THE INTERIOR
U. S. GEOLOGICAL SURVEY

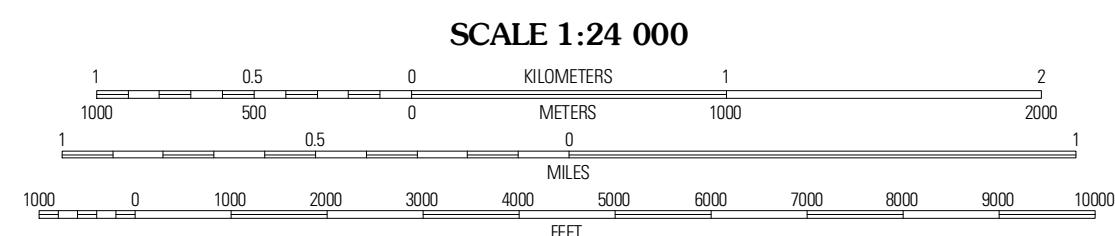
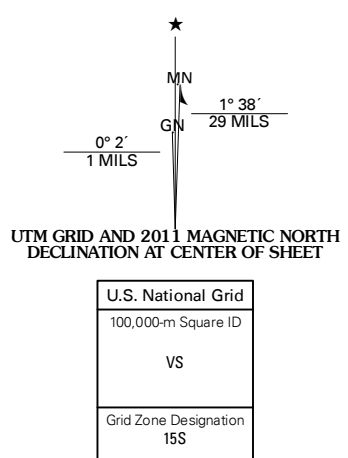


SPOTVILLE QUADRANGLE
ARKANSAS-COLUMBIA CO.
7.5-MINUTE SERIES



Produced by the United States Geological Survey
North American Datum of 1983 (NAD83)
World Geodetic System of 1984 (WGS84). Projection and
1000-foot ticks: Arkansas Coordinate System of 1983
(south zone)

Imagery: NIP, September 2009
Roads: 6/2006-2010 Tele Atlas
Names: GNIS, 2010
Hydrography: National Hydrography Dataset, 2009
Contours: National Elevation Dataset, 2009
Boundaries: Census, IBWC, IBC, USGS, 1972 - 2010



CONTOUR INTERVAL 10 FEET
NORTH AMERICAN VERTICAL DATUM OF 1988
This map was produced to conform with version 0.5.10
of the USGS US Topo Product Standard.
A metadata file associated with this product is draft version 0.5.16



QUADRANGLE LOCATION

Magnolia	Village	Mount Holly
Calhoun	Spotville	Marysville
Emerson	Emerson SE	Wesson SW

ROAD CLASSIFICATION

Interstate Route	State Route
US Route	Local Road
Ramp	4WD
Interstate Route	US Route
	State Route

SPOTVILLE, AR
2011

ADJOINING 7.5 QUADRANGLES