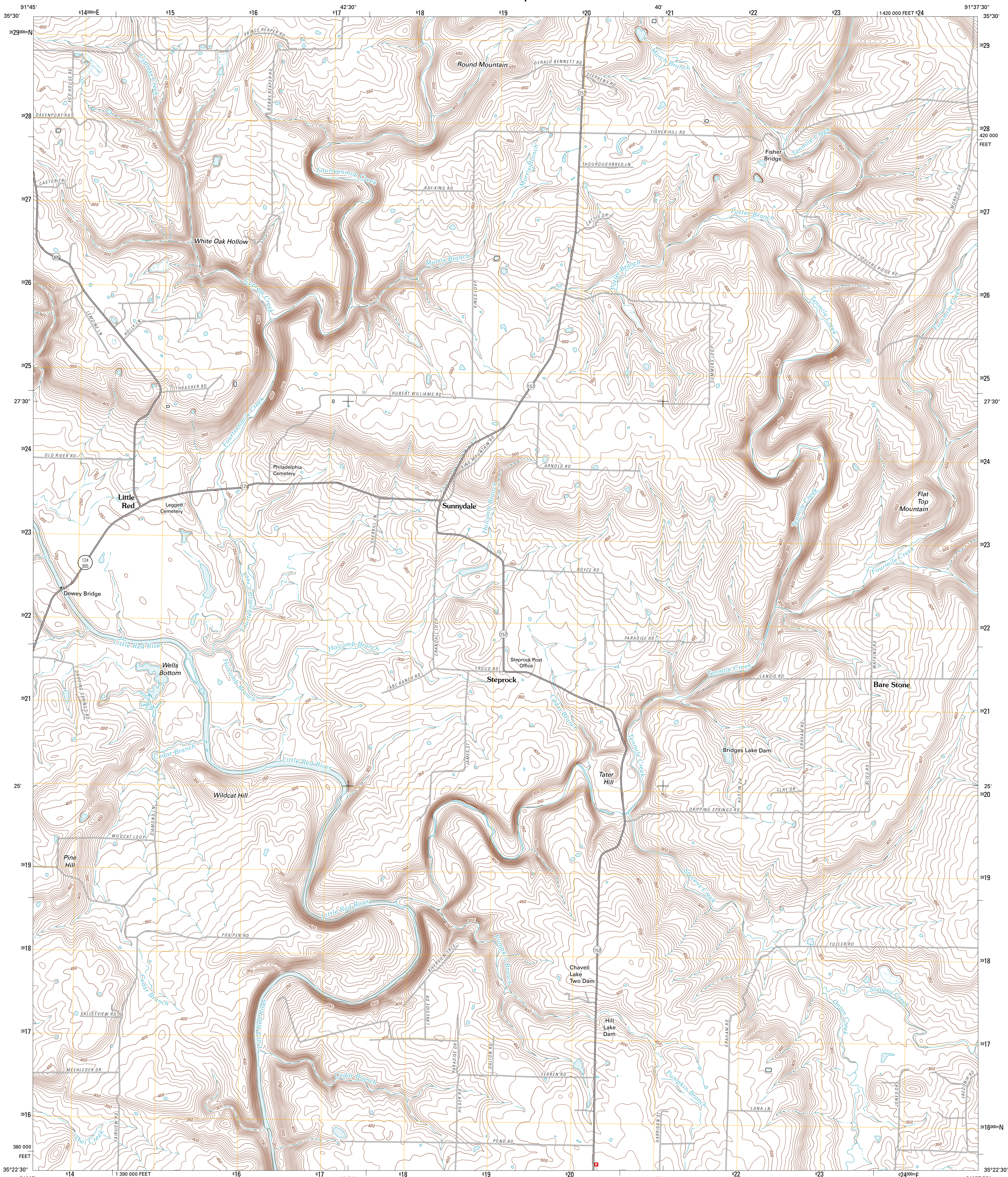




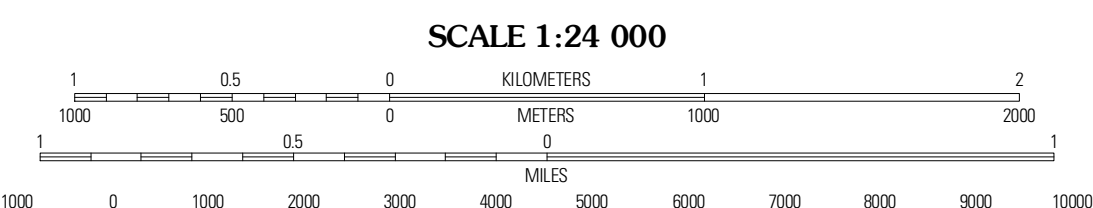
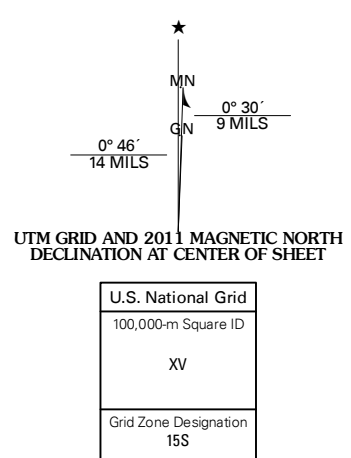
U.S. DEPARTMENT OF THE INTERIOR  
U. S. GEOLOGICAL SURVEY



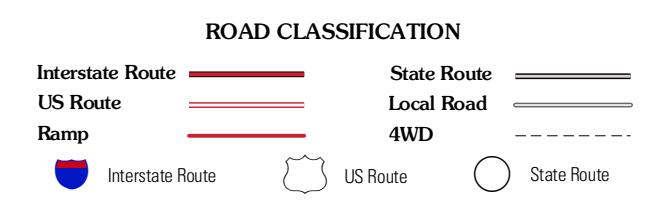
STEPROCK QUADRANGLE  
ARKANSAS-WHITE CO.  
7.5-MINUTE SERIES



Produced by the United States Geological Survey  
North American Datum of 1983 (NAD83)  
World Geodetic System of 1984 (WGS84). Projection and  
10 000-foot ticks: Arkansas Coordinate System of 1983  
(north zone)



CONTOUR INTERVAL 10 FEET  
NORTH AMERICAN VERTICAL DATUM OF 1988  
This map was produced to conform with version 0.5.10  
of the USGS US Topo Product Standard.  
A metadata file associated with this product is draft version 0.5.16



QUADRANGLE LOCATION

Floral	Pleasant Plains	Huff
Pangborn	Steprock	Veget Ridge
Letona	Jackson	Bald Knob

STEPROCK, AR  
2011

ADJOINING 7.5 QUADRANGLES