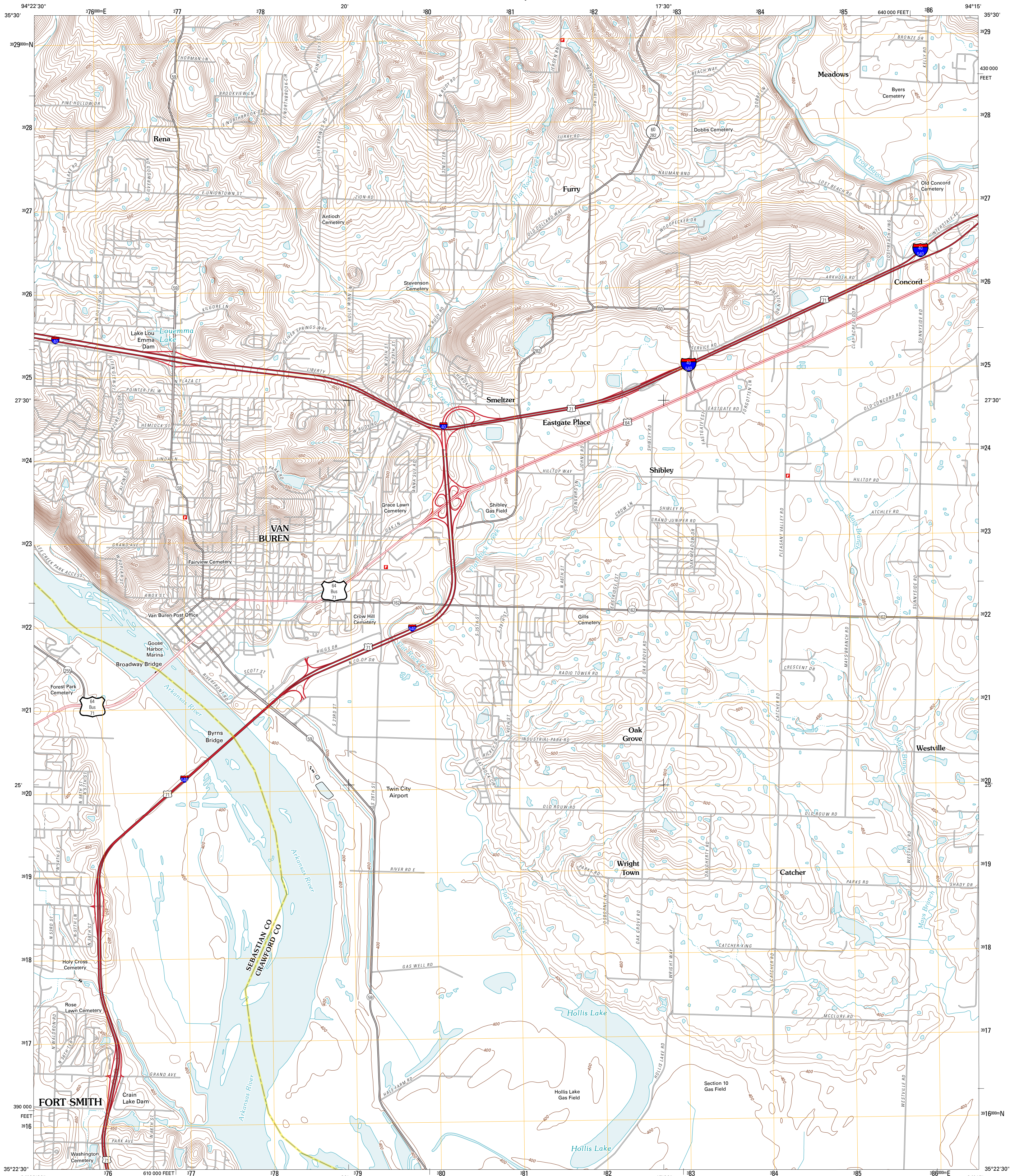




U.S. DEPARTMENT OF THE INTERIOR
U. S. GEOLOGICAL SURVEY



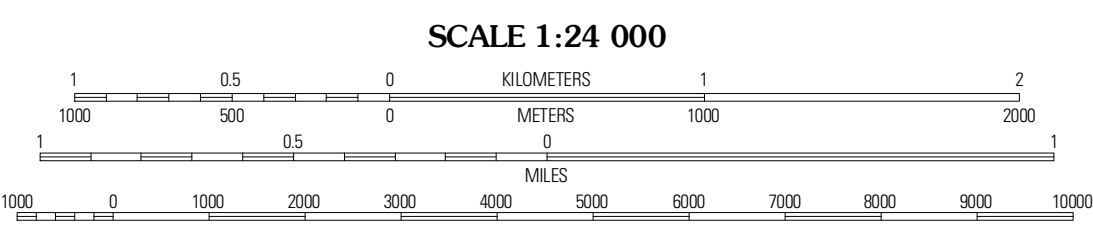
VAN BUREN QUADRANGLE
ARKANSAS
7.5-MINUTE SERIES



Produced by the United States Geological Survey
North American Datum of 1983 (NAD83)
World Geodetic System of 1984 (WGS84). Projection and
1 000-foot ticks: Arkansas Coordinate System of 1983
(north zone)

UTM GRID AND 2011 MAGNETIC NORTH
DECLINATION AT CENTER OF SHEET

U.S. National Grid
100,000-m Square ID
UV
Grid Zone Designation
15S



CONTOUR INTERVAL 10 FEET
NORTH AMERICAN VERTICAL DATUM OF 1988

This map was produced to conform with version 0.5.10
of the USGS US Topo Product Standard.
A metadata file associated with this product is draft version 0.5.16



QUADRANGLE LOCATION

Uniontown	Ruby	Mountainburg
Fort Smith	Van Buren	Alma
South Fort Smith	Barling	Lawson

ADJOINING 7.5 QUADRANGLES

ROAD CLASSIFICATION

- Interstate Route
- US Route
- Ramp
- State Route
- Local Road
- 4WD

VAN BUREN, AR
2011