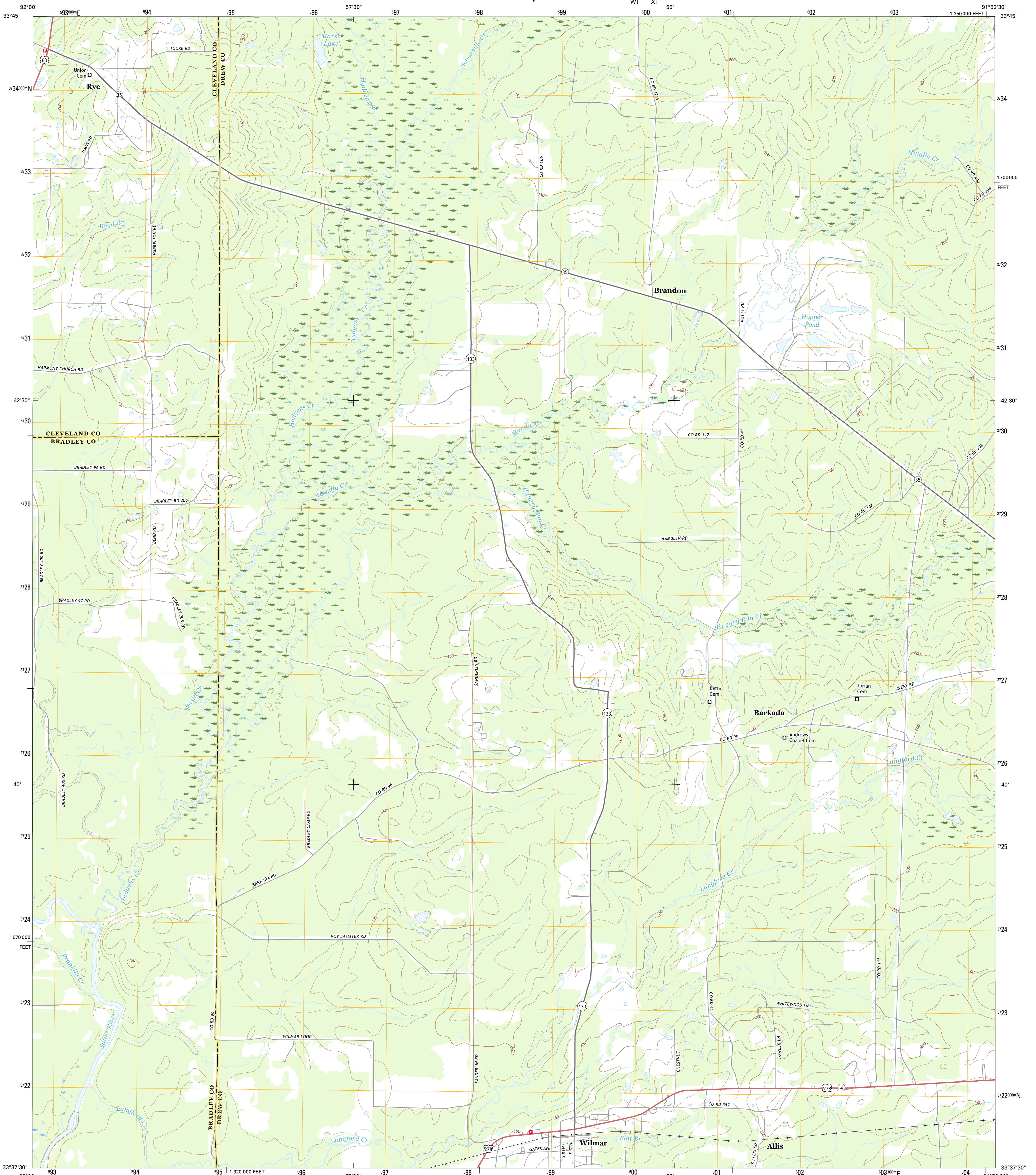




U.S. DEPARTMENT OF THE INTERIOR
U.S. GEOLOGICAL SURVEY



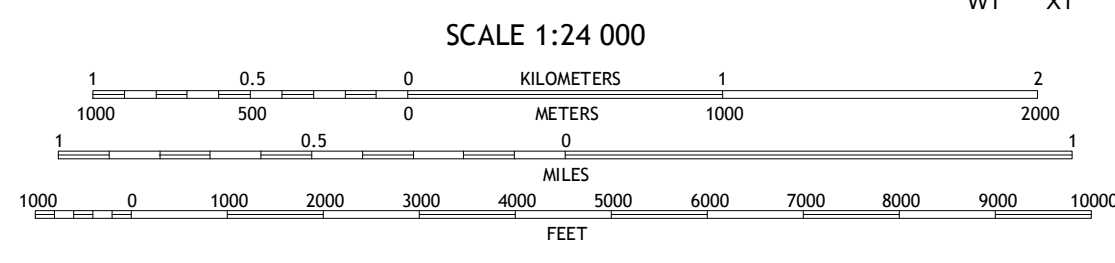
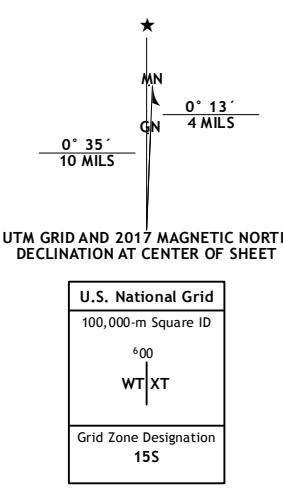
WILMAR NORTH QUADRANGLE
ARKANSAS
7.5-MINUTE SERIES



Produced by the United States Geological Survey
North American Datum of 1983 (NAD83)
World Geodetic System of 1984 (WGS84). Projection and
1 000-meter grid: Universal Transverse Mercator, Zone 15S
10 000-foot ticks: Arkansas Coordinate System of 1983 (south
zone)

This map is not a legal document. Boundaries may be
generalized for this map scale. Private lands within government
reservations may not be shown. Obtain permission before
entering private lands.

Imagery:.....NAIP, December 2015
Roads:.....U.S. Census Bureau, 2015
Names:.....GNIS, 2016
Hydrography:.....National Hydrography Dataset, 2015
Contours:.....National Elevation Dataset, 2003
Boundaries:.....Multiple sources; see metadata file 1972-2016
Public Land Survey System:.....BLM, 2015
Wetlands:.....FWS National Wetlands Inventory 1977-2014



CONTOUR INTERVAL 10 FEET
NORTH AMERICAN VERTICAL DATUM OF 1988

This map was produced to conform with the
National Geospatial Program US Topo Product Standard, 2011.
A metadata file associated with this product is draft version 0.6.19



ROAD CLASSIFICATION

Expressway	Local Connector
Secondary Hwy	Local Road
Ramp	4WD
Interstate Route	US Route
	State Route

ADJOINING QUADRANGLES

1	2	3
4	5	6
7	8	

1 Herbine
2 Cornerville
3 Reis Bluff
4 Warren NE
5 Monticello North
6 Warren
7 Wilmar South
8 Monticello South

WILMAR NORTH, AR
2017

