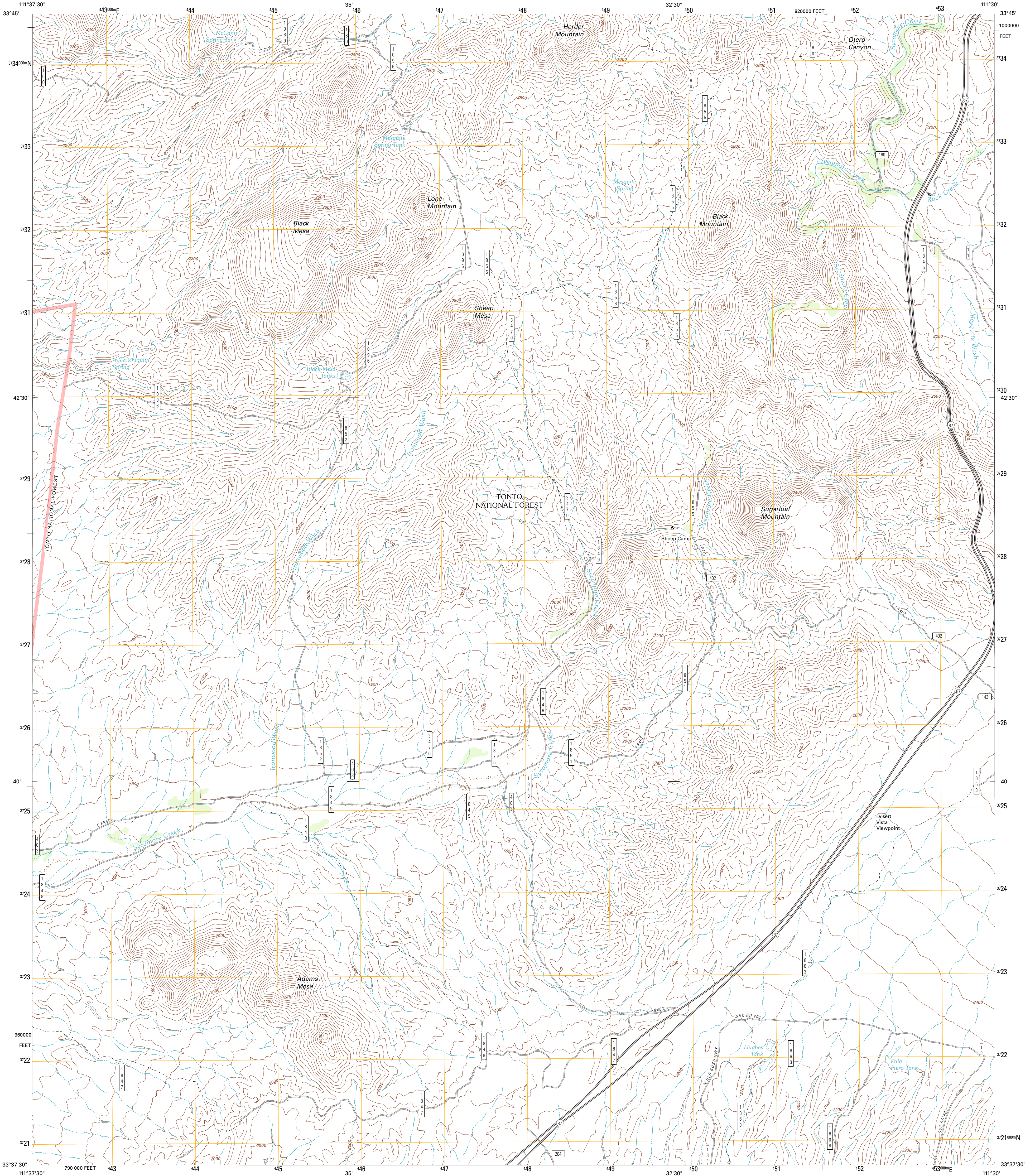




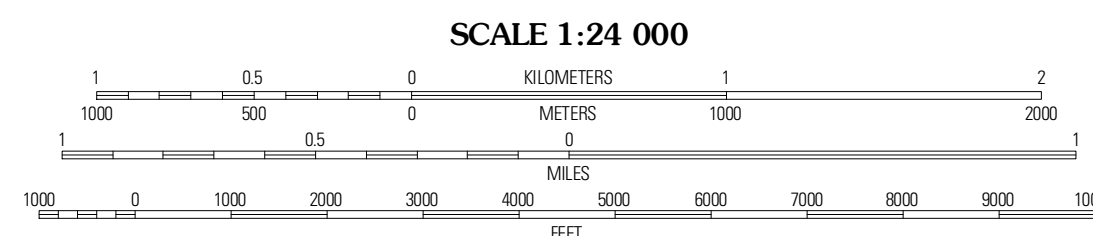
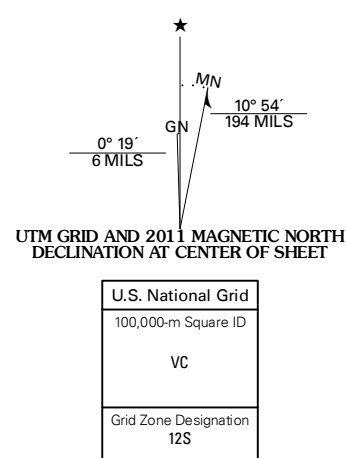
U.S. DEPARTMENT OF THE INTERIOR
U. S. GEOLOGICAL SURVEY



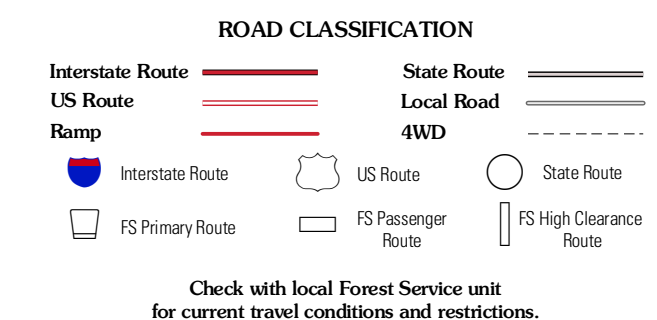
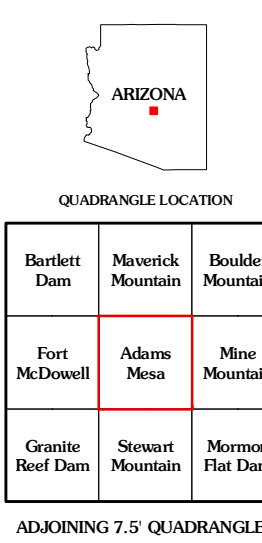
ADAMS MESA QUADRANGLE
ARIZONA-MARICOPA CO.
7.5-MINUTE SERIES



Produced by the United States Geological Survey
North American Datum of 1983 (NAD83)
World Geodetic System of 1984 (WGS84) Projection and
1 000-meter grid; Universal Transverse Mercator, Zone 12S
10 000-foot ticks; Arizona Coordinate System of 1983
(central zone)



CONTOUR INTERVAL 40 FEET
NORTH AMERICAN VERTICAL DATUM OF 1988
This map was produced to conform with the
National Geospatial Program US Topo Product Standard, 2011.
A metadata file associated with this product is draft version 0.6.1



Imagery.....NAP, August 2010 - September 2010
Roads.....©2006-2011 TomTom
Roads within US Forest Service Lands.....FS Topo Data
with Limited Forest Service updates, 2009
Names.....GNS, 2011
Hydrography.....National Hydrography Dataset, 2007
Contours.....National Elevation Dataset, 2003
Boundaries.....Census, IBWC, IBC, USGS, 1972 - 2010

U.S. National Grid
100,000-m Square ID
VC
Grid Zone Designation
12S

Bartlett Dam	Maverick Mountain	Boulder Mountain
Fort McDowell	Adams Mesa	Mine Mountain
Granite Reef Dam	Stewart Mountain	Mormon Flat Dam

ADAMS MESA, AZ
2011

ADJOINING 7.5 QUADRANGLES