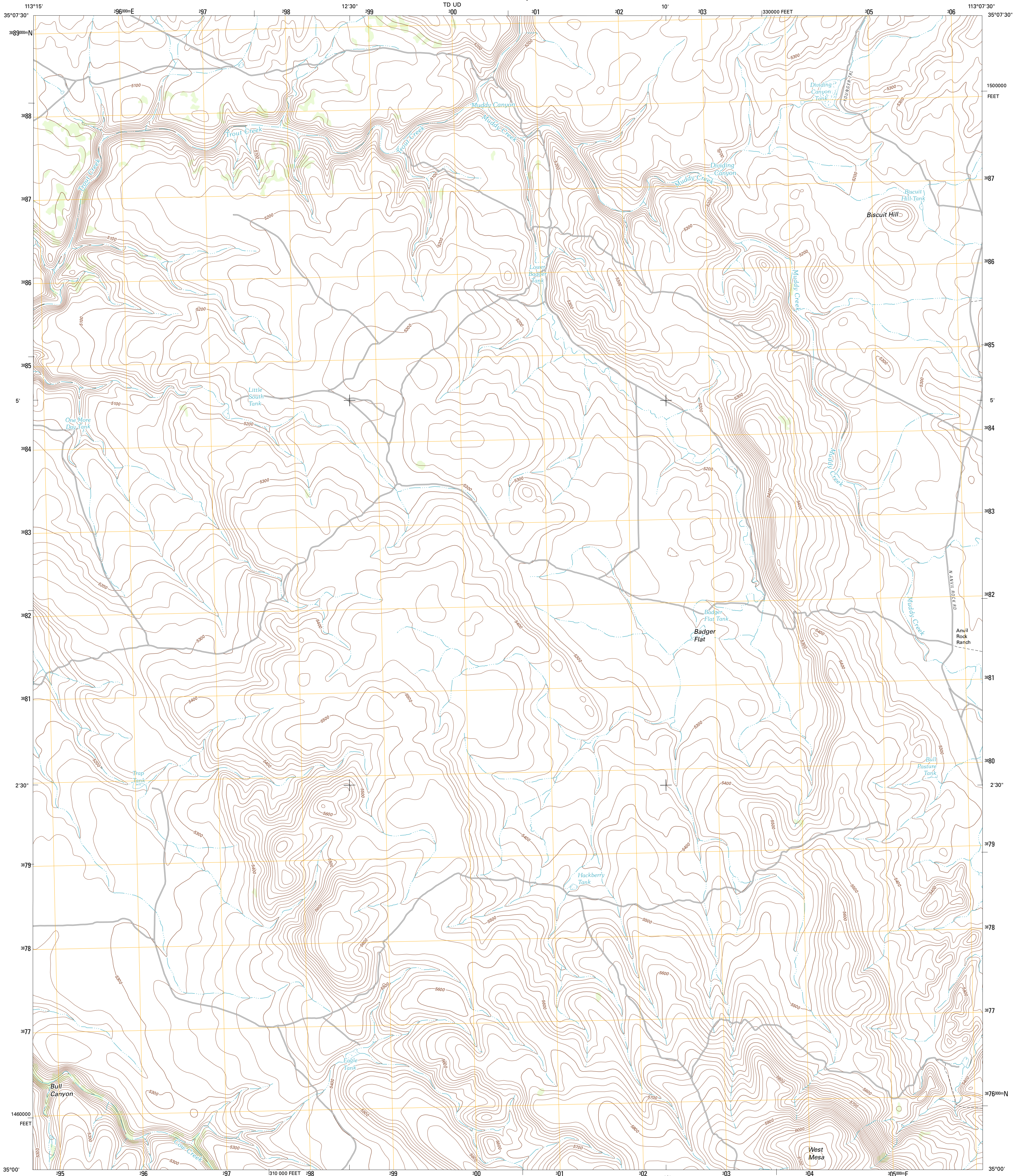




U.S. DEPARTMENT OF THE INTERIOR  
U. S. GEOLOGICAL SURVEY

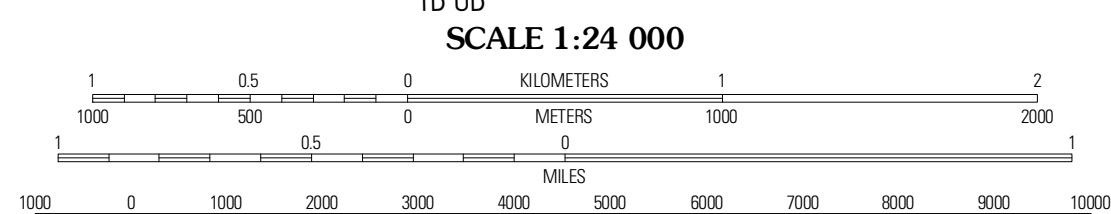
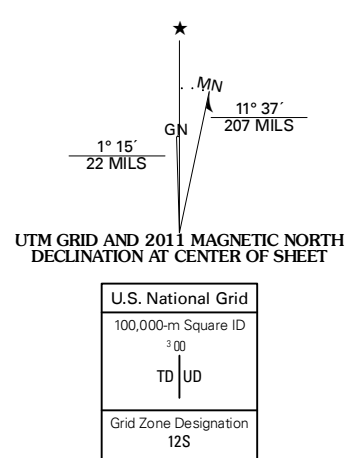


ANVIL ROCK RANCH QUADRANGLE  
ARIZONA-YAVAPAI CO.  
7.5-MINUTE SERIES



Produced by the United States Geological Survey  
North American Datum of 1983 (NAD83)  
Roads.....©2006-2011 TerraTom  
World Geospatial System of 1984 (WGS84). Projection and  
1 000-meter grid. Universal Transverse Mercator, Zone 12S  
10 000-foot ticks: Arizona Coordinate System of 1983  
(central zone)

Imagery.....NAIP, July 2010  
Roads.....©2006-2011 TerraTom  
Names.....GNIS, 2011  
Hydrography.....National Hydrography Dataset, 2007  
Contours.....National Elevation Dataset, 2002  
Boundaries.....Census, IBWC, IBC, USGS, 1972 - 2010



SCALE 1:24 000  
CONTOUR INTERVAL 20 FEET  
NORTH AMERICAN VERTICAL DATUM OF 1988

This map was produced to conform with the  
National Geospatial Program US Topo Product Standard, 2011.  
A metadata file associated with this product is draft version 0.6.1



ROAD CLASSIFICATION

- Interstate Route
- US Route
- Ramp
- State Route
- Local Road
- 4WD

QUADRANGLE LOCATION

|                 |                  |            |
|-----------------|------------------|------------|
| Fort Rock Ranch | Cross Mountain   | Squaw Peak |
| Devils Hump     | Anvil Rock Ranch | Anvil Rock |
| Mohon Peak      | Sunrise Peak     | Mount Hope |

ADJOINING 7.5' QUADRANGLES

ANVIL ROCK RANCH, AZ  
2011