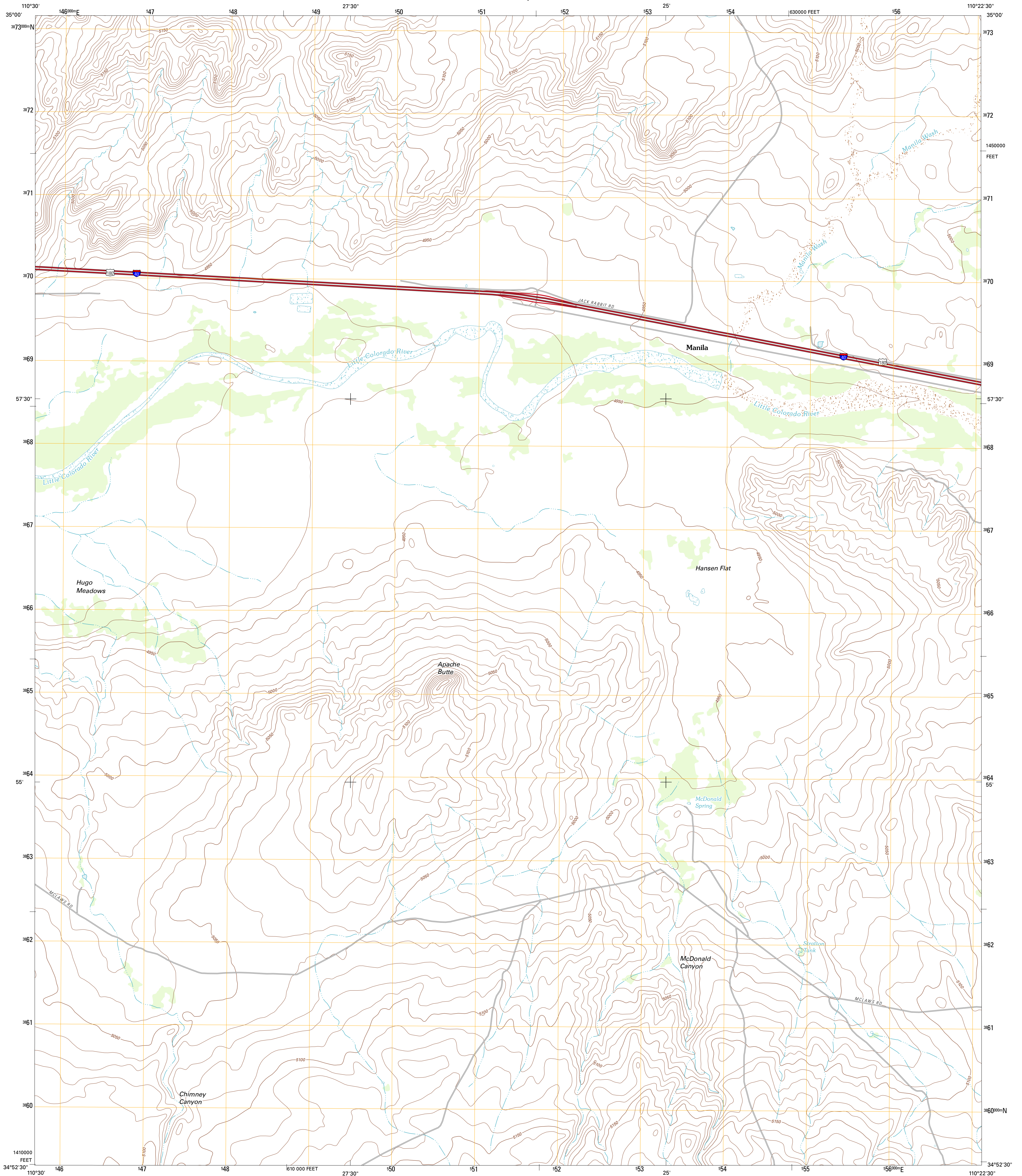




U.S. DEPARTMENT OF THE INTERIOR  
U. S. GEOLOGICAL SURVEY

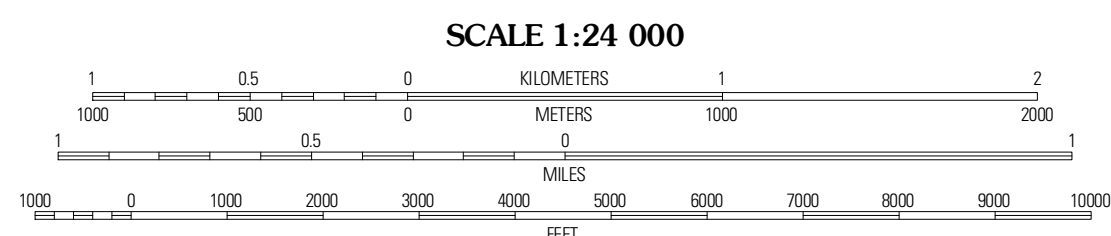
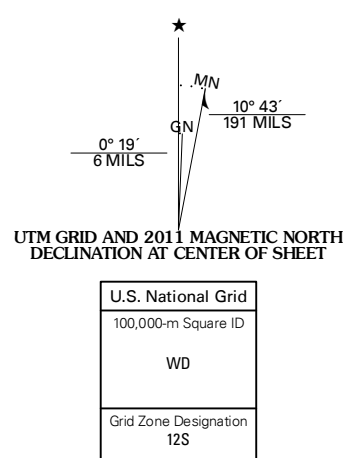


APACHE BUTTE QUADRANGLE  
ARIZONA-NAVAJO CO.  
7.5-MINUTE SERIES



Produced by the United States Geological Survey  
North American Datum of 1983 (NAD83)  
World Geodetic System of 1984 (WGS84). Projection and  
1 000-meter grid: Universal Transverse Mercator, Zone 12S  
10 000-foot ticks: Arizona Coordinate System of 1983 (east  
zone)

Imagery: NIP, June 2010  
Roads: 2006-2011 TomTom  
Names: GNIS, 2011  
Hydrography: National Hydrography Dataset, 2007  
Contours: National Elevation Dataset, 1999  
Boundaries: Census, IBWC, IBC, USGS, 1972 - 2010



CONTOUR INTERVAL 10 FEET  
NORTH AMERICAN VERTICAL DATUM OF 1988

This map was produced to conform with the  
National Geospatial Program US Topo Product Standard, 2011.  
A metadata file associated with this product is draft version 0.6.1



QUADRANGLE LOCATION

Rincon Ranch	Humpy Camp Well	Blair Spring
Hibbard	Apache Butte	Joseph City
McCauley Sinks	Chimney Canyon	Saunders Draw

ADJOINING 7.5 QUADRANGLES

ROAD CLASSIFICATION

Interstate Route	State Route
US Route	Local Road
Ramp	4WD

Interstate Route US Route State Route

APACHE BUTTE, AZ  
2011