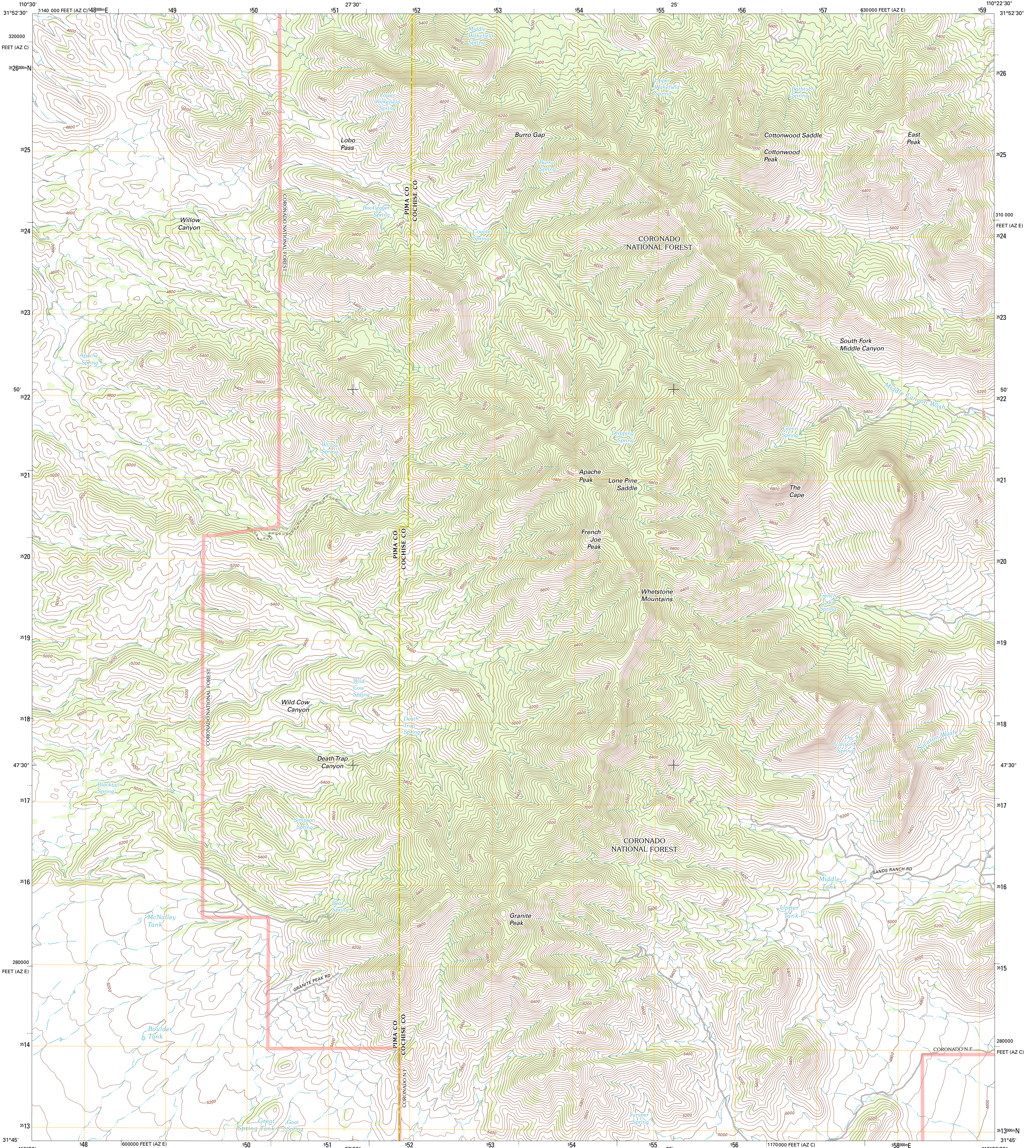




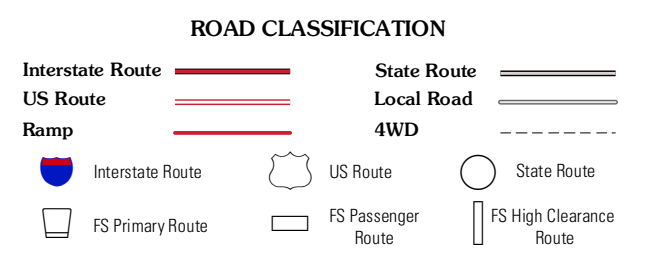
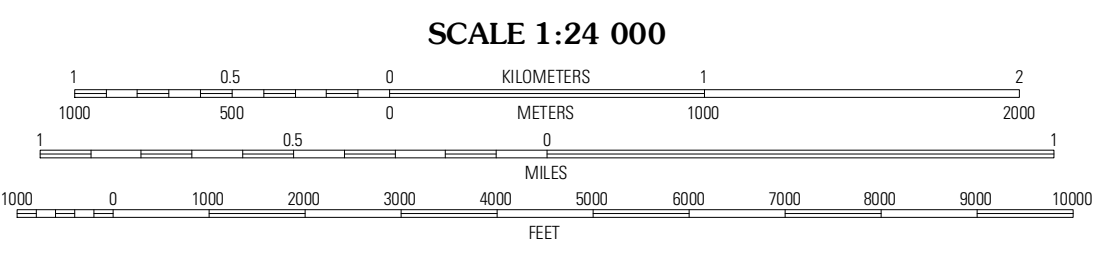
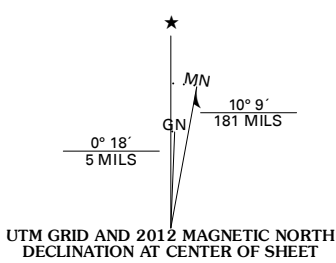
U.S. DEPARTMENT OF THE INTERIOR
U. S. GEOLOGICAL SURVEY



APACHE PEAK QUADRANGLE
ARIZONA
7.5-MINUTE SERIES



Produced by the United States Geological Survey
North American Datum of 1983 (NAD83)
World Geodetic System of 1984 (WGS84), Projection and
1 000-meter grid: Universal Transverse Mercator, Zone 12R
10 000-foot ticks: Arizona Coordinate System of 1983 (east
and central zones)



QUADRANGLE LOCATION

The Narrows	Mescal	Benson
Spring Wagon Canyon	Apache Peak	McGrew Spring
Elgin	Mustang Mountains	Huachuca City

Imagery.....NAP, June 2010
Roads.....5/2006-2011 TomTom
Roads within US Forest Service Lands.....FSTopo Data
with limited Forest Service updates, 2009
Names.....GNIS, 2011
Hydrography.....National Hydrography Dataset, 2010
Contours.....National Elevation Dataset, 2003
Boundaries.....Census, IBWC, IBC, USGS, 1972 - 2010

U.S. National Grid
100,000-m Square ID

WA
Grid Zone Designation 12R

CONTOUR INTERVAL 40 FEET
NORTH AMERICAN VERTICAL DATUM OF 1988
This map was produced to conform with the
National Geospatial Program US Topo Product Standard, 2011.
A metadata file associated with this product is draft version 0.6.1

Check with local Forest Service unit
for current travel conditions and restrictions.

APACHE PEAK, AZ
2012

ADJOINING 7.5 QUADRANGLES