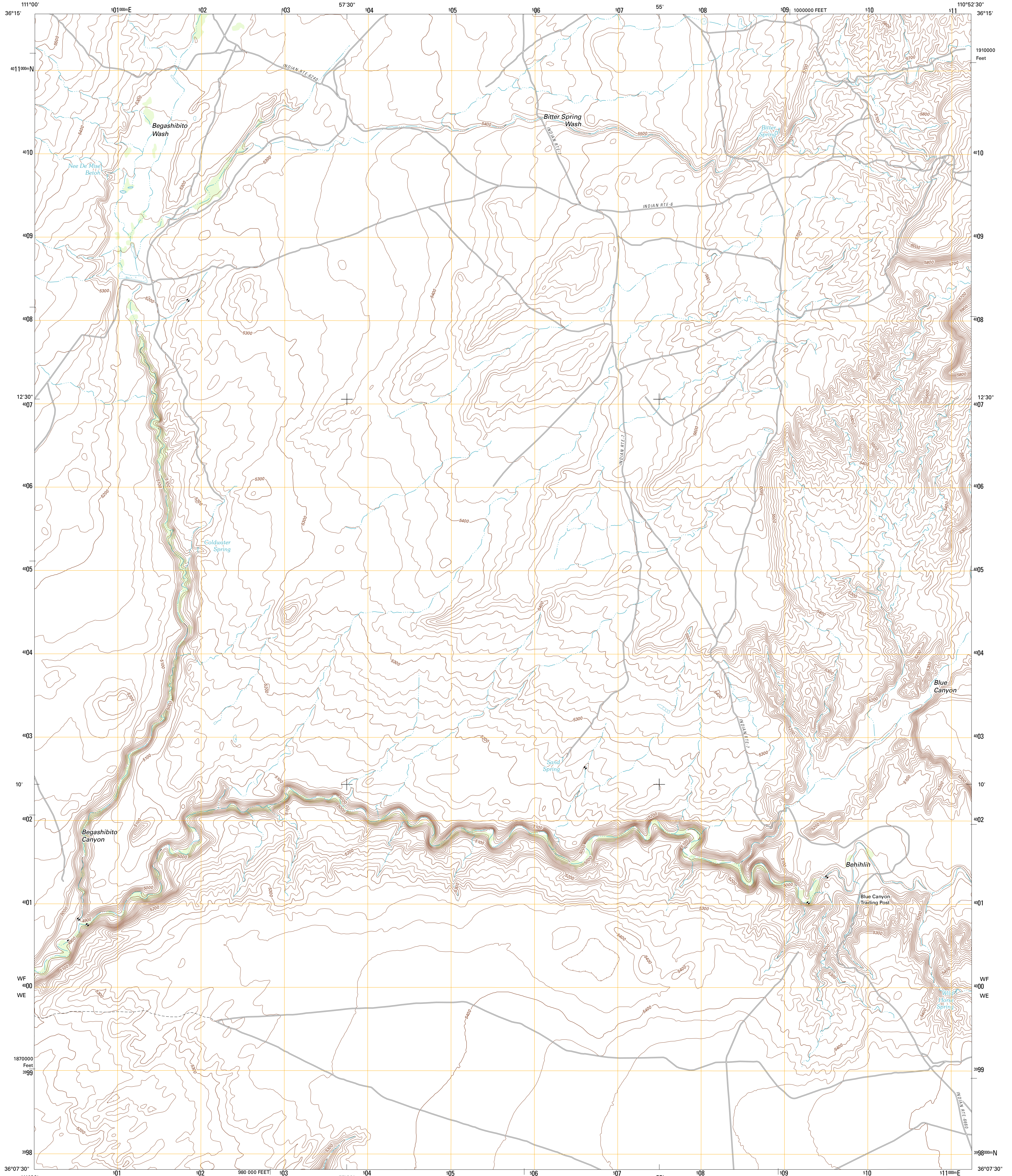




U.S. DEPARTMENT OF THE INTERIOR  
U. S. GEOLOGICAL SURVEY



BEGASHIBITO CANYON QUADRANGLE  
ARIZONA-COCONINO CO.  
7.5-MINUTE SERIES



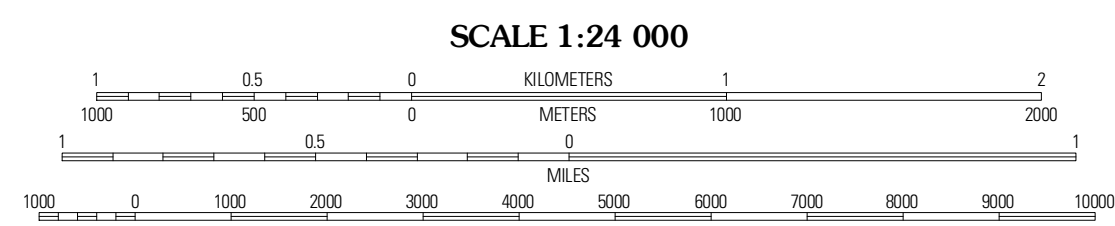
Produced by the United States Geological Survey  
North American Datum of 1983 (NAD83)  
World Geodetic System of 1984 (WGS84), Projection and  
1 000-meter grid: Universal Transverse Mercator, Zone 12S  
10 000-foot ticks: Arizona Coordinate System of 1983  
(central zone)

Imagery: N/AIP, June 2010  
Roads: 2006-2011 TomTom  
Names: GNS, 2011  
Hydrography: National Hydrography Dataset, 2007  
Contours: National Elevation Dataset, 1999  
Boundaries: Census, IBWC, IBC, USGS, 1972-2010

UTM GRID AND 2011 MAGNETIC NORTH DECLINATION AT CENTER OF SHEET

U.S. National Grid  
100,000-m Square ID  
WF #00  
WE #00  
Grid Zone Designation  
12S

8° 2' 11" N  
11° 5' 19" W  
197 MILS



CONTOUR INTERVAL 20 FEET  
NORTH AMERICAN VERTICAL DATUM OF 1988

This map was produced to conform with the  
National Geospatial Program US Topo Product Standard, 2011.  
A metadata file associated with this product is draft version 0.6.1

ROAD CLASSIFICATION

Interstate Route (thick red line)  
US Route (red line)  
Ramp (red line with blue triangle)

State Route (thin red line)  
Local Road (black line)  
4WD (dashed black line)

QUADRANGLE LOCATION

Gopher Spring	Tonaka	John Daw Mesa
Middle Mesa	Begashibito Canyon	Pillars of Hercules
Tuba City SE	Bit Canyon	Bit Spring

BEGASHIBITO CANYON, AZ  
2011

ADJOINING 7.5' QUADRANGLES