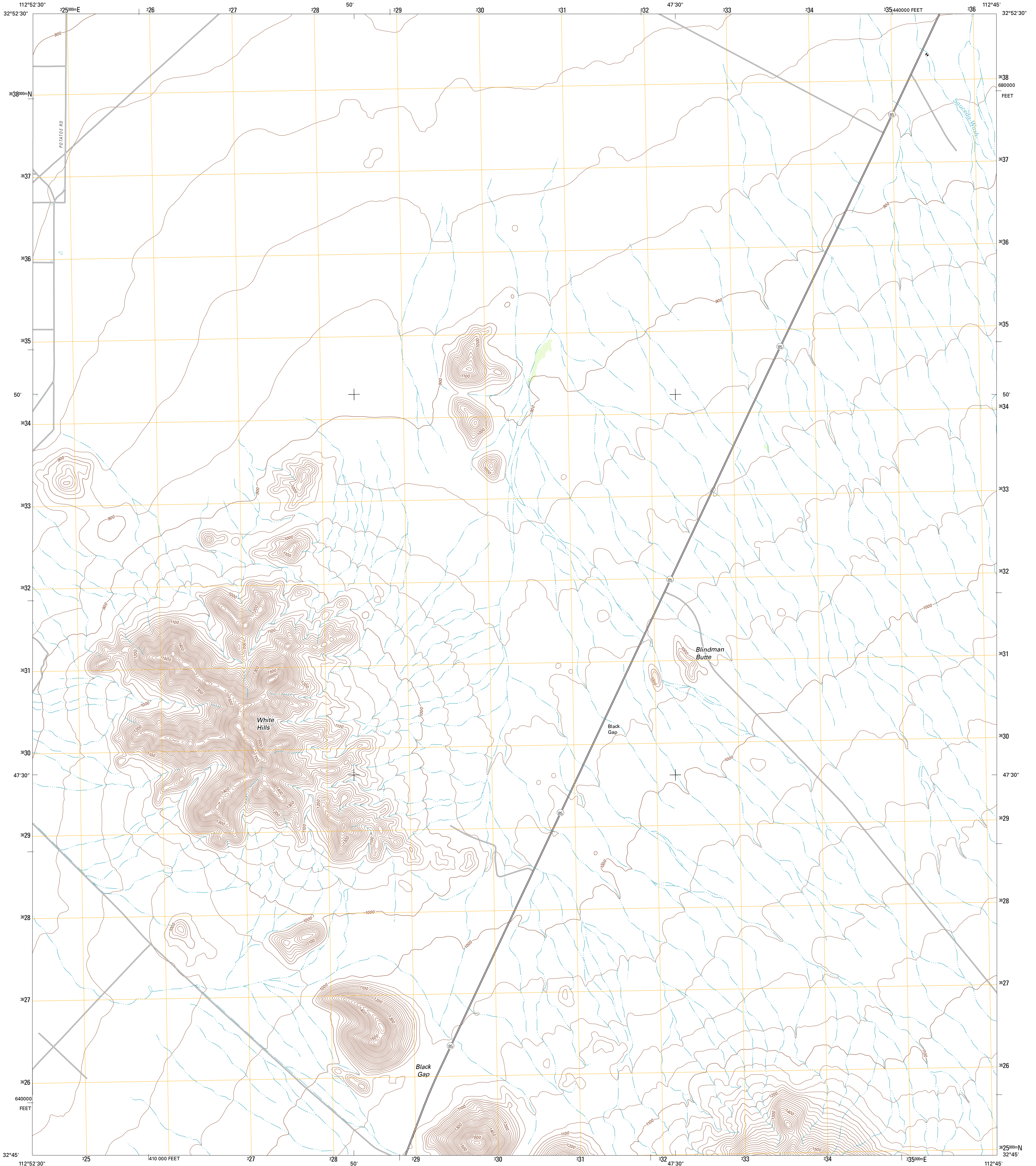




U.S. DEPARTMENT OF THE INTERIOR  
U. S. GEOLOGICAL SURVEY

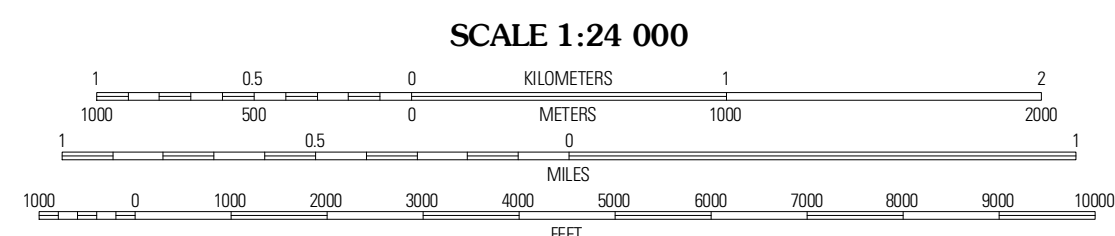
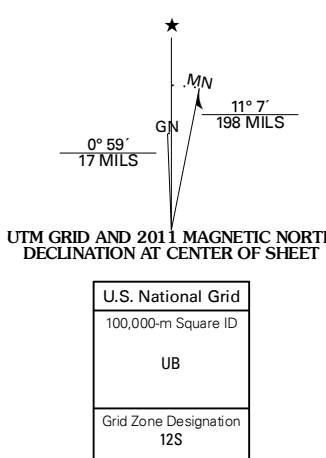


BLACK GAP QUADRANGLE  
ARIZONA-MARICOPA CO.  
7.5-MINUTE SERIES



Produced by the United States Geological Survey  
North American Datum of 1983 (NAD83)  
World Geodetic System of 1984 (WGS84). Projection and  
10 000-foot ticks: Arizona Coordinate System of 1983  
(central zone)

Imagery.....NAIP, July 2010  
Roads.....©2006-2011 TomTom  
Names.....GNIS, 2011  
Hydrography.....National Hydrography Dataset, 2007  
Contours.....National Elevation Dataset, 2003  
Boundaries.....Census, IBWC, IBC, USGS, 1972 - 2010



CONTOUR INTERVAL 20 FEET  
NORTH AMERICAN VERTICAL DATUM OF 1988

This map was produced to conform with the  
National Geospatial Program US Topo Product Standard, 2011.  
A metadata file associated with this product is draft version 0.6.1



QUADRANGLE LOCATION

Thaba	Smurr	Gila Bend
South of Thaba	Black Gap	South of Gila Bend
Midway NW	Midway	Hat Mountain

ROAD CLASSIFICATION

Interstate Route	State Route
US Route	Local Road
Ramp	4WD

BLACK GAP, AZ  
2011

ADJOINING 7.5' QUADRANGLES