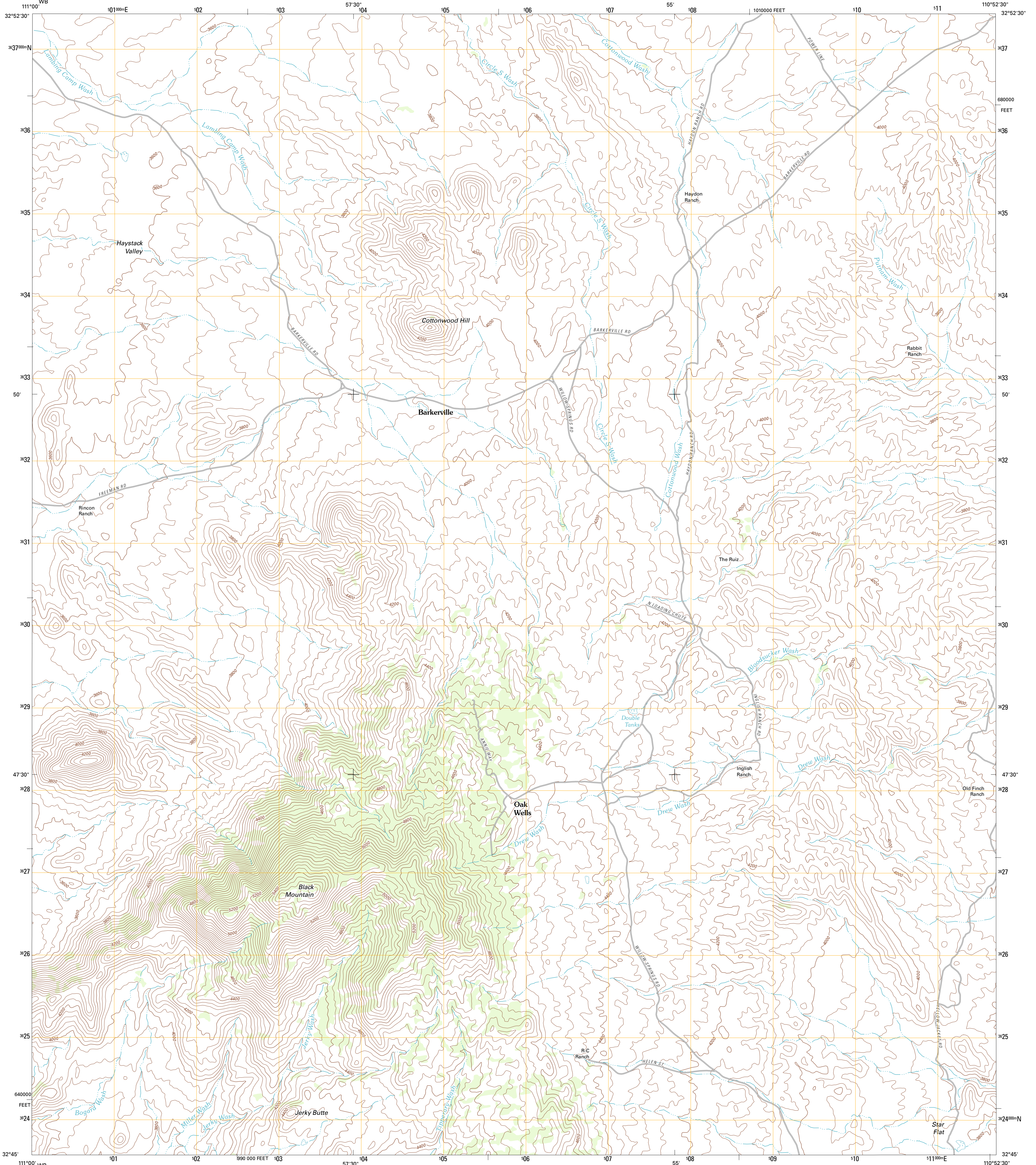




U.S. DEPARTMENT OF THE INTERIOR
U. S. GEOLOGICAL SURVEY

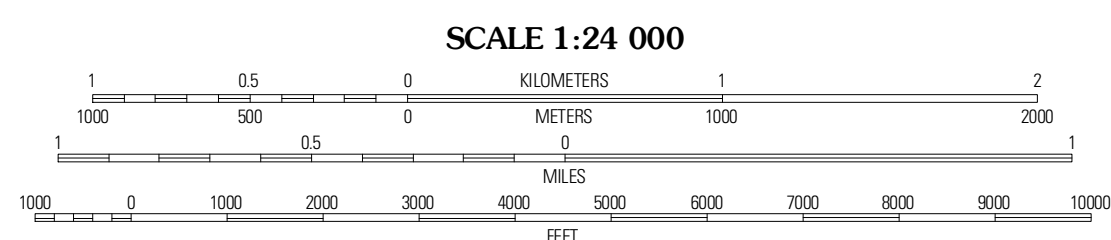
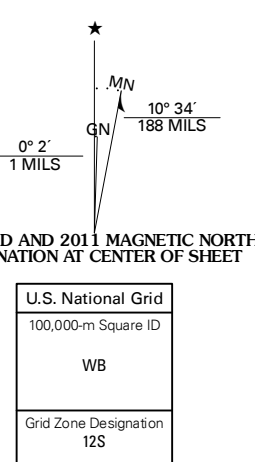


BLACK MOUNTAIN QUADRANGLE
ARIZONA-PINAL CO.
7.5-MINUTE SERIES



Produced by the United States Geological Survey
North American Datum of 1983 (NAD83)
World Geodetic System of 1984 (WGS84). Projection and
1 000-meter grid: Universal Transverse Mercator, Zone 12S
(10 000-foot ticks: Arizona Coordinate System of 1983
(central zone))

Imagery.....NAP, September 2010
Roads.....6/2006-2011 TomTom
Names.....GNIS, 2011
Hydrography.....National Hydrography Dataset, 2007
Contours.....National Elevation Dataset, 2003
Boundaries.....Census, IBWC, IBC, USGS, 1972 - 2010



CONTOUR INTERVAL 40 FEET
NORTH AMERICAN VERTICAL DATUM OF 1988

This map was produced to conform with the
National Geospatial Program US Topo Product Standard, 2011.
A metadata file associated with this product is draft version 0.6.1



ROAD CLASSIFICATION

Interstate Route

US Route

Ramp

State Route

Local Road

4WD

QUADRANGLE LOCATION

Ninety-six Hills NE	Crozier Peak	Winkelman
Ninety-six Hills SE	Black Mountain	Putnam Wash
Chief Butte	Fortified Peak	North of Oracle

BLACK MOUNTAIN, AZ
2011

ADJOINING 7.5 QUADRANGLES