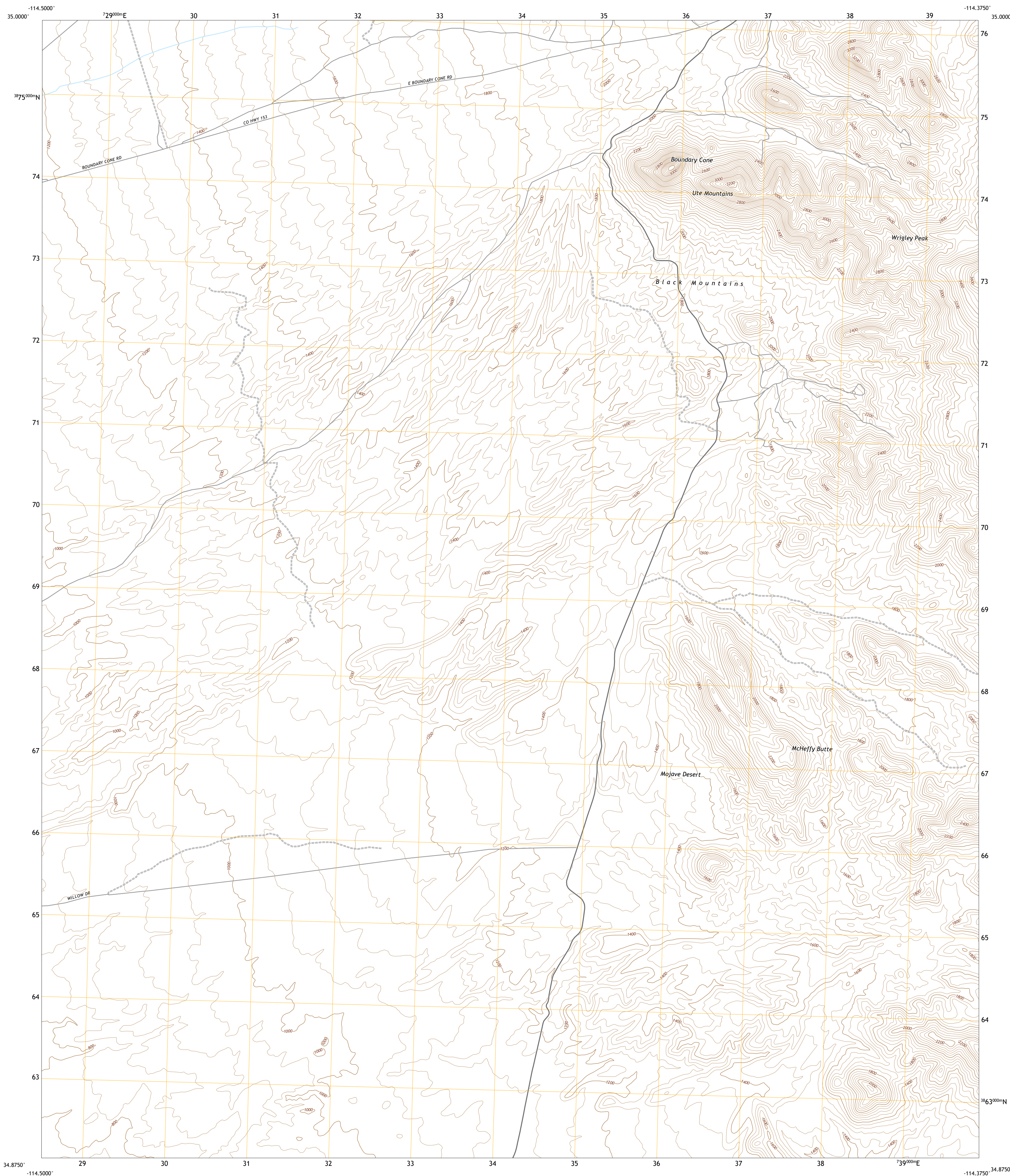




U.S. DEPARTMENT OF THE INTERIOR
U.S. GEOLOGICAL SURVEY



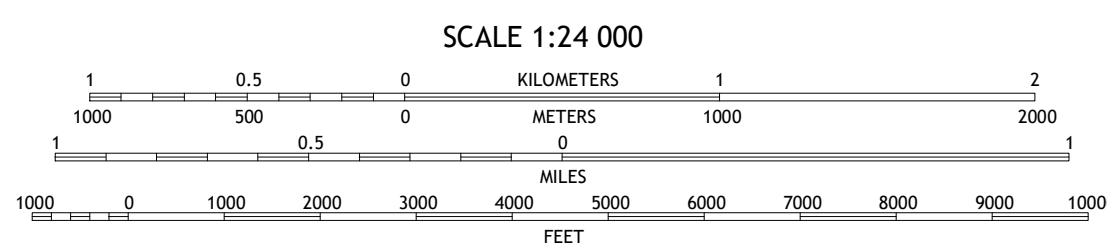
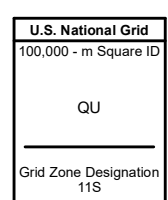
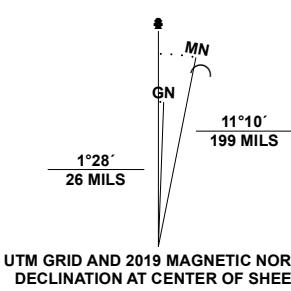
BOUNDARY CONE QUADRANGLE
ARIZONA - MOHAVE COUNTY
7.5-MINUTE SERIES



Produced by the United States Geological Survey

North American Datum of 1983 (NAD83)
World Geodetic System of 1984 (WGS84), Projection and
1 000-meter grid/Universal Transverse Mercator, Zone 11S
This map is not a legal document. Boundaries may be
generalized for this map scale. Private lands within government
reservations may not be shown. Obtain permission before
entering private lands.

Imagery.....N.A.I.P., June 2019 - June 2019
Roads.....U.S. Census Bureau, 2016 - 2018
Names.....GNS, 1980 - 2018
Hydrography.....National Hydrography Dataset, 2004 - 2019
Contours.....National Elevation Dataset, 2002
Boundaries.....Multiple sources: see metadata file 2019 - 2021
Public Land Survey System.....BLM, 2017
Wetlands.....FWS National Wetlands Inventory Not Available



CONTOUR INTERVAL 40 FEET
NORTH AMERICAN VERTICAL DATUM OF 1988
This map was produced to conform with the
National Geospatial Program US Topo Product Standard.



ADJOINING QUADRANGLES

1	2	3
4	5	6
7	8	

- 1 Davis Dam SE
- 2 Oatman
- 3 Mount Nutt
- 4 Needles NE
- 5 Warm Springs
- 6 Needles
- 7 Warm Springs SW
- 8 Warm Springs SE

ROAD CLASSIFICATION

Expressway	Local Connector	
Secondary Hwy	Local Road	
Ramp	4WD	
Interstate Route	US Route	State Route

BOUNDARY CONE, AZ
2021

