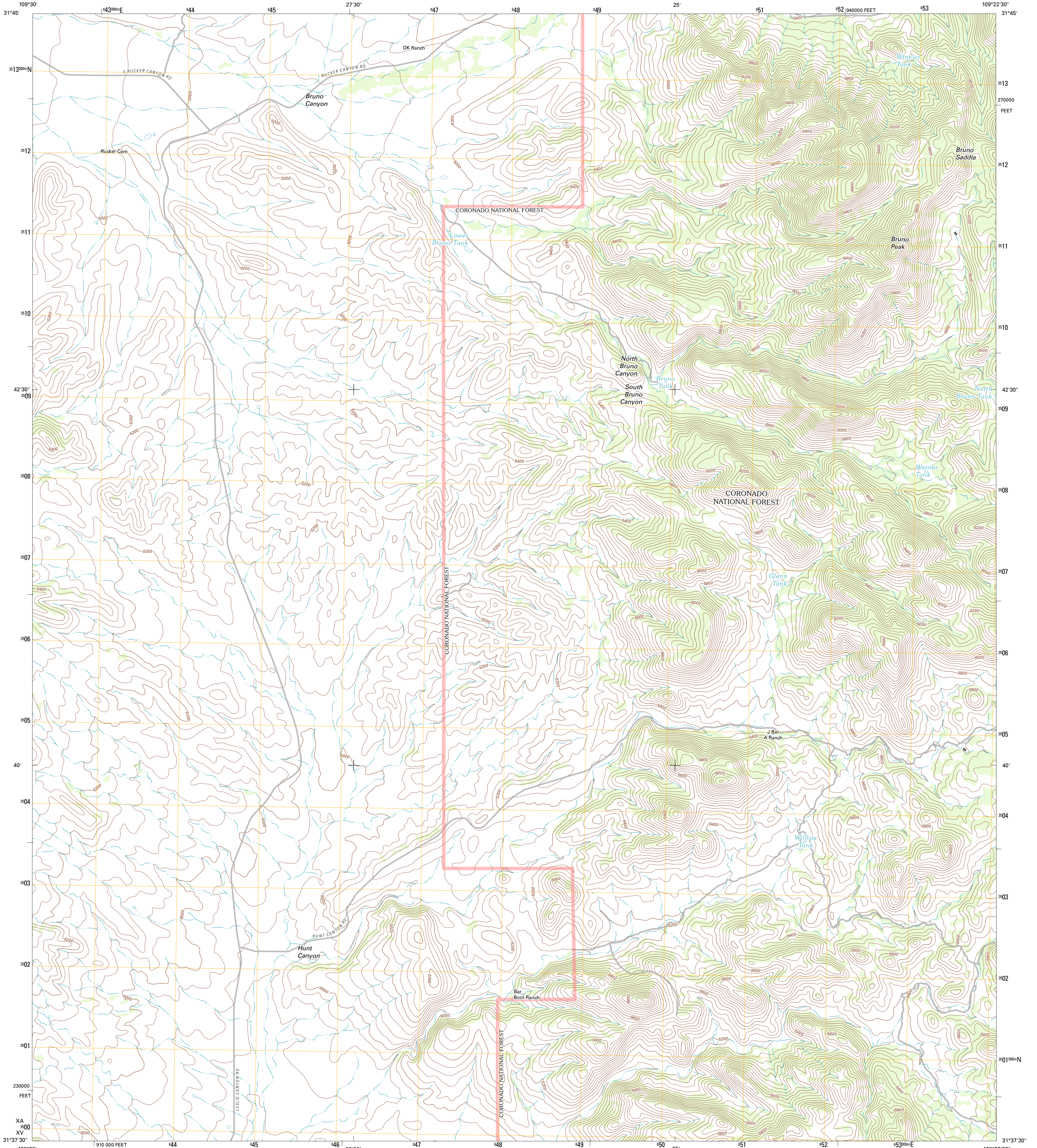




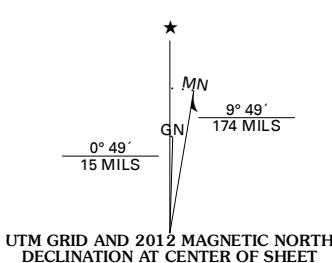
U.S. DEPARTMENT OF THE INTERIOR  
U. S. GEOLOGICAL SURVEY



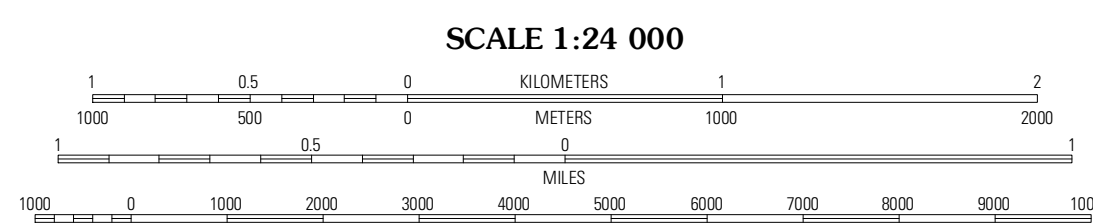
BRUNO PEAK QUADRANGLE  
ARIZONA-COCHISE CO.  
7.5-MINUTE SERIES



Produced by the United States Geological Survey  
North American Datum of 1983 (NAD83)  
World Geodetic System of 1984 (WGS84). Projection and  
1 000-meter grid: Universal Transverse Mercator, Zone 12R  
10 000-foot ticks: Arizona Coordinate System of 1983 (east  
zone)



U.S. National Grid
100,000m Square ID
XA XV
Grid Zone Designation
12R



CONTOUR INTERVAL 40 FEET  
NORTH AMERICAN VERTICAL DATUM OF 1988

This map was produced to conform with the  
National Geospatial Program US Topo Product Standard, 2011.  
A metadata file associated with this product is draft version 0.6.1



QUADRANGLE LOCATION

Squaretop Hills East	Stanford Canyon	Chiricahua Peak
Swishelm Mountain	Bruno Peak	Suede Peak
Leslie Canyon	Pedregosa Mountains West	Pedregosa Mountains East

**ROAD CLASSIFICATION**

Interstate Route	State Route
US Route	Local Road
Ramp	4WD
FS Primary Route	FS Passenger Route
	FS High Clearance Route

Check with local Forest Service unit for current travel conditions and restrictions.

BRUNO PEAK, AZ  
2012

ADJOINING 7.5 QUADRANGLES