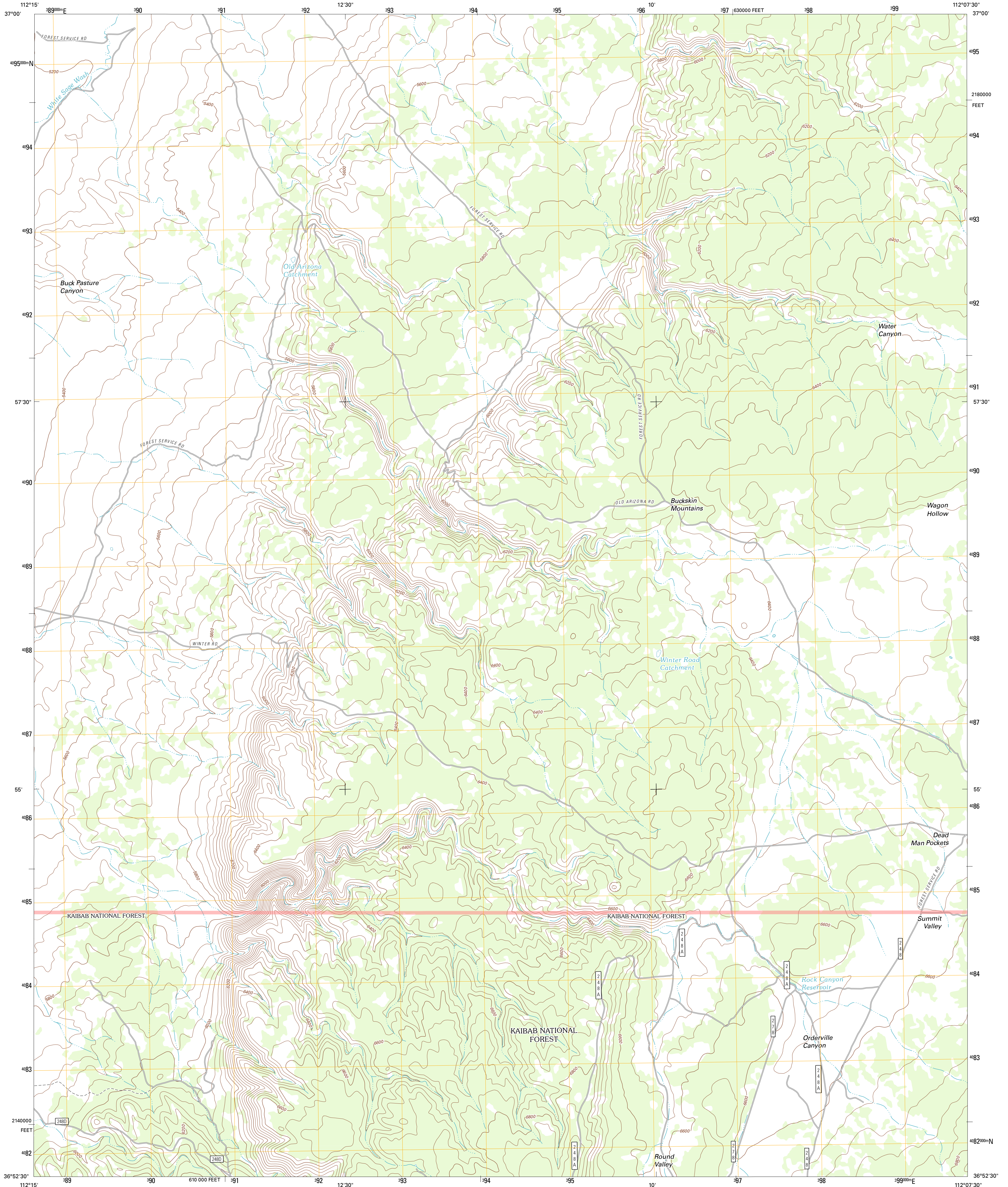




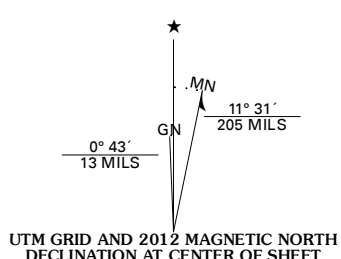
U.S. DEPARTMENT OF THE INTERIOR
U. S. GEOLOGICAL SURVEY



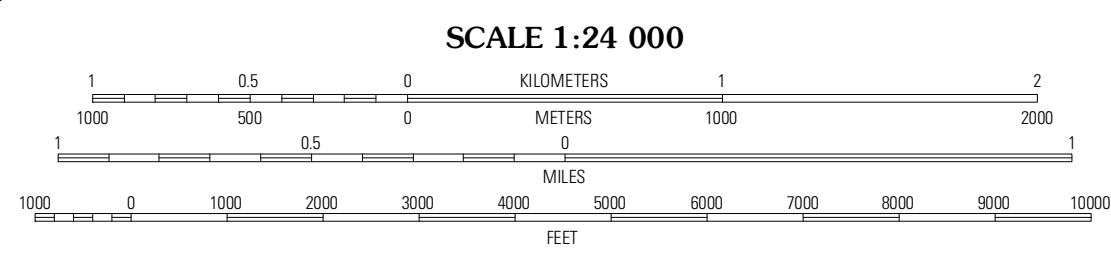
BUCK PASTURE CANYON QUADRANGLE
ARIZONA-COCONINO CO.
7.5-MINUTE SERIES



Produced by the United States Geological Survey
North American Datum of 1983 (NAD83)
World Geodetic System of 1984 (WGS84) Projection and
1 000-meter grid: Universal Transverse Mercator, Zone 12S
10 000-foot ticks: Arizona Coordinate System of 1983
(central zone)



U.S. National Grid
100 000-m Square ID
UF
Grid Zone Designation
12S



CONTOUR INTERVAL 40 FEET
NORTH AMERICAN VERTICAL DATUM OF 1988
This map was produced to conform with the
National Geospatial Program US Topo Product Standard, 2011.
A metadata file associated with this product is draft version 0.6.1



QUADRANGLE LOCATION

Johnson Lakes	Perrill Hollow	Pine Hollow Canyon
Muggins Flat	Buck Pasture Canyon	Copote Buttes
Le Fevre Ridge	Cooper Ridge	House Rock Spring

ROAD CLASSIFICATION

Interstate Route	State Route
US Route	Local Road
Ramp	4WD

Interstate Route
 US Route
 State Route
 FS Primary Route
 FS Passenger Route
 FS High Clearance Route

Check with local Forest Service unit for current travel conditions and restrictions.

BUCK PASTURE CANYON, AZ
2012

ADJOINING 7.5' QUADRANGLES