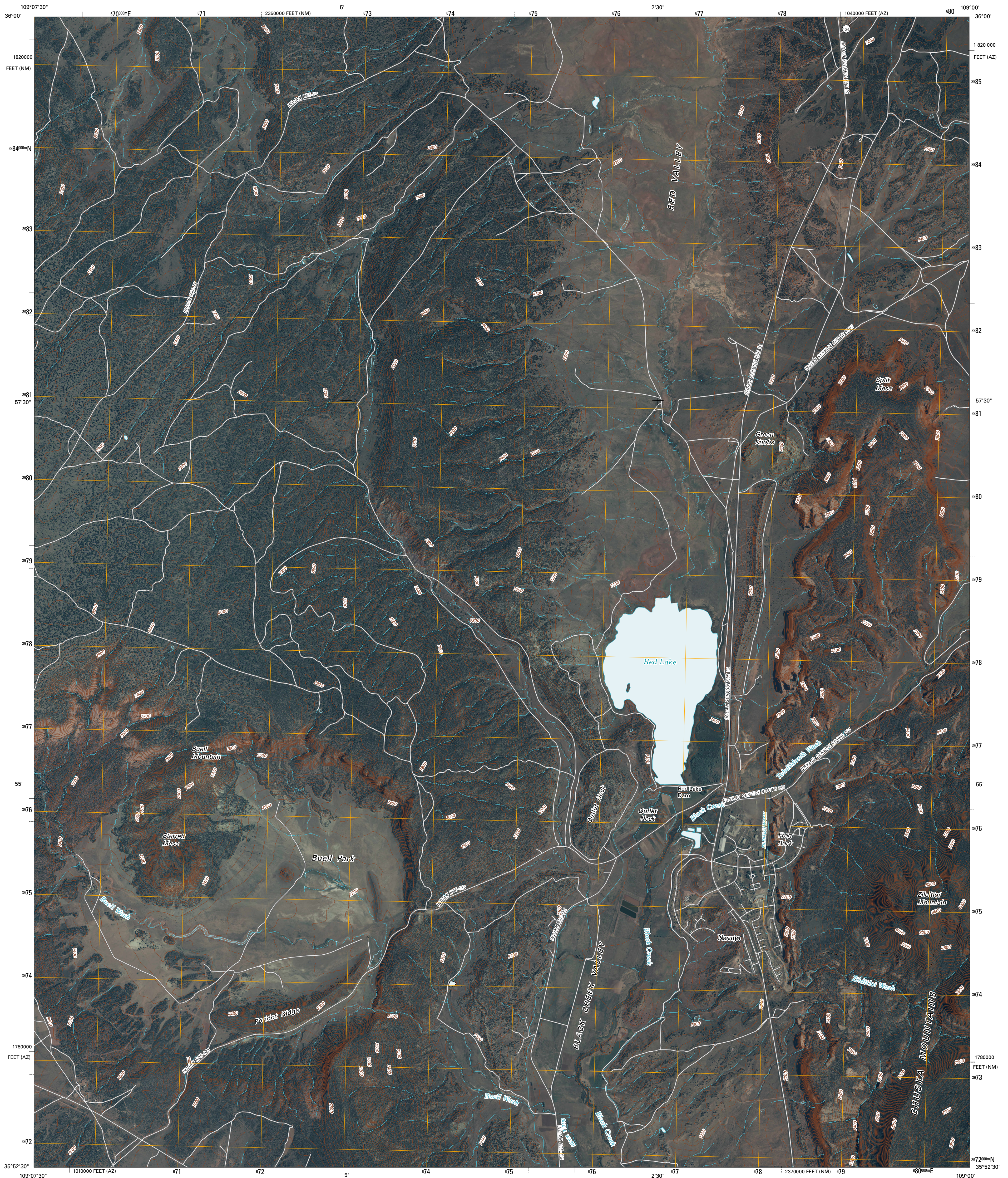




U.S. DEPARTMENT OF THE INTERIOR  
U. S. GEOLOGICAL SURVEY

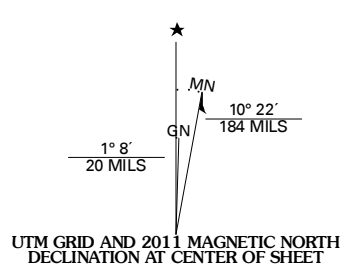


BUELL PARK QUADRANGLE  
ARIZONA-NEW MEXICO  
7.5-MINUTE SERIES

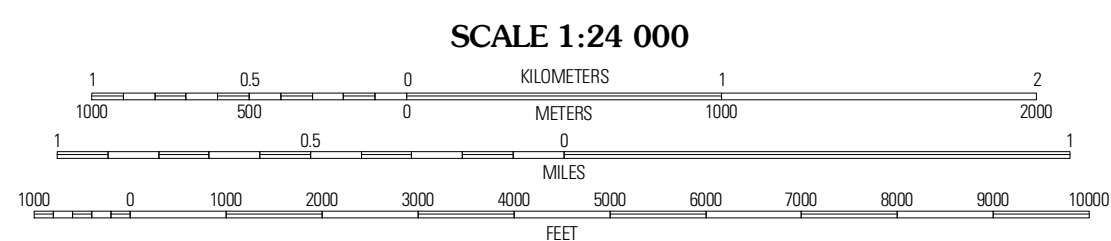


Produced by the United States Geological Survey  
North American Datum of 1983 (NAD83)  
World Geodetic System of 1984 (WGS84). Projection and  
1 000-meter grid: Universal Transverse Mercator, Zone 12S  
10 000-foot ticks: Arizona Coordinate System of 1983  
(east zone) and New Mexico Coordinate System of 1983  
(west zone)

Imagery.....NAIP, June 2007  
Roads.....62906-2010 Tele Atlas  
Names.....GNIS, 2009  
Hydrography.....National Hydrography Dataset, 2007  
Contours.....National Elevation Dataset, 1999



U.S. National Grid 100,000-m Square ID	XE
Grid Zone Designation	12S



SCALE 1:24 000

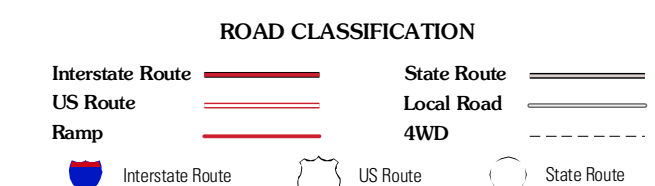
CONTOUR INTERVAL 20 FEET  
NORTH AMERICAN VERTICAL DATUM OF 1988

This map was produced to conform with version 0.5.10 of the  
draft USGS Standards for 7.5-Minute Quadrangle Maps.  
A metadata file associated with this product is draft version 0.5.11



QUADRANGLE LOCATION

White Clay	Sonsela Buttes	Crystal
Soumill	Buell Park	Todillo Park
Phony Hill	Fort Defiance	Crescent Canyon



BUELL PARK, AZ-NM  
2011