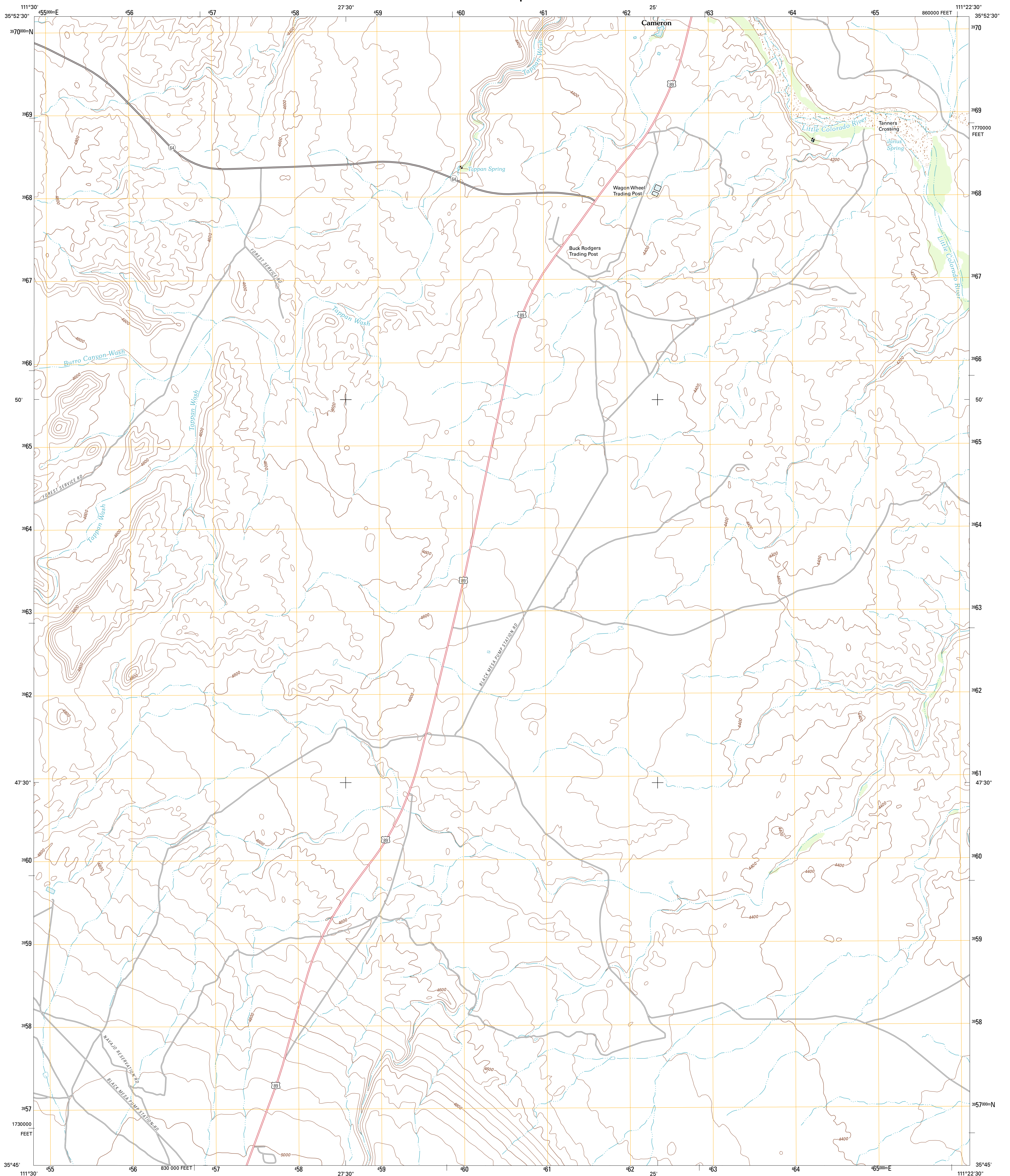




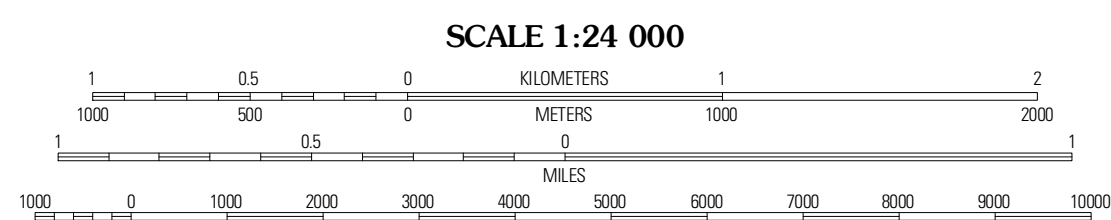
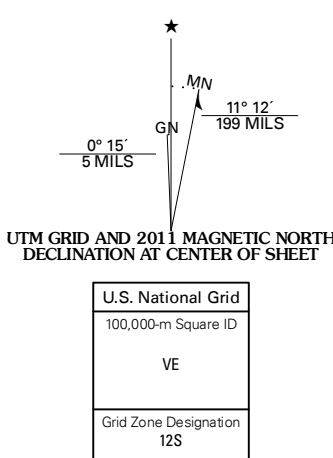
U.S. DEPARTMENT OF THE INTERIOR
U. S. GEOLOGICAL SURVEY



CAMERON SOUTH QUADRANGLE
ARIZONA-COCONINO CO.
7.5-MINUTE SERIES

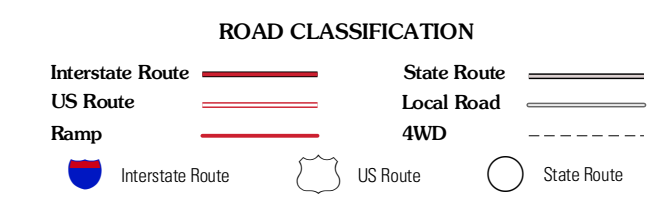


Produced by the United States Geological Survey
North American Datum of 1983 (NAD83)
World Geodetic System of 1984 (WGS84) Projection and
1 000-meter grid: Universal Transverse Mercator, Zone 12S
10 000-foot ticks: Arizona Coordinate System of 1983
(central zone)



CONTOUR INTERVAL 40 FEET
NORTH AMERICAN VERTICAL DATUM OF 1988

This map was produced to conform with the
National Geospatial Program US Topo Product Standard, 2011.
A metadata file associated with this product is draft version 0.6.1



QUADRANGLE LOCATION

Coconino Point	Cameron North	Cameron NE
Coconino Point SE	Cameron South	Cameron SE
Campbell Francis Wash	Gray Mountain	Wapaki NE

CAMERON SOUTH, AZ
2011

ADJOINING 7.5' QUADRANGLES