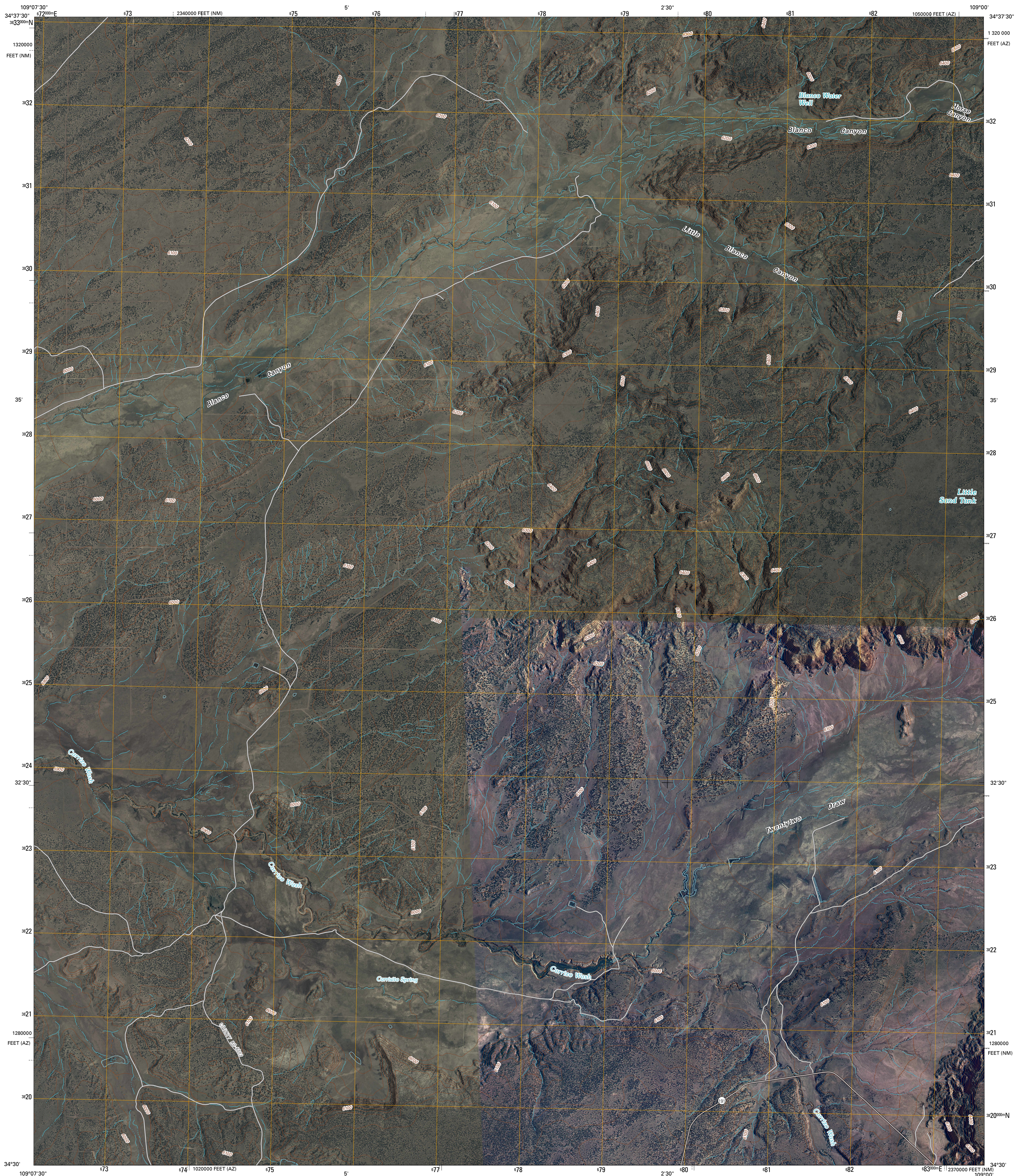




U.S. DEPARTMENT OF THE INTERIOR
U. S. GEOLOGICAL SURVEY

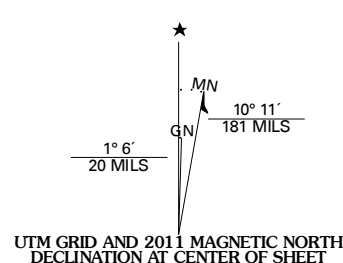


CARRISITO SPRING QUADRANGLE
ARIZONA-NEW MEXICO
7.5-MINUTE SERIES

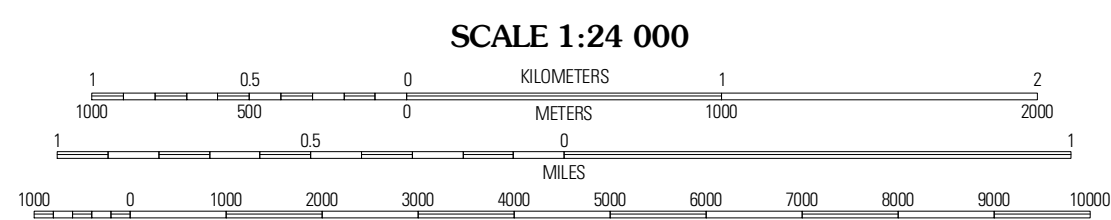


Produced by the United States Geological Survey
North American Datum of 1983 (NAD83)
Roads.....62906-2010 Tole Atlas
World Geodetic System of 1984 (WGS84). Projection and
1 000-foot grid: Universal Transverse Mercator, Zone 12S
10 000-foot ticks: Arizona Coordinate System of 1983
(east zone) and New Mexico Coordinate System of 1983
(west zone)

Imagery.....NAIP, June 2007
Roads.....62906-2010 Tole Atlas
Names.....GNIS, 2009
Hydrography.....National Hydrography Dataset, 2007
Contours.....National Elevation Dataset, 1999



U.S. National Grid	100,000m Square ID
	XD
Grid Zone Designation	12S

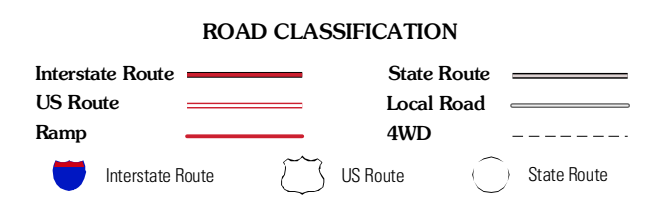


CONTOUR INTERVAL 20 FEET
NORTH AMERICAN VERTICAL DATUM OF 1988
This map was produced to conform with version 0.5.10 of the
draft USGS Standards for 7.5-Minute Quadrangle Maps.
A metadata file associated with this product is draft version 0.5.11



Valle Buelto	Valle Buelto NE	Cantamelo Spring
Kearns Lake	Carrisito Spring	Twentytwo Spring
Mesa Parada NW	Mesa Parada	Salazar Canyon

ADJOINING 7.5 QUADRANGLES



CARRISITO SPRING, AZ-NM
2011