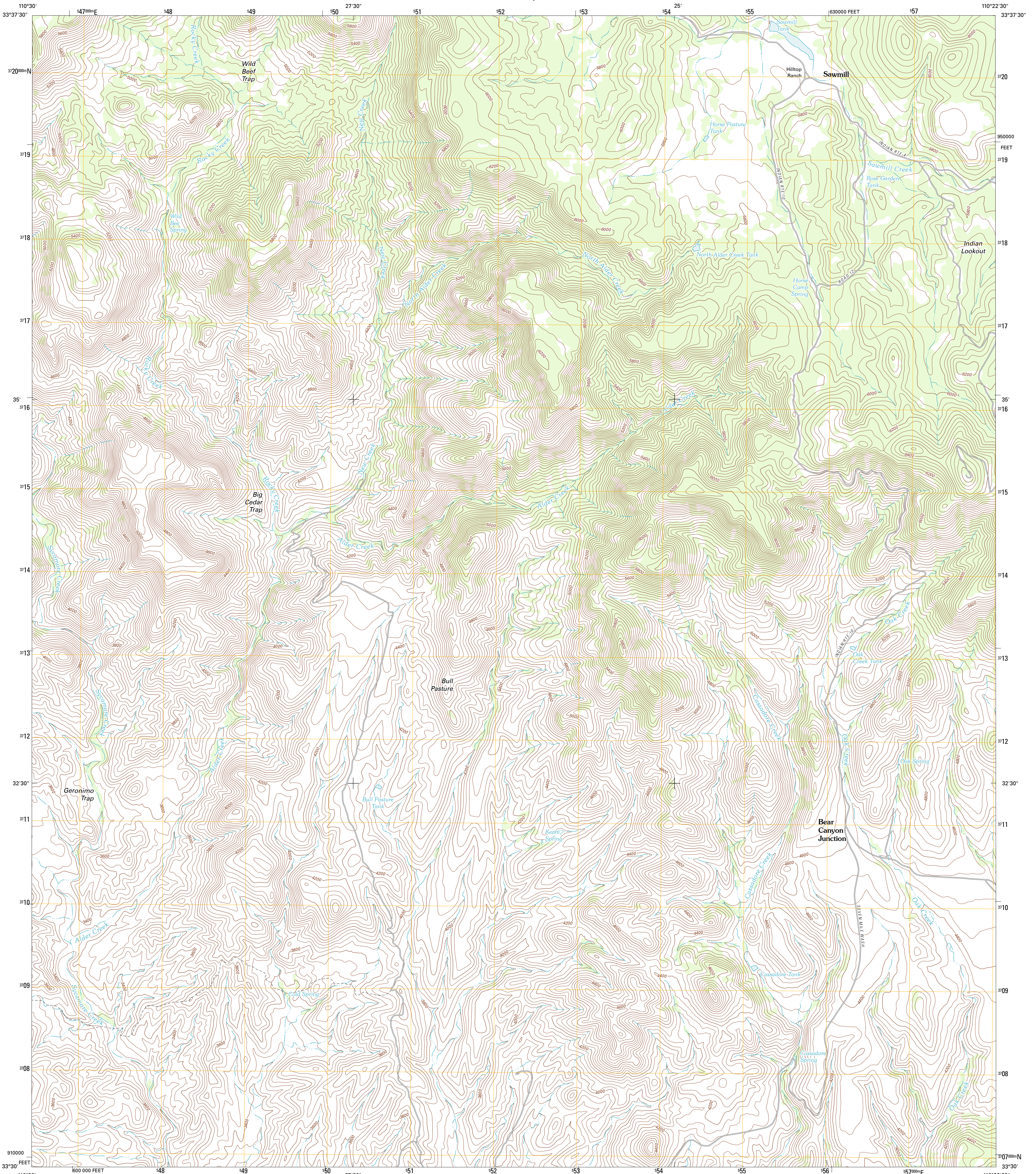




U.S. DEPARTMENT OF THE INTERIOR
U. S. GEOLOGICAL SURVEY

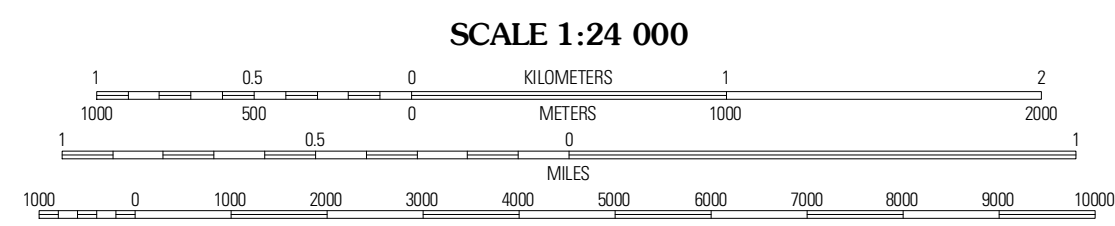
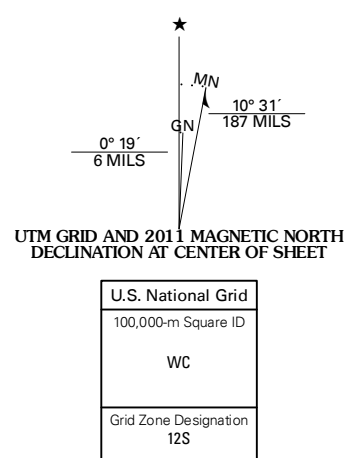


CASSADORE SPRING QUADRANGLE
ARIZONA-GILA CO.
7.5-MINUTE SERIES



Produced by the United States Geological Survey
North American Datum of 1983 (NAD83)
World Geodetic System of 1984 (WGS84) Projection and
1 000-meter grid: Universal Transverse Mercator, Zone 12S
10 000-foot ticks: Arizona Coordinate System of 1983 (east zone)

Imagery:.....NAIP, August 2010 - September 2010
Roads:.....1/2006-2011 TomTom
Names:.....GNIS, 2011
Hydrography:.....National Hydrography Dataset, 2007
Contours:.....National Elevation Dataset, 2002
Boundaries:.....Census, IBWC, IBC, USGS, 1972 - 2010



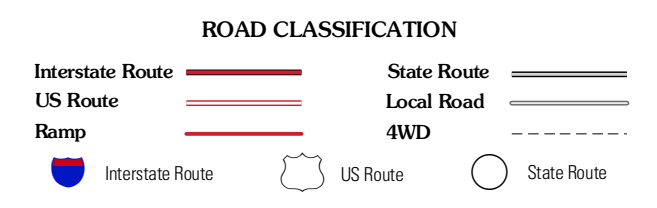
CONTOUR INTERVAL 40 FEET
NORTH AMERICAN VERTICAL DATUM OF 1988

This map was produced to conform with the National Geospatial Program US Topo Product Standard, 2011. A metadata file associated with this product is draft version 0.6.1



QUADRANGLE LOCATION

Chusville	Brushy Canyon	Popcorn Canyon
Sevensmile Mountains	Cassadore Spring	Sontag Creek
Dourine Canyon	Natural Corral	Sontag Mesa



CASSADORE SPRING, AZ
2011

ADJOINING 7.5 QUADRANGLES