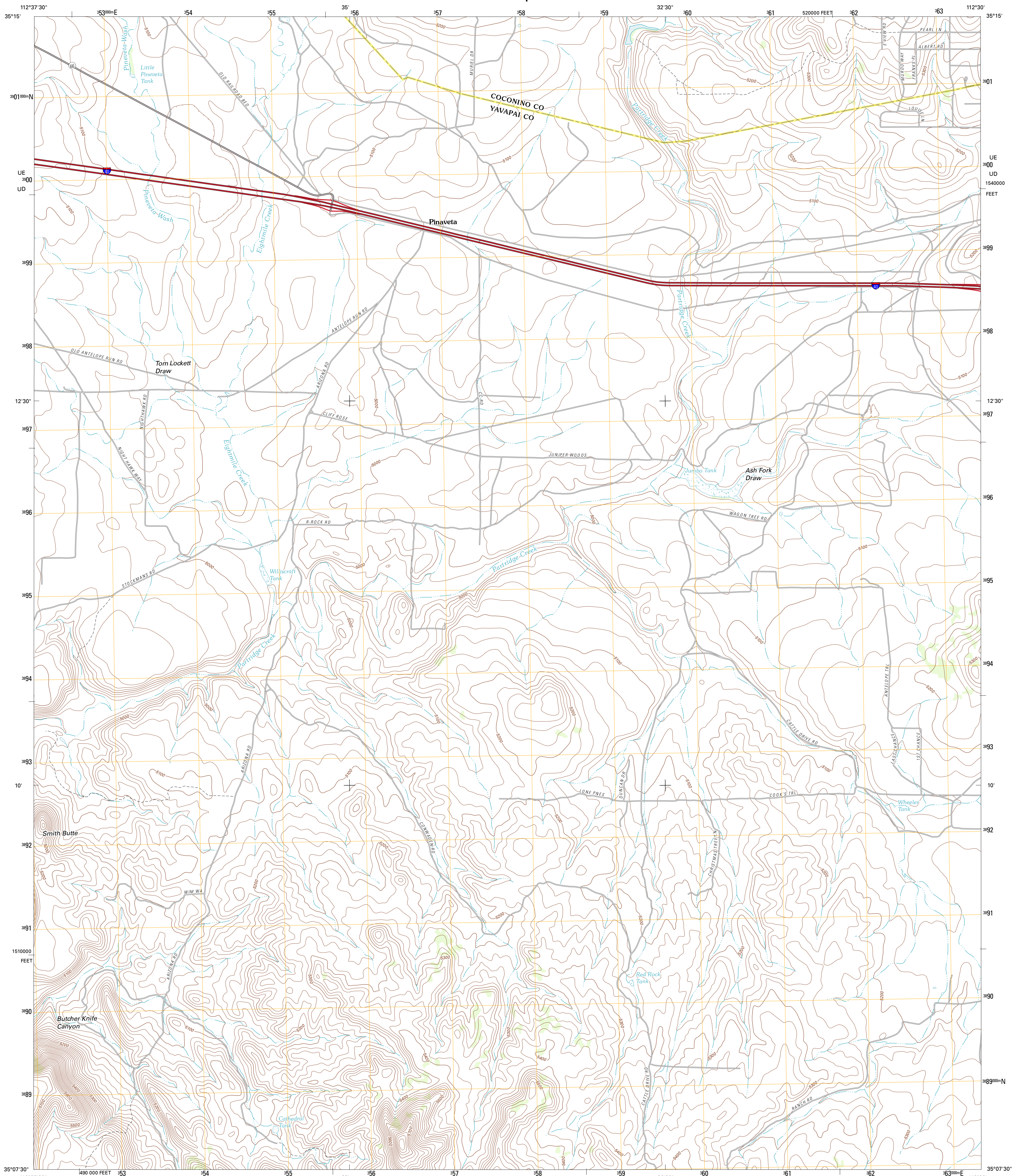




U.S. DEPARTMENT OF THE INTERIOR  
U. S. GEOLOGICAL SURVEY

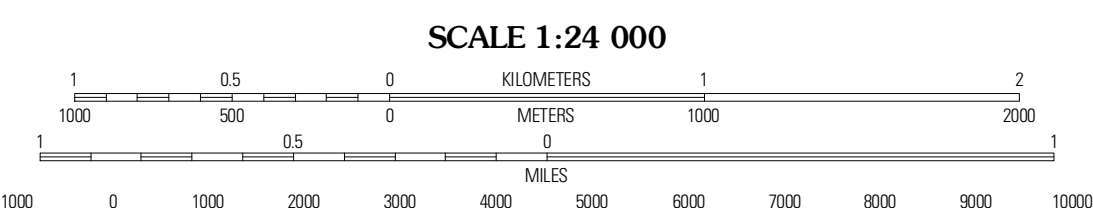
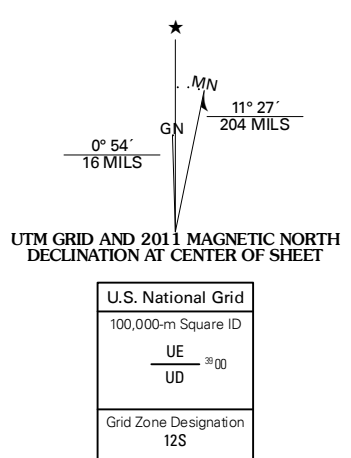


CATHEDRAL CAVES QUADRANGLE  
ARIZONA  
7.5-MINUTE SERIES



Produced by the United States Geological Survey  
North American Datum of 1983 (NAD83)  
World Geodetic System of 1984 (WGS84) Projection and  
1 000-meter grid; Universal Transverse Mercator, Zone 12S  
10 000-foot ticks; Arizona Coordinate System of 1983  
(central zone)

Imagery.....NAIP, June 2010  
Roads.....©2006-2011 TomTom  
Names.....GNIS, 2011  
Hydrography.....National Hydrography Dataset, 2007  
Contours.....National Elevation Dataset, 2002  
Boundaries.....Census, IBWC, IBC, USGS, 1972 - 2010



CONTOUR INTERVAL 20 FEET  
NORTH AMERICAN VERTICAL DATUM OF 1988

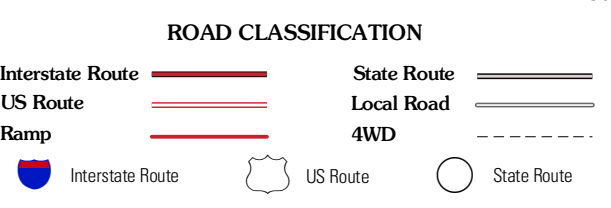
This map was produced to conform with the  
National Geospatial Program US Topo Product Standard, 2011.  
A metadata file associated with this product is draft version 0.6.1



QUADRANGLE LOCATION

|                  |                       |                    |
|------------------|-----------------------|--------------------|
| Crookton         | Horse<br>Trap<br>Mesa | Fitzgerald<br>Hill |
| Picacho<br>Butte | Cathedral<br>Caves    | Ash<br>Fork        |
| South<br>Butte   | Picacho<br>Butte SE   | Meath<br>Spring    |

ADJOINING 7.5 QUADRANGLES



CATHEDRAL CAVES, AZ  
2011