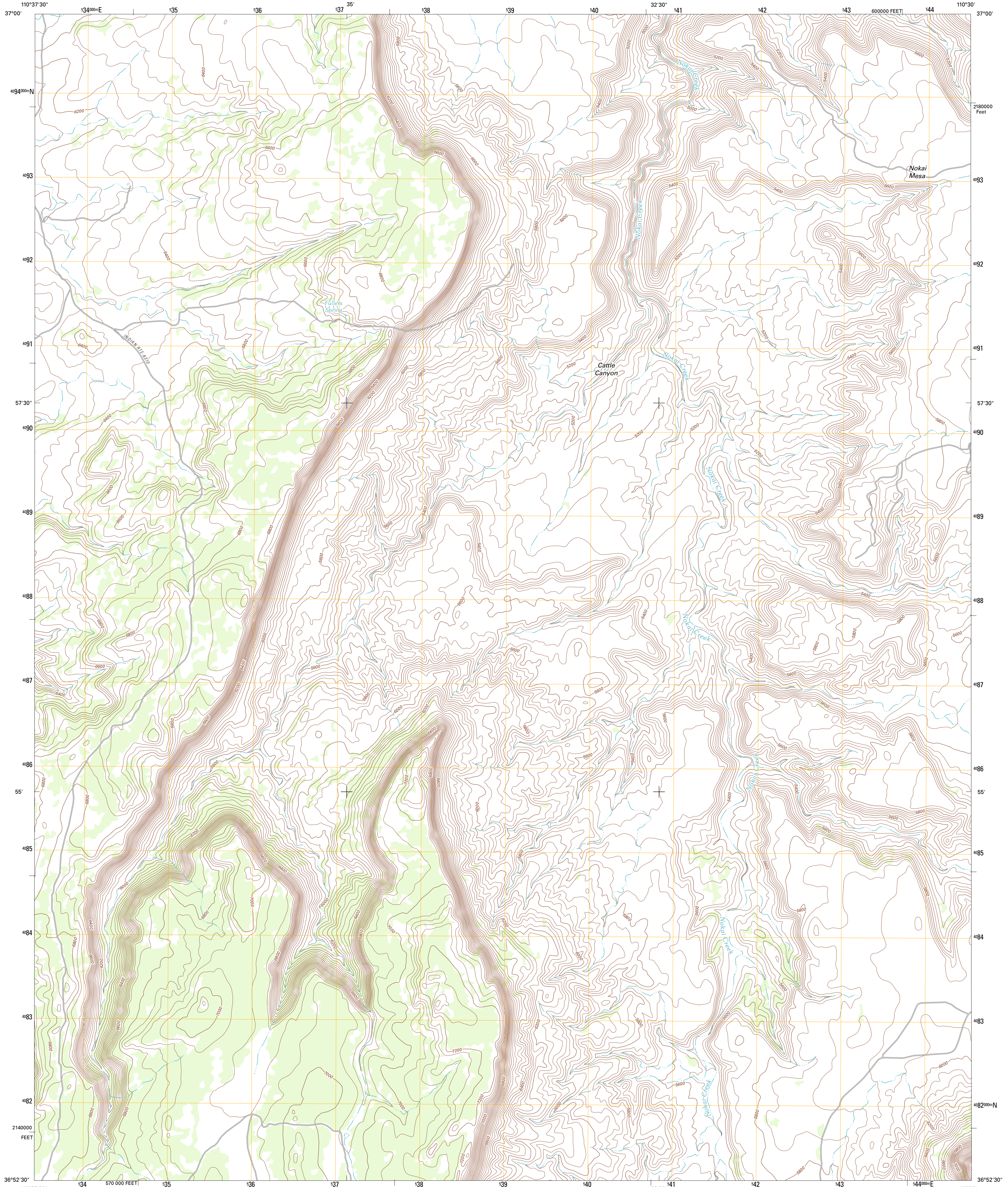




U.S. DEPARTMENT OF THE INTERIOR  
U. S. GEOLOGICAL SURVEY



CATTLE CANYON QUADRANGLE  
ARIZONA-NAVAJO CO.  
7.5-MINUTE SERIES



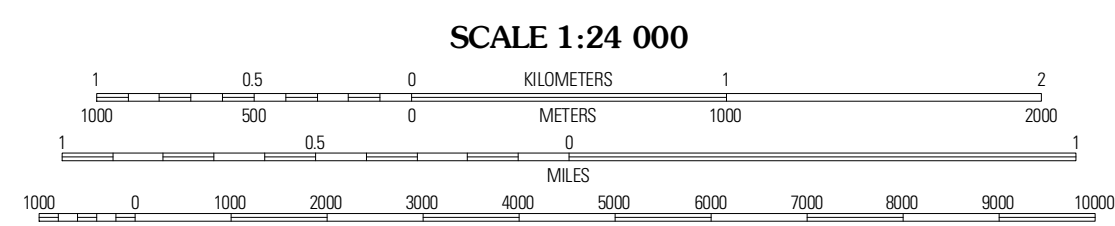
Produced by the United States Geological Survey  
North American Datum of 1983 (NAD83)  
World Geodetic System of 1984 (WGS84). Projection and  
10 000-foot ticks: Arizona Coordinate System of 1983 (east  
zone)

Imagery.....NAP, June 2010  
Roads.....©2006-2011 TomTom  
Names.....GNIS, 2011  
Hydrography.....National Hydrography Dataset, 2007  
Contours.....National Elevation Dataset, 1999  
Boundaries.....Census, BWC, USGS, 1972 - 2010

UTM GRID AND 2011 MAGNETIC NORTH  
DECLINATION AT CENTER OF SHEET

U.S. National Grid  
100,000m Square ID  
WF  
Grid Zone Designation  
12S

0° 18' 5 MILS  
11° 5' 197 MILS



CONTOUR INTERVAL 40 FEET  
NORTH AMERICAN VERTICAL DATUM OF 1988

This map was produced to conform with the  
National Geospatial Program US Topo Product Standard, 2011.  
A metadata file associated with this product is draft version 0.6.1



QUADRANGLE LOCATION

Deep Canyon South	No Mans Mesa South	Jacobs Monument
Tall Mountain NW	Cattle Canyon	Big Point
Oak Springs	Tall Mountain	Keet Seal Butte

ROAD CLASSIFICATION

Interstate Route (thick red line)  
US Route (red line)  
Ramp (red line with blue triangle)

State Route (thin red line)  
Local Road (black line)  
4WD (dashed black line)

CATTLE CANYON, AZ  
2011

ADJOINING 7.5' QUADRANGLES