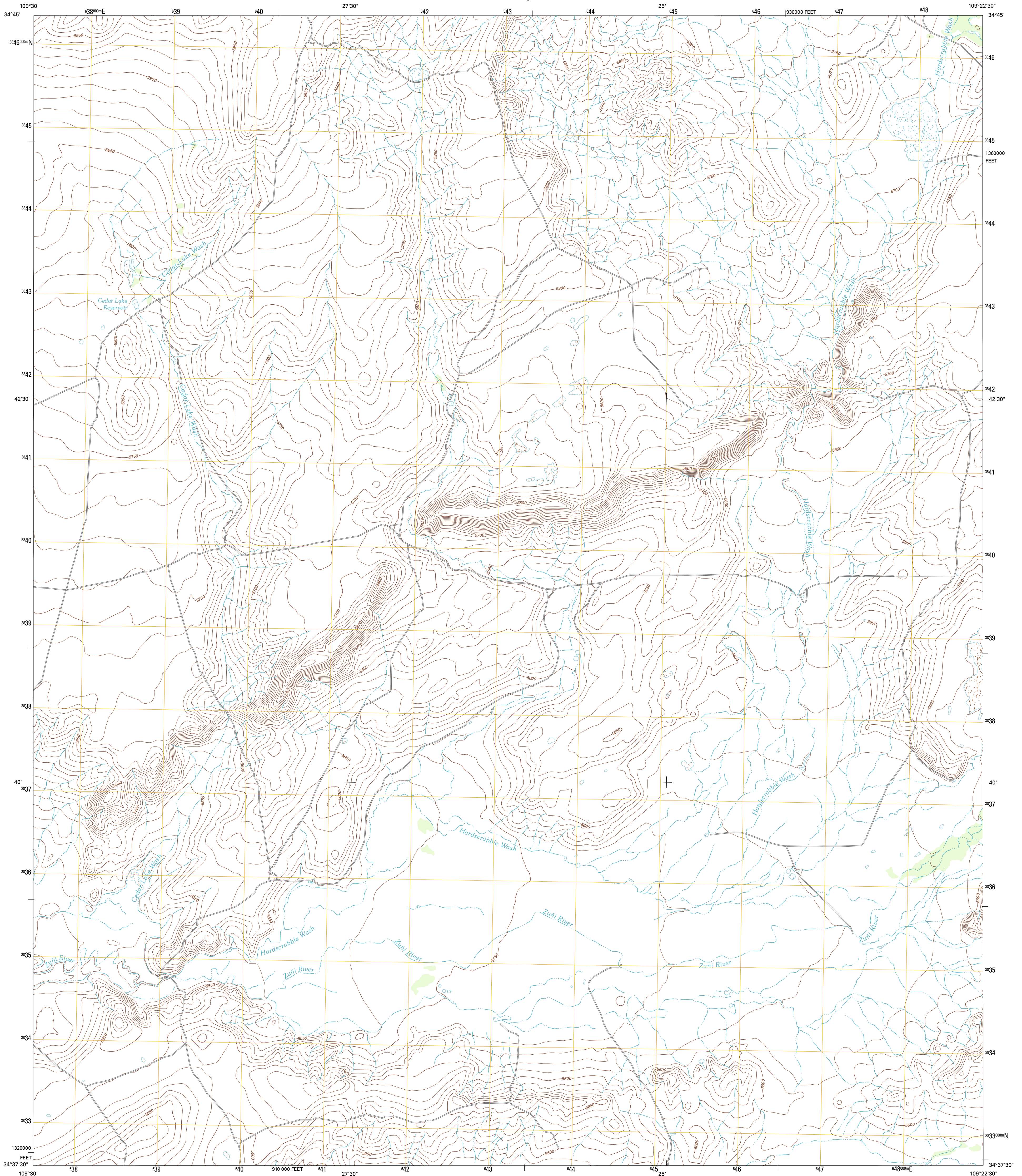




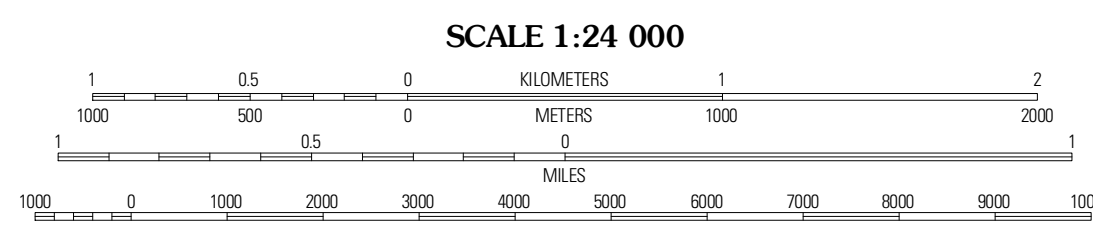
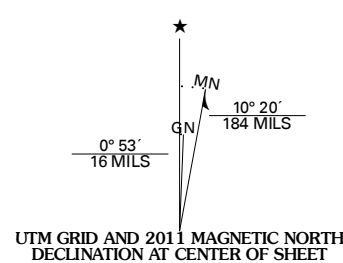
U.S. DEPARTMENT OF THE INTERIOR
U. S. GEOLOGICAL SURVEY



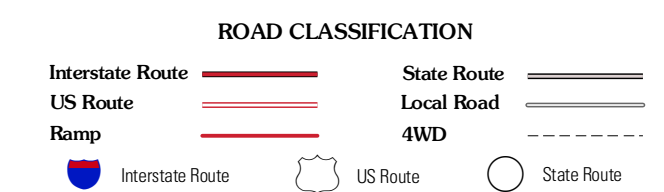
CEDAR LAKE WASH QUADRANGLE
ARIZONA-APACHE CO.
7.5-MINUTE SERIES



Produced by the United States Geological Survey
North American Datum of 1983 (NAD83)
World Geodetic System of 1984 (WGS84). Projection and
1 000-meter grid: Universal Transverse Mercator, Zone 12S
10 000-foot ticks: Arizona Coordinate System of 1983 (east
zone)



CONTOUR INTERVAL 10 FEET
NORTH AMERICAN VERTICAL DATUM OF 1988
This map was produced to conform with the
National Geospatial Program US Topo Product Standard, 2011.
A metadata file associated with this product is draft version 0.6.1



QUADRANGLE LOCATION

Seven Springs	Long H Ranch	Prospect Spring
Sinking Springs Mountain	Cedar Lake Wash	Schnebly Well
Sinking Springs	Zion Reservoir	Saint Johns North

Imagery:.....N/AIP, June 2010
Roads:.....©2006-2011 TomTom
Names:.....GNIS, 2011
Hydrography:.....National Hydrography Dataset, 2007
Contours:.....National Elevation Dataset, 2002
Boundaries:.....Census, BWC, BGC, USGS, 1972 - 2010

U.S. National Grid
100,000m Square ID
XD
Grid Zone Designation
12S

CEDAR LAKE WASH, AZ
2011

ADJOINING 7.5 QUADRANGLES