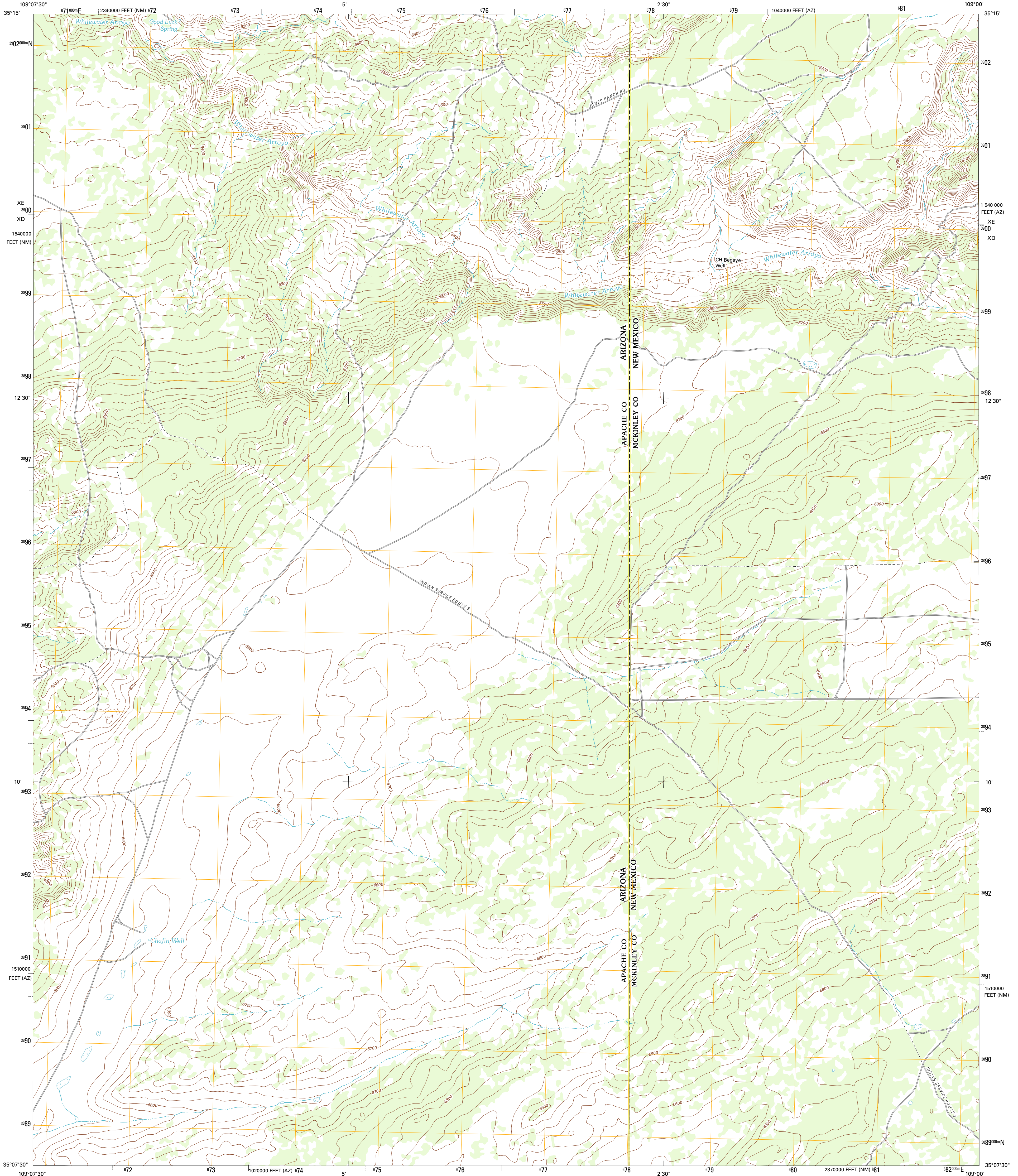




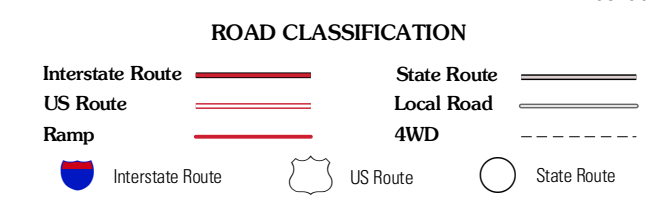
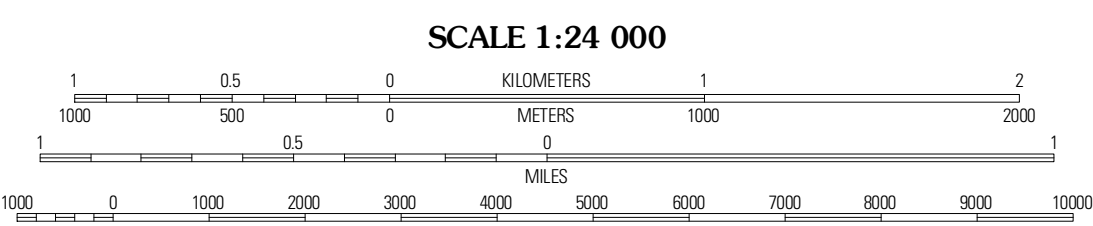
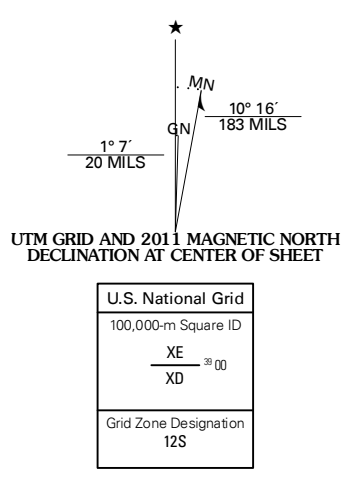
U.S. DEPARTMENT OF THE INTERIOR
U. S. GEOLOGICAL SURVEY



CHAFIN WELL QUADRANGLE
ARIZONA-NEW MEXICO
7.5-MINUTE SERIES



Produced by the United States Geological Survey
North American Datum of 1983 (NAD83)
World Geodetic System of 1984 (WGS84). Projection and
1 000-meter grid: Universal Transverse Mercator, Zone 12S
10 000-foot ticks: Arizona Coordinate System of 1983 (east zone), New Mexico Coordinate System of 1983 (west zone)



QUADRANGLE LOCATION

Hook	Lupton	Jones Ranch School
Tolpall Spring	Chafin Well	Chi Chil Tah
Deep Lake	High Lowsome Well	Tekapo

CONTOUR INTERVAL 20 FEET
NORTH AMERICAN VERTICAL DATUM OF 1988

This map was produced to conform with the National Geospatial Program US Topo Product Standard, 2011. A metadata file associated with this product is draft version 0.6.1

CHAFIN WELL, AZ-NM
2011

ADJOINING 7.5 QUADRANGLES