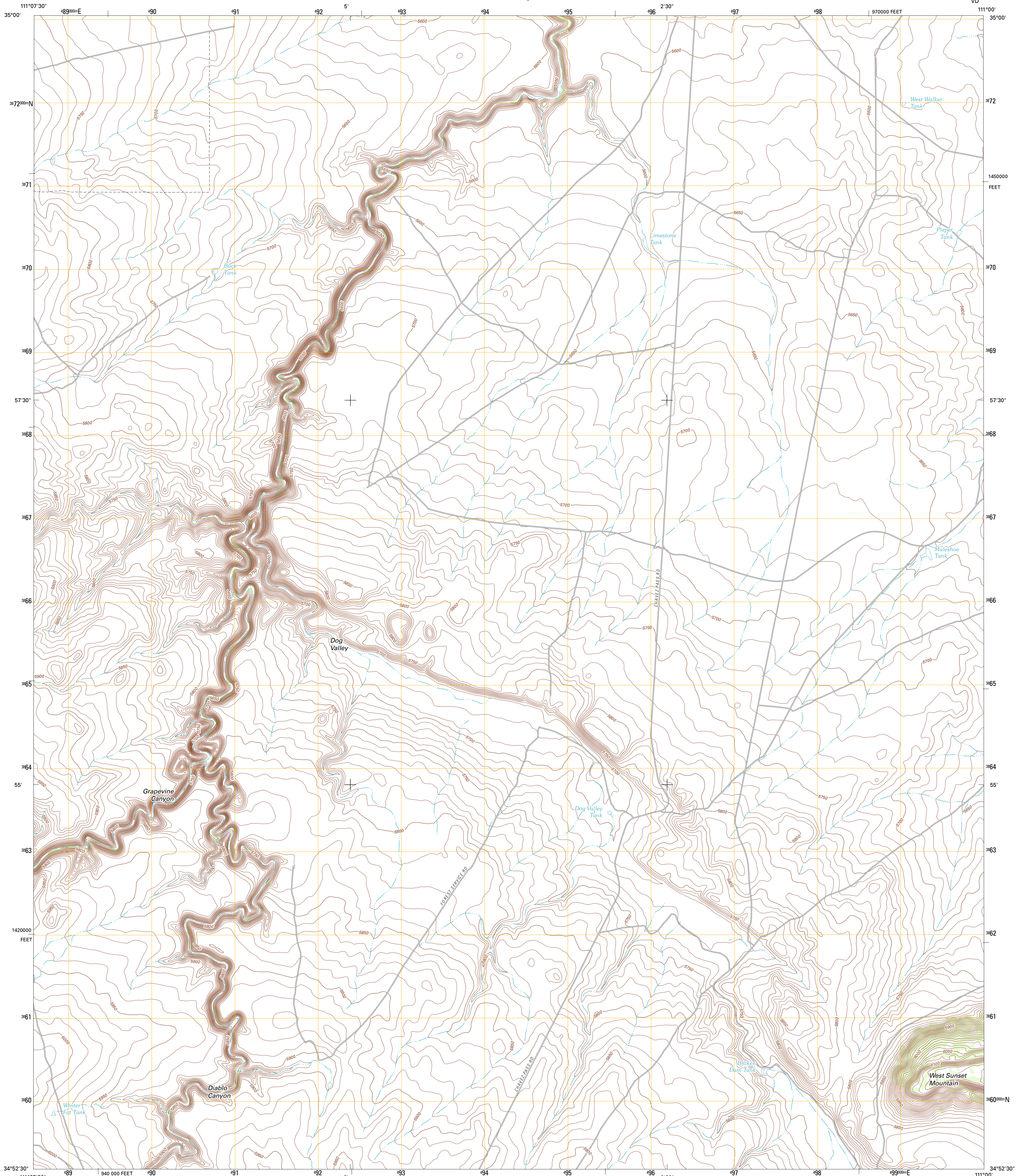




U.S. DEPARTMENT OF THE INTERIOR
U. S. GEOLOGICAL SURVEY

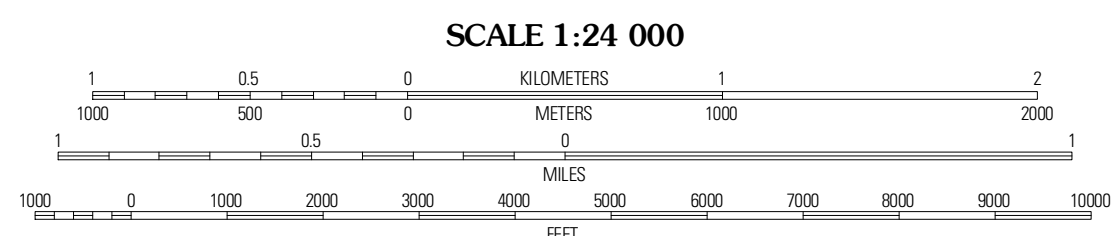
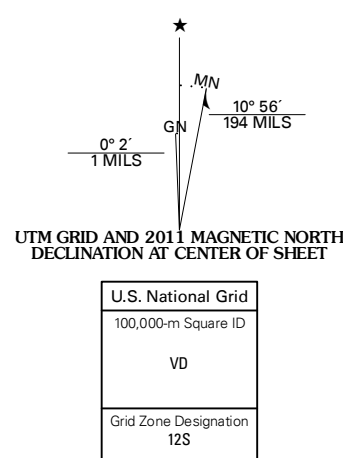


CHAVEZ MOUNTAIN NE QUADRANGLE
ARIZONA-COCONINO CO.
7.5-MINUTE SERIES



Produced by the United States Geological Survey
North American Datum of 1983 (NAD83)
World Geodetic System of 1984 (WGS84). Projection and
1 000-meter grid: Universal Transverse Mercator, Zone 12S
10 000-foot ticks: Arizona Coordinate System of 1983
(central zone)

Imagery: NIP, June 2010
Roads: ©2006-2011 TomTom
Names: GNIS, 2011
Hydrography: National Hydrography Dataset, 2007
Contours: National Elevation Dataset, 1999
Boundaries: Census, IBWC, IBC, USGS, 1972 - 2010



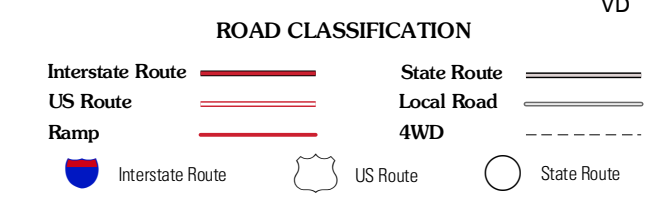
CONTOUR INTERVAL 10 FEET
NORTH AMERICAN VERTICAL DATUM OF 1988
This map was produced to conform with the
National Geospatial Program US Topo Product Standard, 2011.
A metadata file associated with this product is draft version 0.6.1



QUADRANGLE LOCATION

Anderson Canyon	Meteor Crater	Tucker Mesa SW
Chavez Mountain NW	Chavez Mountain NE	West Sunset Mountain
Chavez Mountain West	Chavez Mountain East	Sunset Pass

ADJOINING 7.5 QUADRANGLES



CHAVEZ MOUNTAIN NE, AZ
2011