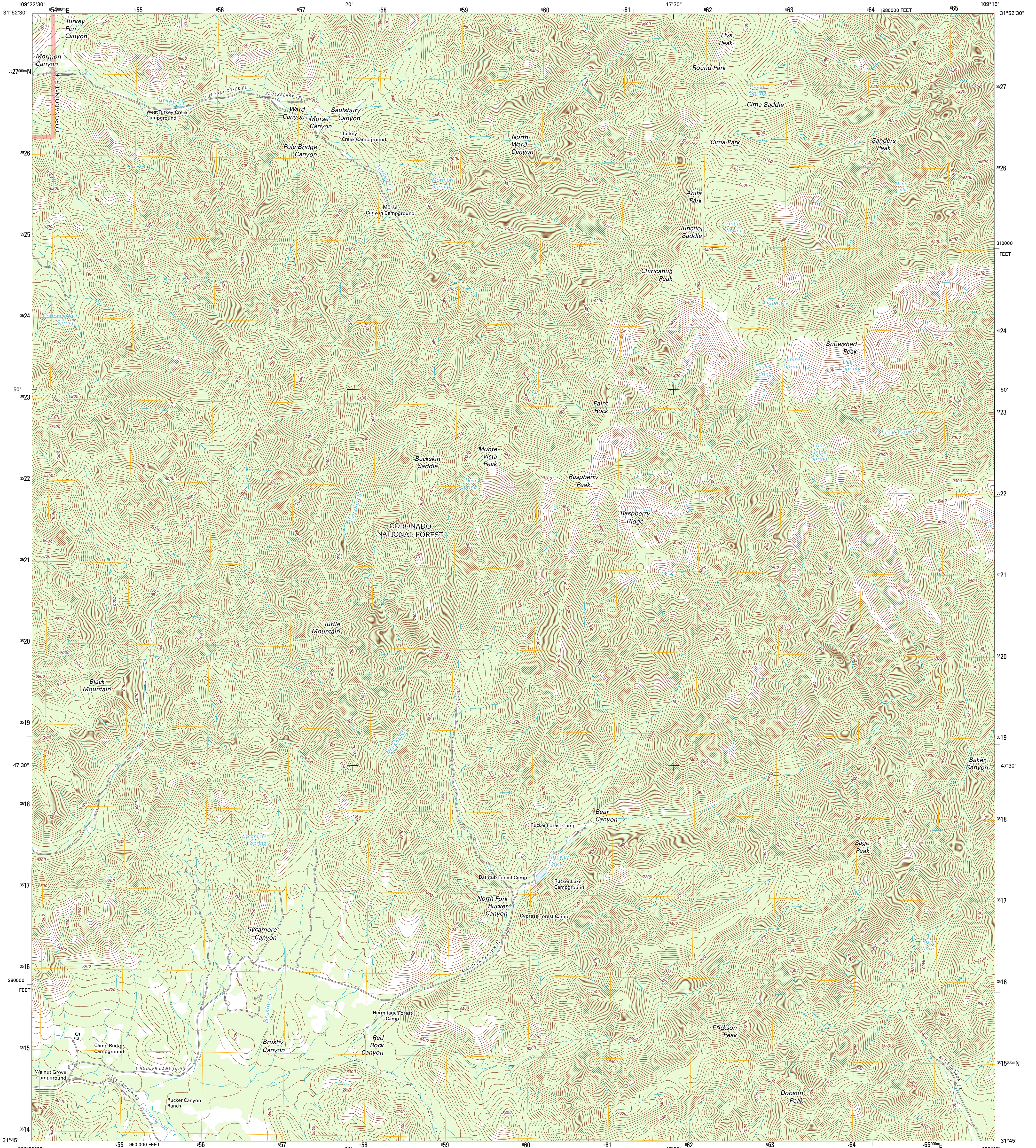




U.S. DEPARTMENT OF THE INTERIOR
U. S. GEOLOGICAL SURVEY

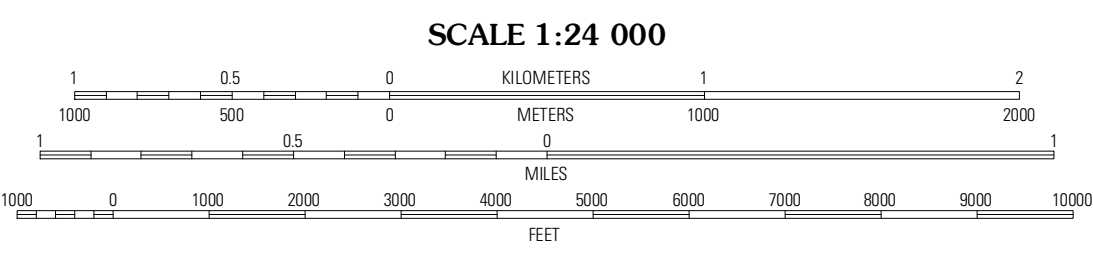
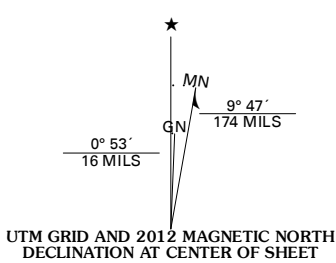


CHIRICAHUA PEAK QUADRANGLE
ARIZONA-COCHISE CO.
7.5-MINUTE SERIES



Produced by the United States Geological Survey
North American Datum of 1983 (NAD83)
World Geodetic System of 1984 (WGS84), Projection and
1 000-meter grid: Universal Transverse Mercator, Zone 12R
10 000-foot ticks: Arizona Coordinate System of 1983 (east zone)

Imagery.....N.A.I.P., June 2010
Roads.....02/06-2011 TomTom
Roads within US Forest Service Lands.....FSTopo Data
with limited Forest Service updates, 2009
Names.....GNIS, 2011
Hydrography.....National Hydrography Dataset, 2010
Contours.....National Elevation Dataset, 2002
Boundaries.....Census, IBWC, IBC, USGS, 1972 - 2010



CONTOUR INTERVAL 40 FEET
NORTH AMERICAN VERTICAL DATUM OF 1988

This map was produced to conform with the
National Geospatial Program US Topo Product Standard, 2011.
A metadata file associated with this product is draft version 0.6.1



QUADRANGLE LOCATION

File Peak	Ruster Peak	Portal
Stanford Canyon	Chiricahua Peak	Portal Peak
Bruno Peak	Sweede Peak	Apache

ROAD CLASSIFICATION

Interstate Route

US Route

Ramp

State Route

Local Road

4WD

US Route

FS Primary Route

FS Passenger Route

FS High Clearance Route

Check with local Forest Service unit for current travel conditions and restrictions.

CHIRICAHUA PEAK, AZ
2012

ADJOINING 7.5 QUADRANGLES