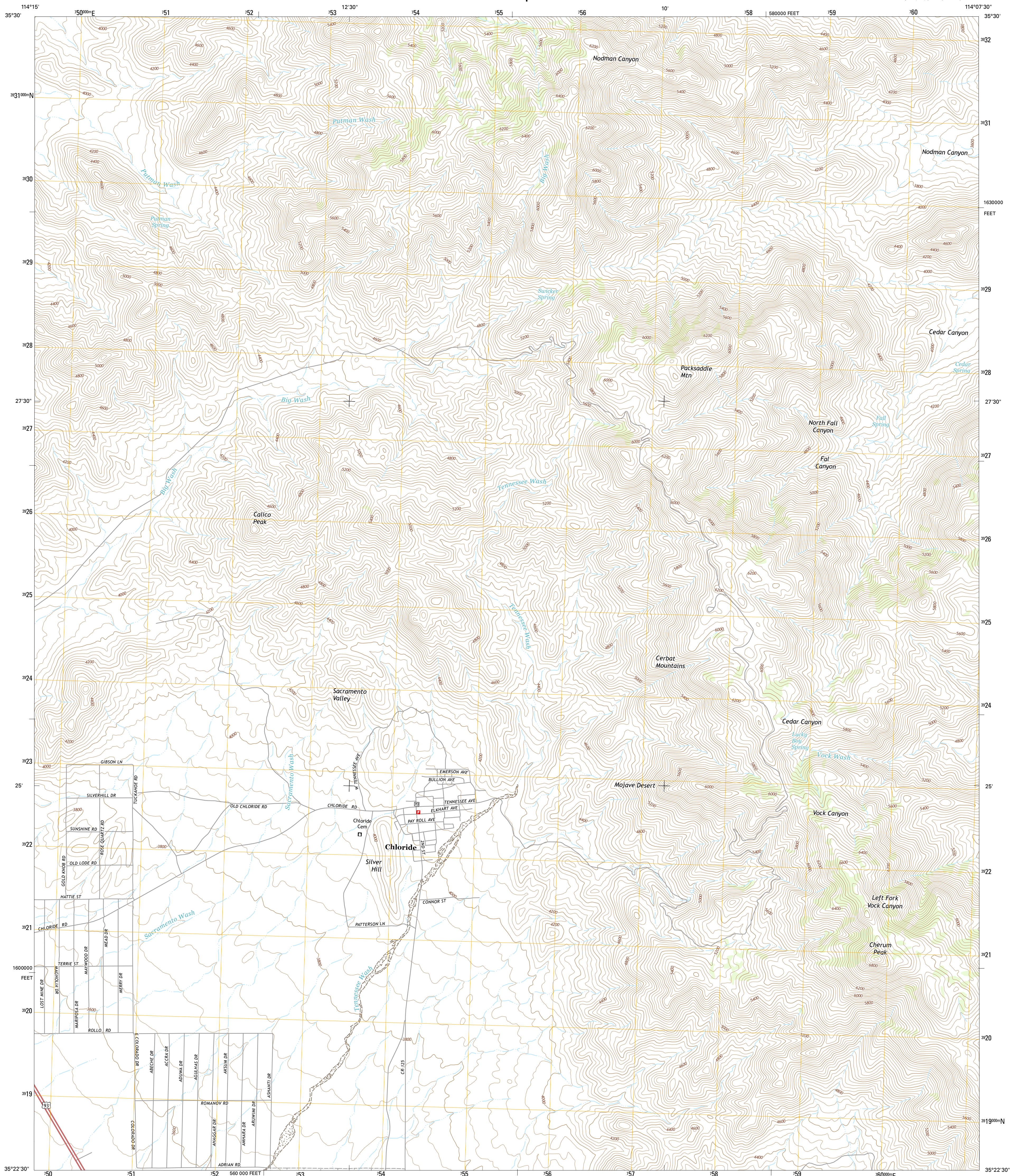




U.S. DEPARTMENT OF THE INTERIOR
U.S. GEOLOGICAL SURVEY



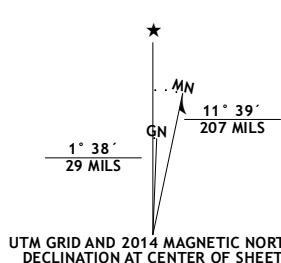
CHLORIDE QUADRANGLE
ARIZONA-MOHAVE CO.
7.5-MINUTE SERIES



Produced by the United States Geological Survey
North American Datum of 1983 (NAD83)
World Geodetic System of 1984 (WGS84)
1:100,000-meter grid; Universal Transverse Mercator, Zone 11S
10,000-foot ticks; Arizona Coordinate System of 1983 (west zone)

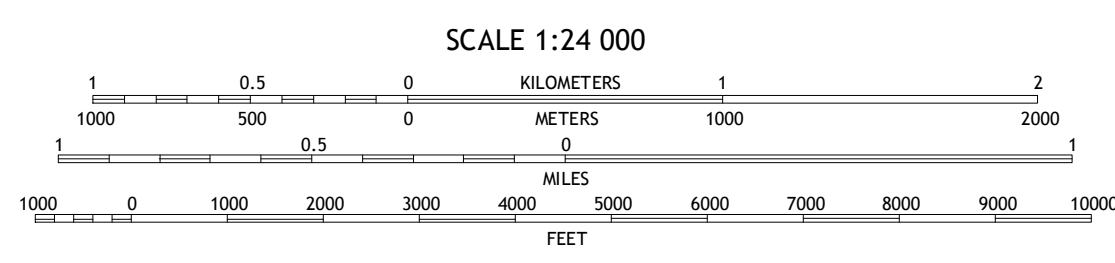
This map is not a legal document. Boundaries may be generalized for this map scale. Private lands within government reservations may not be shown. Obtain permission before entering private lands.

Imagery.....NAIP, June 2013
Roads.....HERE, ©2013
Names.....GNS, ©2013
Hydrography.....National Hydrography Dataset, 2013
Contours.....National Elevation Dataset, 2002
Boundaries.....Multiple sources; see metadata file 1972_2014
Public Land Survey System.....BLM, 2011



U.S. National Grid
100,000-m Square ID

QV
Grid Zone Designation 11S



CONTOUR INTERVAL 40 FEET
NORTH AMERICAN VERTICAL DATUM OF 1988

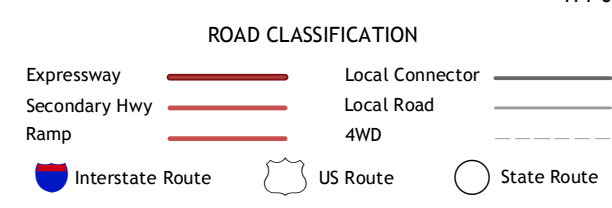
This map was produced to conform with the National Geospatial Program US Topo Product Standard, 2011. A metadata file associated with this product is draft version 0.6.16



ADJOINING QUADRANGLES

1	2	3
4	5	6
7	8	

- 1 Dolan Springs
- 2 Mount Tipton
- 3 Mount Tipton SE
- 4 Grasshopper Junction
- 5 Elements Canyon
- 6 Grasshopper Junction SE
- 7 Cerbat
- 8 Stockton Hill



CHLORIDE, AZ
2014

