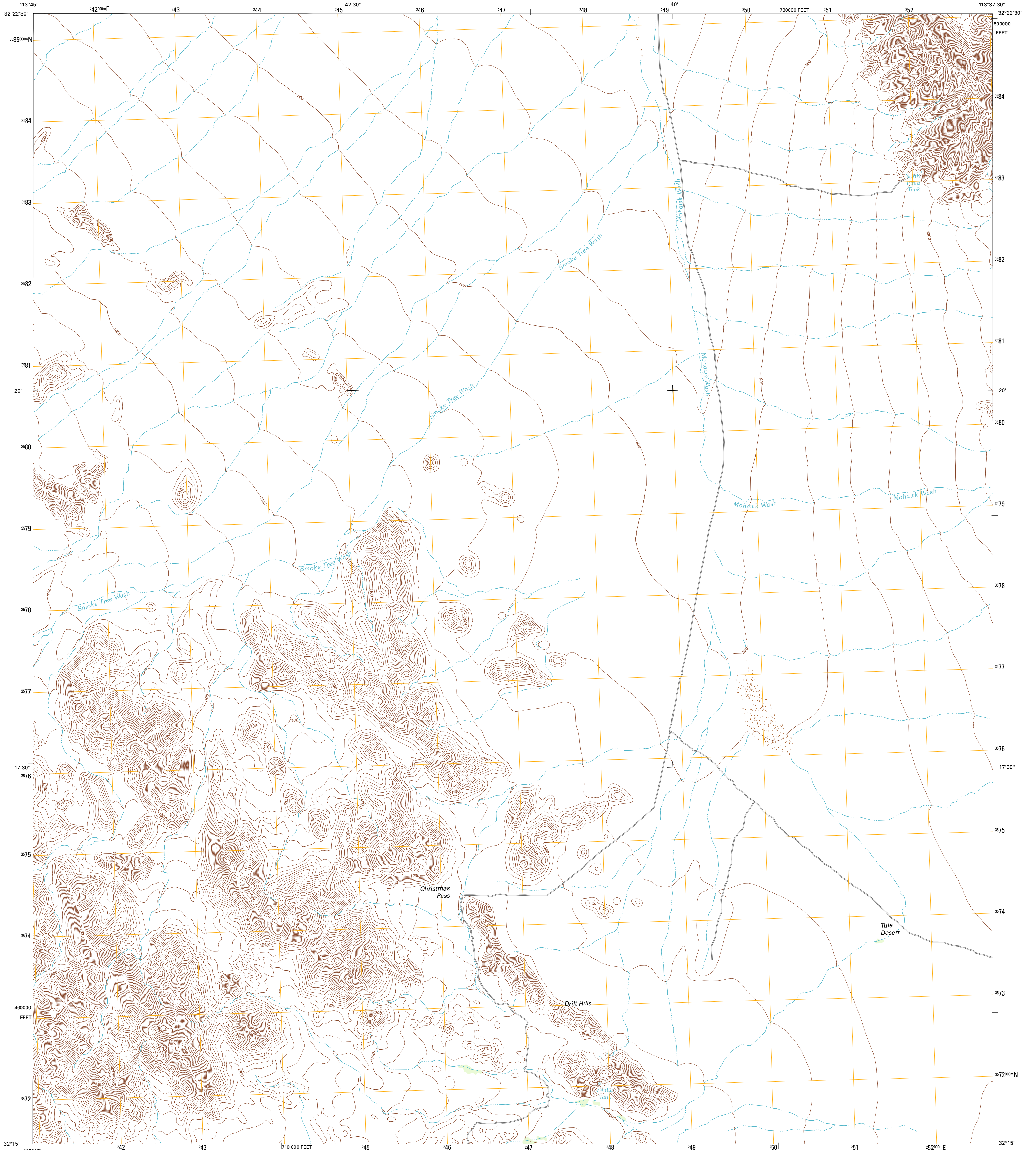




U.S. DEPARTMENT OF THE INTERIOR
U. S. GEOLOGICAL SURVEY

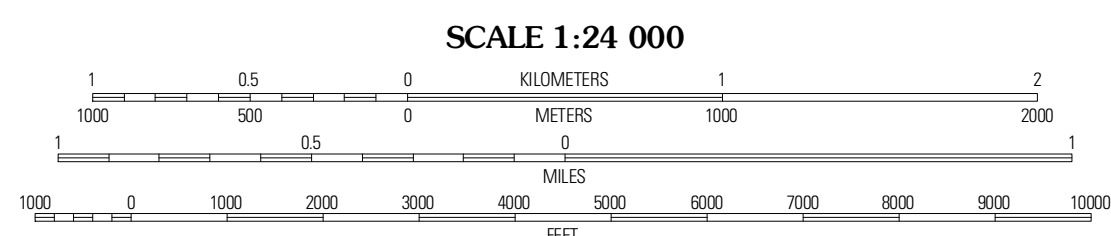
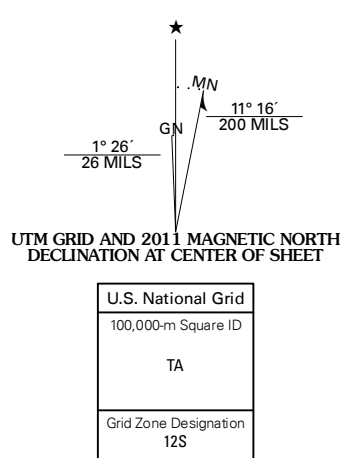


CHRISTMAS PASS QUADRANGLE
ARIZONA-YUMA CO.
7.5-MINUTE SERIES



Produced by the United States Geological Survey
North American Datum of 1983 (NAD83)
World Geodetic System of 1984 (WGS84) Projection and
1 000-meter grid; Universal Transverse Mercator, Zone 12S
10 000-foot ticks; Arizona Coordinate System of 1983 (west zone)

Imagery.....NAP, July 2010
Roads.....©2006-2011 TomTom
Names.....GNIS, 2011
Hydrography.....National Hydrography Dataset, 2007
Contours.....National Elevation Dataset, 2003
Boundaries.....Census, IBWC, IBC, USGS, 1972 - 2010



CONTOUR INTERVAL 20 FEET
NORTH AMERICAN VERTICAL DATUM OF 1988

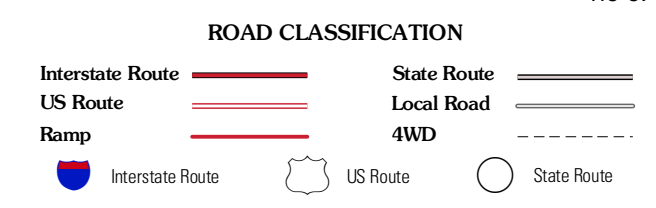
This map was produced to conform with the
National Geospatial Program US Topo Product Standard, 2011.
A metadata file associated with this product is draft version 0.6.1



QUADRANGLE LOCATION

East of Buck Peak	Point of the Pintas	North of Isla Pinta
Cabeza Pinta Peak	Christmas Pass	Isla Pinta
Tule Mountains	Sierra Arida	Paradise Canyon

ADJOINING 7.5 QUADRANGLES



CHRISTMAS PASS, AZ
2011