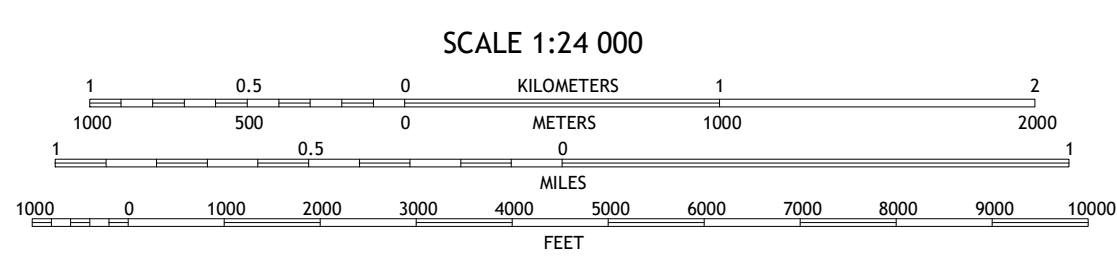
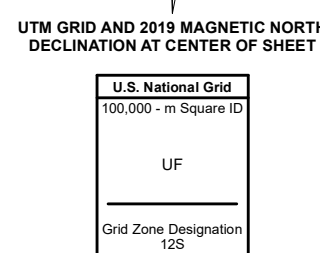
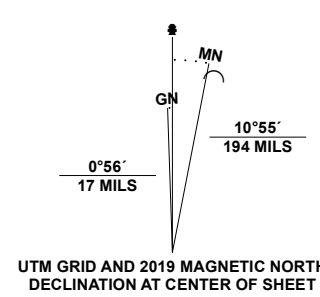


Produced by the United States Geological Survey

North American Datum of 1983 (NAD83)
World Geodetic System of 1984 (WGS84). Projection and
1 000-meter grid/Universal Transverse Mercator, Zone 12S
This map is not a legal document. Boundaries may be
generalized for this map scale. Private lands within government
reservations may not be shown. Obtain permission before
entering private lands.

Imagery.....NAIP, June 2019 - June 2019
Roads.....U.S. Census Bureau, 2018
Names.....GNIS, 1980 - 2021
Hydrography.....National Hydrography Dataset, 2002 - 2019
Contours.....National Elevation Dataset, 2018
Boundaries.....Multiple sources: see metadata file, 2019 - 2021
Public Land Survey System.....BLM, 2017
Wetlands.....FWS National Wetlands Inventory Not Available



CONTOUR INTERVAL 40 FEET
NORTH AMERICAN VERTICAL DATUM OF 1988
This map was produced to conform with the
National Geospatial Program US Topo Product Standard.



QUADRANGLE LOCATION

1	2	3
4	5	6
7	8	

ADJOINING QUADRANGLES

- 1 Kalbab
- 2 Fredonia
- 3 Shinarump Point
- 4 Pipe Spring
- 5 White Sage Flat
- 6 Findlay Tank
- 7 Gunsight Point
- 8 Toothpick Ridge

ROAD CLASSIFICATION

	Expressway		Local Connector
	Secondary Hwy		Local Road
	Ramp		4WD
	Interstate Route		US Route
			State Route

CLEAR WATER SPRING, AZ

2021

