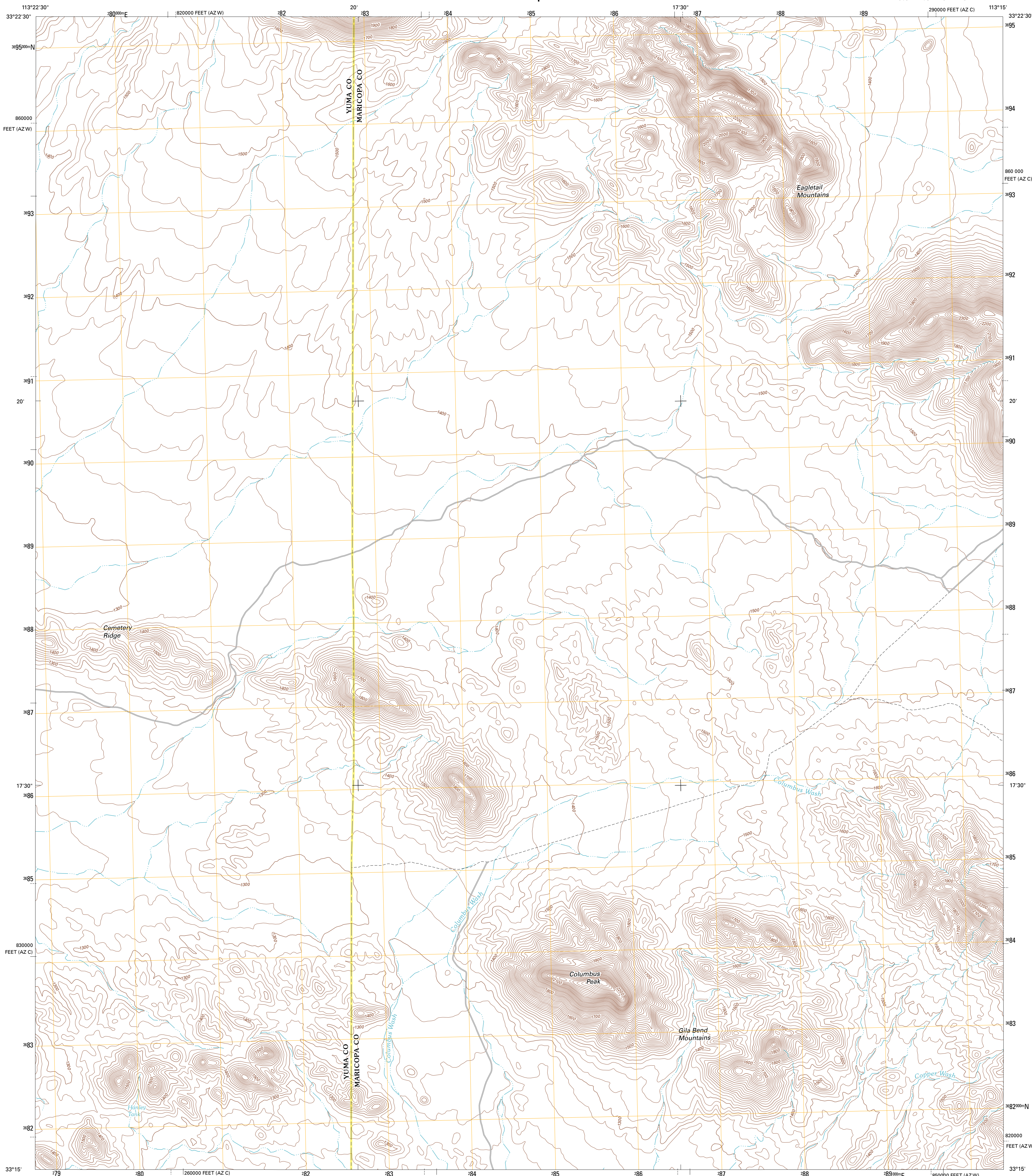




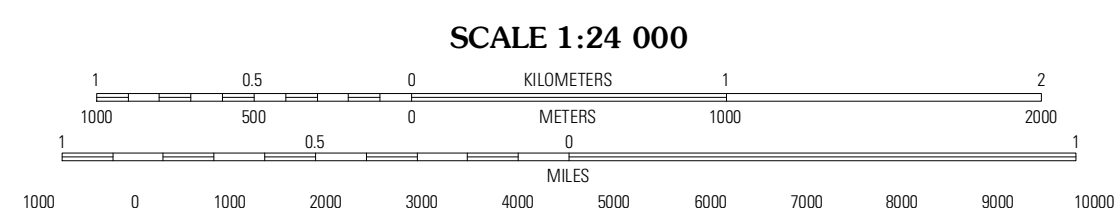
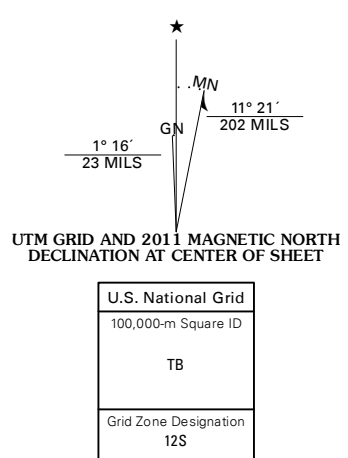
U.S. DEPARTMENT OF THE INTERIOR
U. S. GEOLOGICAL SURVEY



COLUMBUS PEAK QUADRANGLE
ARIZONA
7.5-MINUTE SERIES



Produced by the United States Geological Survey
North American Datum of 1983 (NAD83)
World Geodetic System of 1984 (WGS84). Projection and
1 000-meter grid: Universal Transverse Mercator, Zone 12S
10 000-foot ticks: Arizona Coordinate System of 1983
(central and west zones)



CONTOUR INTERVAL 20 FEET
NORTH AMERICAN VERTICAL DATUM OF 1988

This map was produced to conform with the National Geospatial Program US Topo Product Standard, 2011. A metadata file associated with this product is draft version 0.6.1



QUADRANGLE LOCATION

Eagletail Mountains West	Eagletail Mountains East	Cortez Peak NW
Northbush Butte	Columbus Peak	Cortez Peak
Turtleback Mountain	Hyder NE	Yellow Medicine Butte

ROAD CLASSIFICATION

Interstate Route	State Route
US Route	Local Road
Ramp	4WD

COLUMBUS PEAK, AZ
2011

ADJOINING 7.5' QUADRANGLES