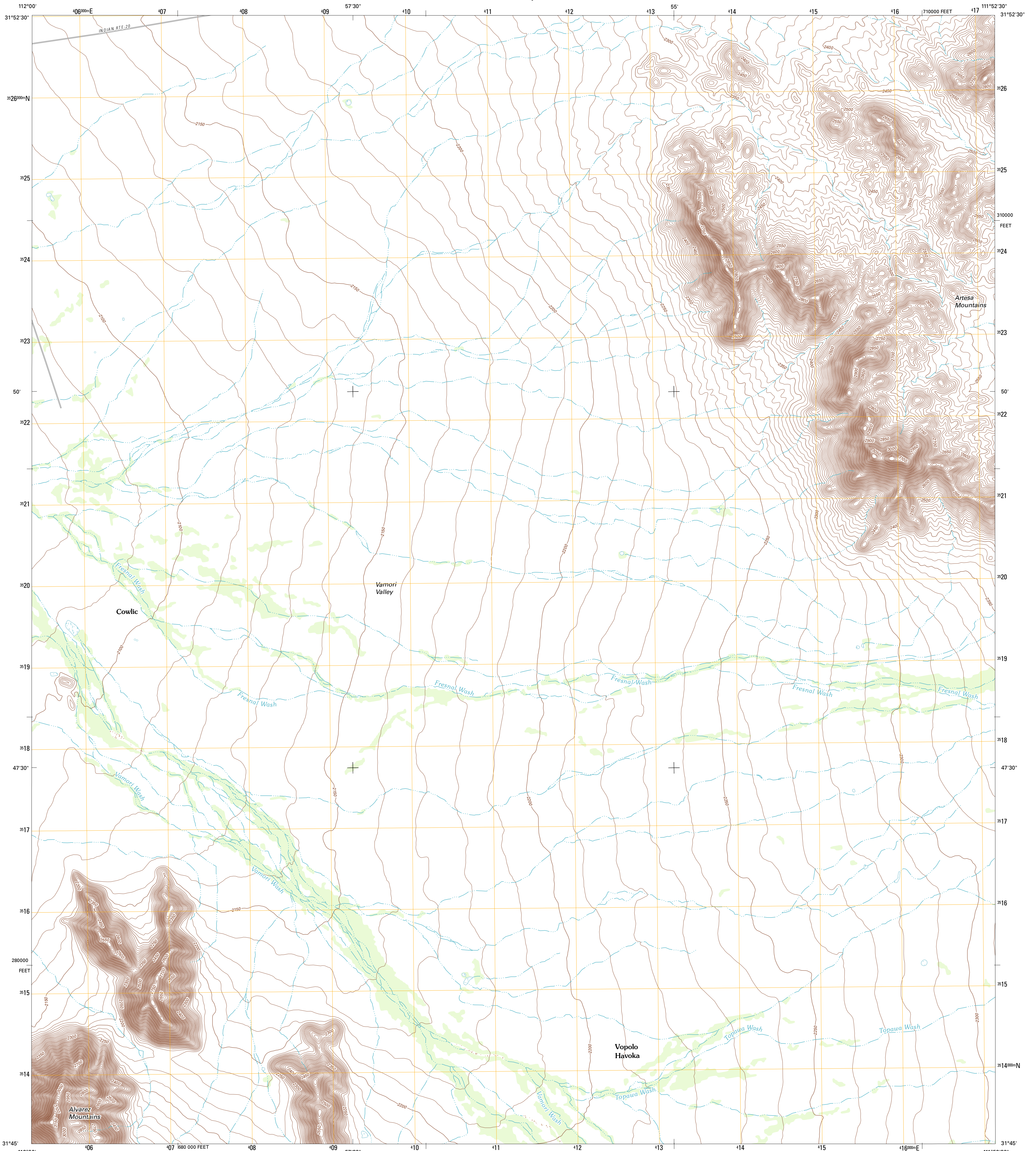




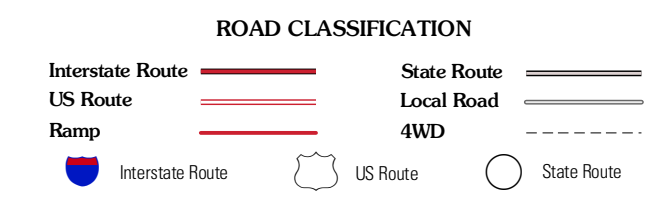
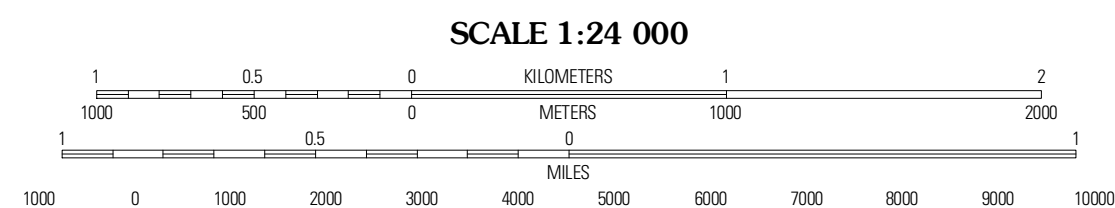
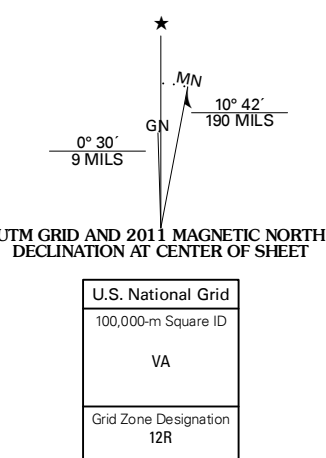
U.S. DEPARTMENT OF THE INTERIOR  
U. S. GEOLOGICAL SURVEY



COWLIC QUADRANGLE  
ARIZONA-PIMA CO.  
7.5-MINUTE SERIES



Produced by the United States Geological Survey  
North American Datum of 1983 (NAD83)  
World Geodetic System of 1984 (WGS84). Projection and  
1 000-foot grid: Universal Transverse Mercator, Zone 12R  
10 000-foot ticks: Arizona Coordinate System of 1983  
(central zone)



QUADRANGLE LOCATION

|                   |               |                  |
|-------------------|---------------|------------------|
| Ga<br>Oldak       | Sells<br>West | Sells<br>East    |
| Chukot<br>Kuk     | Cowlic        | Topawa           |
| Tecolote<br>Ranch | Vamori        | South<br>Komekik |

Imagery.....NAP, June 2010  
Roads.....©2006-2011 TomTom  
Names.....GNIS, 2011  
Hydrography.....National Hydrography Dataset, 2007  
Contours.....National Elevation Dataset, 2003  
Boundaries.....Census, IBWC, IBC, USGS, 1972 - 2010

CONTOUR INTERVAL 10 FEET  
NORTH AMERICAN VERTICAL DATUM OF 1988

This map was produced to conform with the  
National Geospatial Program US Topo Product Standard, 2011.  
A metadata file associated with this product is draft version 0.6.1

COWLIC, AZ  
2011

ADJOINING 7.5 QUADRANGLES