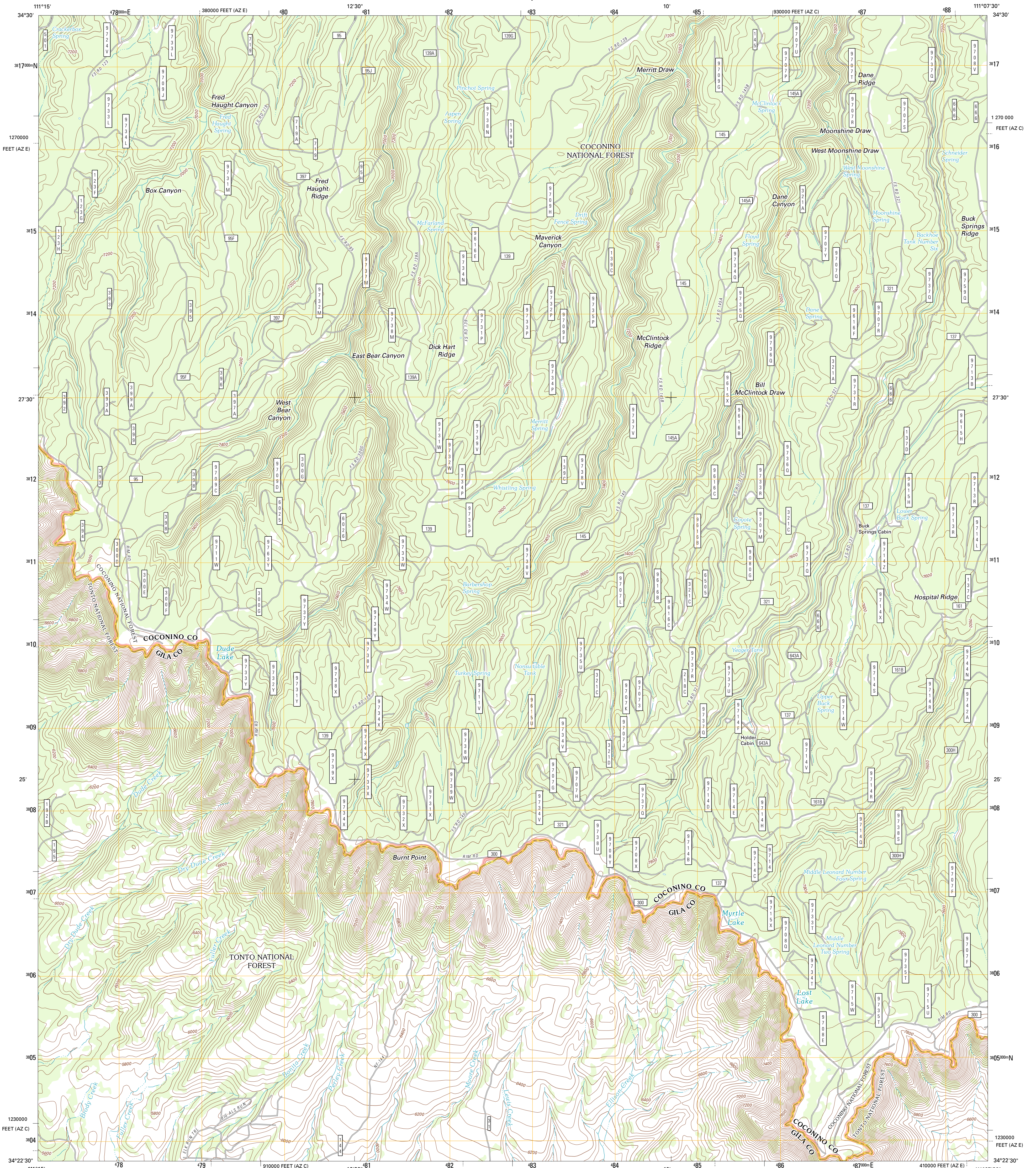




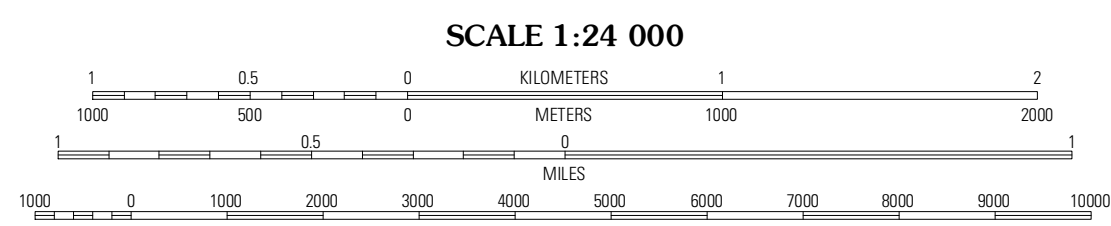
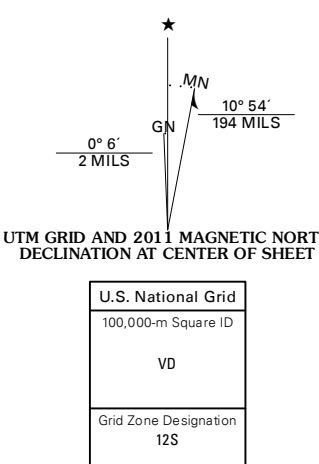
U.S. DEPARTMENT OF THE INTERIOR
U. S. GEOLOGICAL SURVEY



DANE CANYON QUADRANGLE
ARIZONA
7.5-MINUTE SERIES



Produced by the United States Geological Survey
North American Datum of 1983 (NAD83)
World Geodetic System of 1984 (WGS84). Projection and
1 000-meter grid: Universal Transverse Mercator, Zone 12S
10 000-foot ticks: Arizona Coordinate System of 1983
(central and east zones)



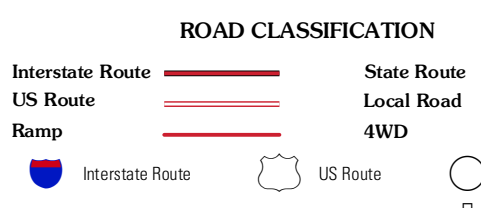
CONTOUR INTERVAL 40 FEET
NORTH AMERICAN VERTICAL DATUM OF 1988

This map was produced to conform with the
National Geospatial Program US Topo Product Standard, 2011.
A metadata file associated with this product is draft version 0.6.1



QUADRANGLE LOCATION

Long Valley	C.C. Craig Reservoir	Leonard Canyon
Kehl Ridge	Dane Canyon	Knoll Lake
Payson North	Diamond Point	Promontory Butte



Check with local Forest Service unit
for current travel conditions and restrictions.

DANE CANYON, AZ
2011

ADJOINING 7.5 QUADRANGLES