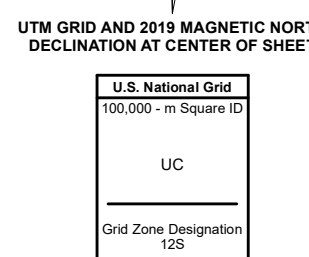
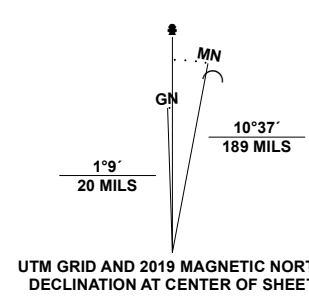


Produced by the United States Geological Survey

North American Datum of 1983 (NAD83)
World Geodetic System of 1984 (WGS84). Projection and
1 000-meter grid: Universal Transverse Mercator, Zone 12S
This map is not a legal document. Boundaries may be
generalized for this map scale. Private lands within government
reservations may not be shown. Obtain permission before
entering private lands.

Imagery.....NAIP, June 2019 - June 2019
Roads.....U.S. Census Bureau, 2018
Names.....GNIS, 1980-2019
Hydrography.....National Hydrography Dataset, 2004 - 2019
Contours.....National Elevation Dataset, 1999
Boundaries.....Multiple sources: see metadata file 2019 - 2021
Public Land Survey System.....BLM, 2017
Wetlands.....FWS National Wetlands Inventory Not Available



CONTOUR INTERVAL 20 FEET
NORTH AMERICAN VERTICAL DATUM OF 1988
This map was produced to conform with the
National Geospatial Program US Topo Product Standard.



1	2	3
4	5	6
7	8	

- 1 Date Creek Ranch NW
- 2 Date Creek Ranch
- 3 O'Neill Pass
- 4 Date Creek Ranch SW
- 5 Congress SW
- 6 Agulla
- 7 Forepaugh Peak
- 8 Outlaw Hill

ROAD CLASSIFICATION	
	Expressway
	Secondary Hwy
	Ramp
	Local Connector
	Local Road
	4WD
	US Route
	State Route

DATE CREEK RANCH SE, AZ

2021

