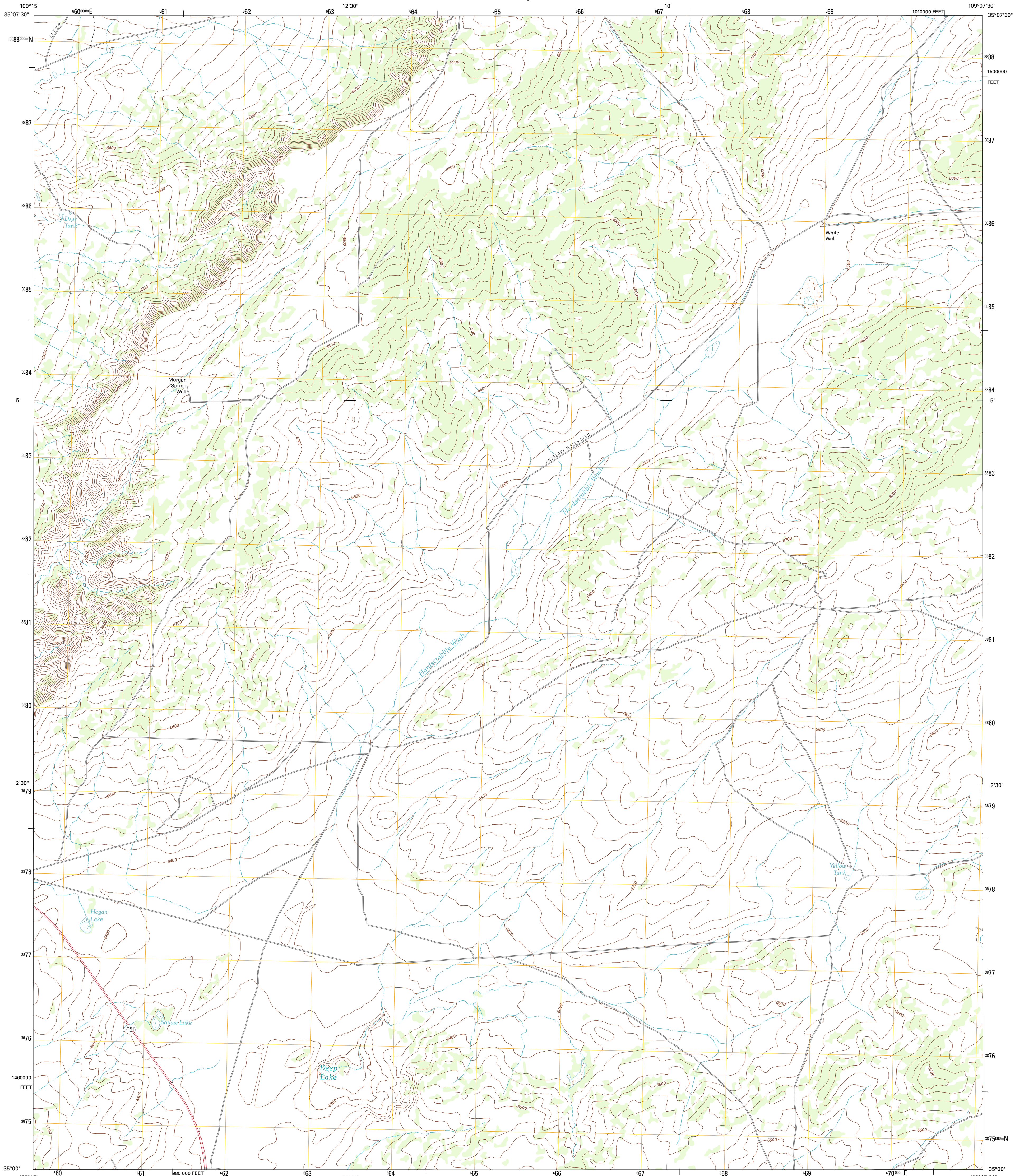




U.S. DEPARTMENT OF THE INTERIOR
U. S. GEOLOGICAL SURVEY

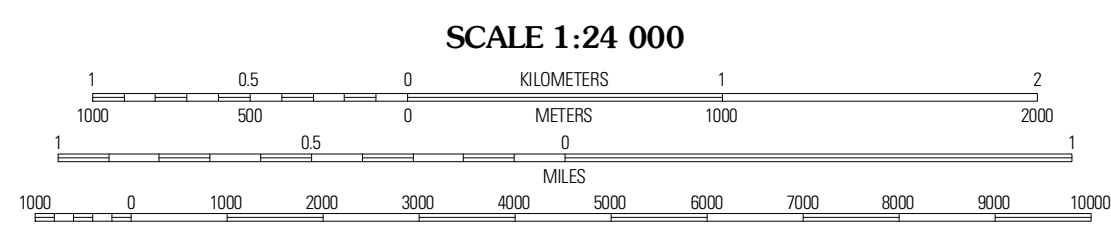
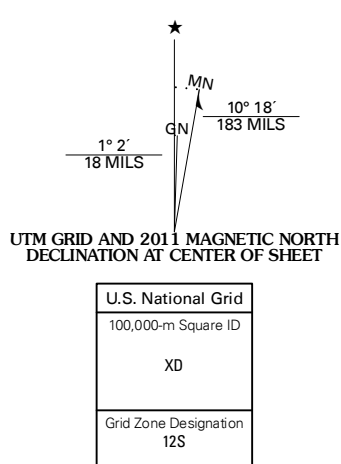


DEEP LAKE QUADRANGLE
ARIZONA-APACHE CO.
7.5-MINUTE SERIES



Produced by the United States Geological Survey
North American Datum of 1983 (NAD83)
World Geodetic System of 1984 (WGS84) Projection and
1 000-meter grid: Universal Transverse Mercator, Zone 12S
10 000-foot ticks: Arizona Coordinate System of 1983 (east zone)

Imagery: NADP, June 2010
Roads: ©2006-2011 TomTom
Names: GNS, 2011
Hydrography: National Hydrography Dataset, 2007
Contours: National Elevation Dataset, 1999
Boundaries: Census, BWC, BIC, USGS, 1972 - 2010



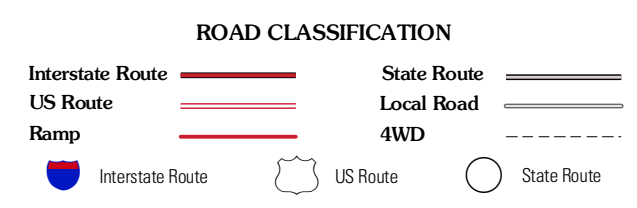
CONTOUR INTERVAL 20 FEET
NORTH AMERICAN VERTICAL DATUM OF 1988
This map was produced to conform with the
National Geospatial Program US Topo Product Standard, 2011.
A metadata file associated with this product is draft version 0.6.1



QUADRANGLE LOCATION

Sanders Well	Tolpat Spring	Chaffin Well
Beacon Well	Deep Lake	High Lowdown Well
Fairchild Well	Wild Cow Lake	Burth Well

ADJOINING 7.5' QUADRANGLES



DEEP LAKE, AZ
2011