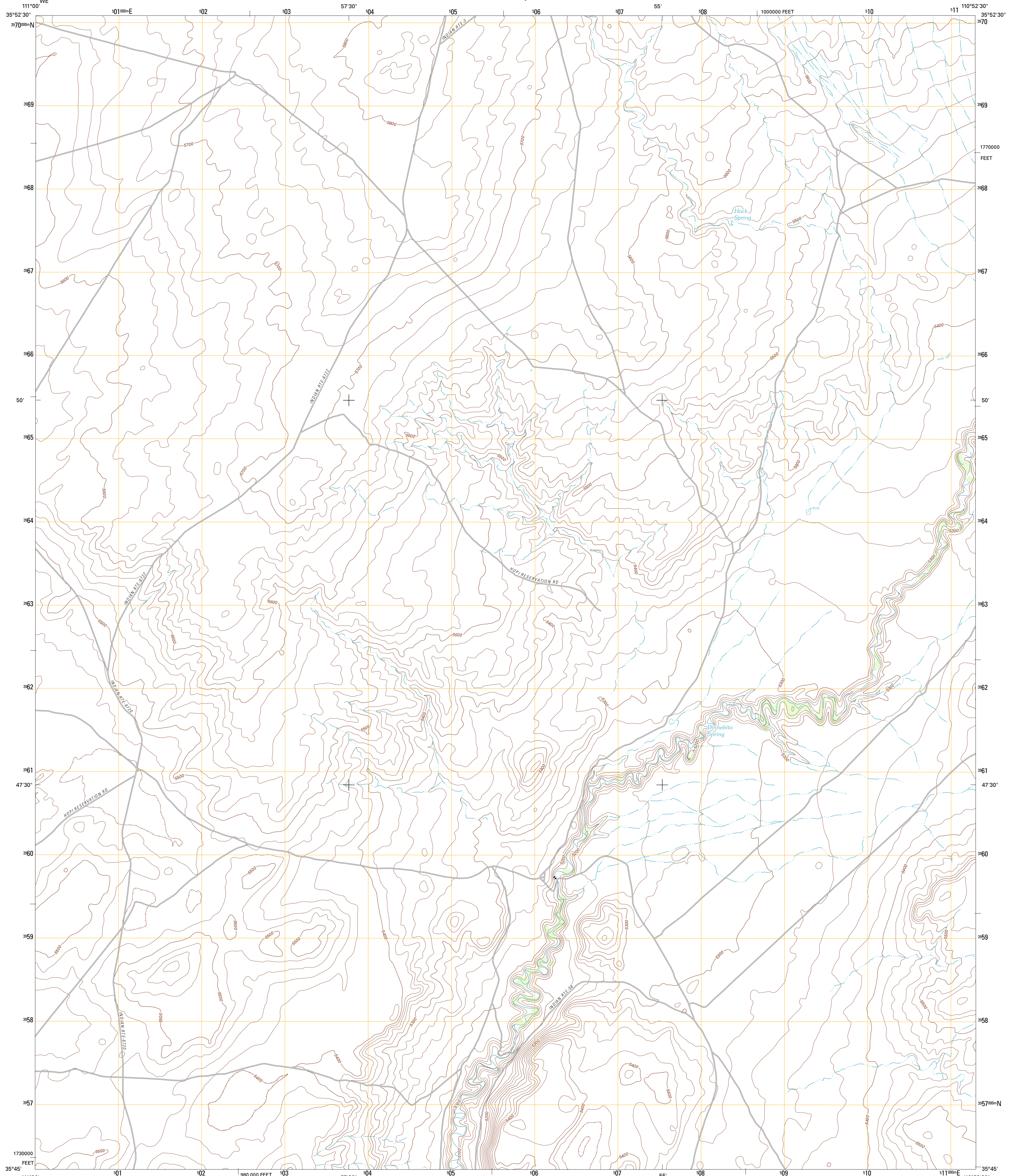




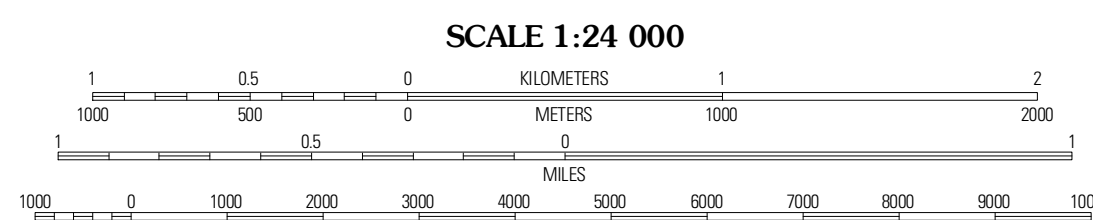
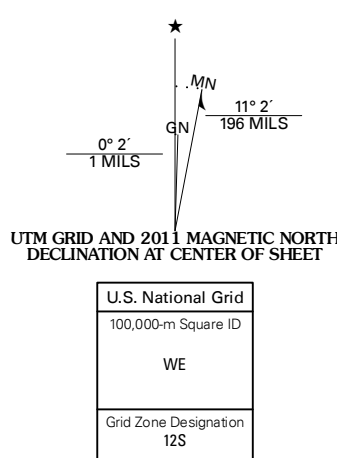
U.S. DEPARTMENT OF THE INTERIOR
U. S. GEOLOGICAL SURVEY



DINNEBITO SPRING QUADRANGLE
ARIZONA-COCONINO CO.
7.5-MINUTE SERIES



Produced by the United States Geological Survey
North American Datum of 1983 (NAD83)
World Geodetic System of 1984 (WGS84). Projection and
1 000-meter grid: Universal Transverse Mercator, Zone 12S
10 000-foot ticks: Arizona Coordinate System of 1983
(central zone)



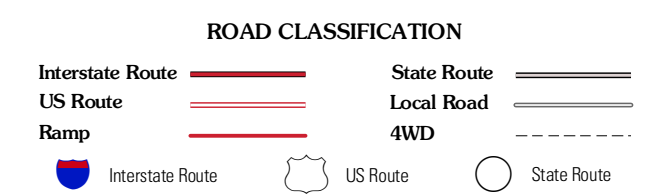
CONTOUR INTERVAL 20 FEET
NORTH AMERICAN VERTICAL DATUM OF 1988

This map was produced to conform with the
National Geospatial Program US Topo Product Standard, 2011.
A metadata file associated with this product is draft version 0.6.1



QUADRANGLE LOCATION

Appaloosa Ridge	Coal Mine Mesa	Howell Mesa
Gold Spring	Dinnebito Spring	Padilla Mesa
Rock Head	Sund Springs	Garcen Meas NE



DINNEBITO SPRING, AZ
2011

ADJOINING 7.5' QUADRANGLES